

Service Manual

LX800-2

LXMT-WX-008



Foreword

There are more and more motorcycles getting onto market with each passing day, and new structure and technologies are also adopted. For all the Loncin users and service workers know well about the maintenance, adjustment and repair for motorcycle LX800-2, we made this service manual and hope which bring you more convenience when you need them.

All the data in this book including diagrams, performance and other data are all the latest until it printed. The Loncin motor.co.ltd. reserves the right for further revision without any notice in advance. Any part in this book belongs to Loncin copyright, any person or company is unable to re-print unless got Loncin writing authorization in advance.

Content list

1. Disassembly, re-assembly and maintenance for engine	1
Engine kit and its parts	1
Removal and re-assembly for engine	2
Filling-up for engine oil	4
Replacement for oil filter	4
2. Disassembly, re-assembly and maintenance for handle bar	6
Handle bar kit and its parts.....	6
Disassembly and re-assembly for handle bar kit.....	7
Removal and re-assembly for left lever kit.....	9
Removal and re-assembly for throttle cable.....	10
3. Disassembly, re-assembly and maintenance for air filter kit	10
Air filter kit and its parts	10
Removal and re-assembly for element of air filter.....	11
Disassembly and re-assembly for air filter kit	12
Removal and re-assembly for throttle valve body	13
Removal and re-assembly for oil rail.....	13
4. Disassembly, re-assembly and maintenance for air exhaust kit	14
Air exhaust kit and its parts	14
Removal and re-assembly of muffler	15
5. Disassembly, re-assembly and maintenance for fuel tank kit	17
Fuel tank kit and its parts	17
Removal for fuel tank kit.....	18
Removal for fuel lock.....	19
Removal for fuel pump.....	19
Removal for fuel sensor.....	20
6. Disassembly, re-assembly and maintenance for fuel evaporation kit	21

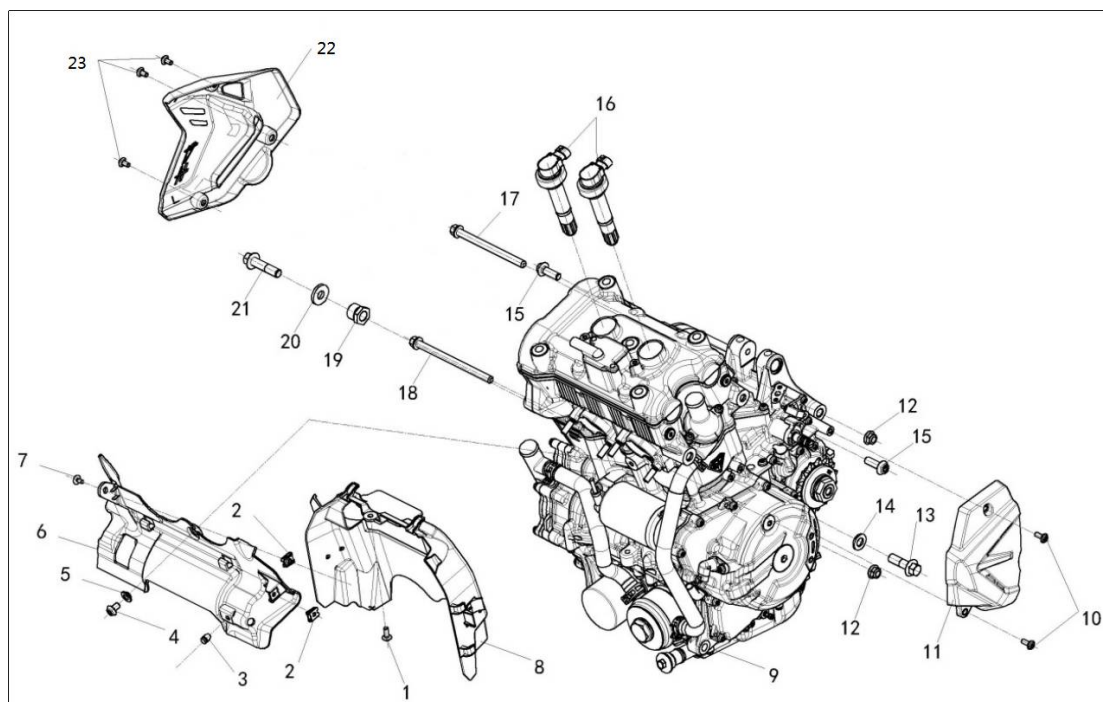
Fuel evaporation control kit and its parts.....	21
Removal for fuel evaporation control kit	22
Diagram for connection of fuel evaporation control kit.....	23
Working principle for fuel control kit:	23
7. Disassembly, re-assembly and maintenance for heat radiation kit.....	24
Heat radiation kit and its parts	24
Inspection for coolant.....	25
Replacement for coolant	25
Coolant filling-up.....	26
8. Disassembly, re-assembly and maintenance for front wheel kit.....	27
Front wheel kit and its parts.....	27
Removal for front wheel.....	28
Removal for brake plate.....	29
Removal for front tire.....	30
Removal for bearing and oil seal of front wheel	30
9. Disassembly, re-assembly and maintenance for front fork kit.....	31
Front fork kit and its parts	31
Disassembly and re-assembly for steering stem.....	33
Disassembly and re-assembly for steering bearing	34
Judge for gap of steering bearing.....	35
10. Disassembly, re-assembly and maintenance for rear wheel kit	36
Rear wheel kit and its parts	36
Removal for rear wheel	37
Removal for damper kit.....	38
Removal for brake plate.....	39
Removal for rear tire	39
Removal for rear wheel bearing and oil seal	40
11. Disassembly, re-assembly and maintenance for rear suspension.....	41

Rear suspension kit and its parts.....	41
Removal for rear shock absorber.....	42
Disassembly and re-assembly for rear fork and chain	43
Disassembly and re-assembly for bearing of rear fork	44
Disassembly and re-assembly for chain slider.....	44
Disassembly and re-assembly for driving sprocket wheel.....	45
Disassembly and re-assembly for damper kit.....	46
Disassembly and re-assembly for damper of rear wheel.....	47
Pre-condition for chain replacement.....	48
Pre-condition for sprocket replacement	48
12. Disassembly, re-assembly and maintenance for brake kit.....	49
Brake kit and its parts.....	49
Replacement for front brake pads.....	50
Replacement for rear brake pads	51
Inspection for brake pads	52
Inspection for liquid level in front and rear brake	52
Replacement for liquid in front brake	52
Replacement for brake liquid in rear brake.....	53
Replacement for parts in ABS, front and rear brake hoses	54
Removal for speed sensor of rear wheel.....	56
Removal for speed sensor of front wheel.....	56
13. Disassembly, re-assembly and maintenance for lights kit.....	58
Headlight and its parts	58
Removal for headlight kit	59
Taillight, rear turning signal, registration plate and their parts	61
Removal for taillight, rear turning signal light and rear registration light.....	62
14. Disassembly, re-assembly and maintenance for main footrest and pillion step kit.....	64
Main footrest, pillion step kit and their parts.....	64
Removal for left and right footrest and step pillion	65

Removal for left and right main footrest	66
Removal for left and right pillion step	66
15. Disassembly, re-assembly and maintenance for side stand, main stand, gearshift and brake pedal.....	67
Side stand, main stand, gearshift pedal, brake pedal and their parts	67
Disassembly and re-assembly for side and main stand.....	68
Disassembly and re-assembly for gearshift pedal.....	69
Disassembly and re-assembly for rear brake pedal	69

1. Disassembly, re-assembly and maintenance for engine

Engine kit and its parts



1	Socket spline bolt	EA	1
2	Clipping nut	EA	2
3	Rubber nail	EA	1
4	Socket hex. flange bolt	EA	1
5	Collar	EA	1
6	Engine shield cover	EA	1
7	Socket spline bolt	EA	1
8	Heat radiator cover	EA	1
9	KE products family	TAI	1
10	Socket spline bolt	EA	2
11	Left decorative cover of engine	EA	1
12	Metallic flange locking nut	EA	2
13	Hex. flange bolt	EA	1
14	Flat washer	EA	1
15	Socket hex. flange bolt	EA	2
16	Ignition coil	EA	2
17	Axle	EA	1
18	Axle	EA	1

19	Threaded sleeve	EA	1
20	Flat washer	EA	1
21	Hex. flange bolt	EA	1
22	Right front side cover	EA	1
23	Socket spline bolt	EA	3

Removal and re-assembly for engine

Keep motorcycle upright by parking stand.

Removal fuel tank kit by referring to its removal content.

Remove heat radiator kit by referring to its removal steps.

Remove muffler kit by referring to its removal steps.

Remove fuel evaporation controller kit by referring to its removal.

Remove air filter and throttle valve by referring to their removal.

Remove gearshift pedal by referring to its removal.

Remove bolt 1 (2 pieces), then remove left rear cover 2.

Remove bolt 3 (2 pieces), then remove bracket 1 for carbon canister.

Remove bolt 5 (3 pieces), then remove right front side cover 6.

Remove bolt 9 and 10, then remove engine shield cover 11.

Remove bolt 7, then remove shield cover 8 for heat radiator.

Remove bolt 12, then remove horn 13.

Cut off solenoid valve and its connection to wire harness.

Loosen connective bolt between solenoid valve to holding piece of electrical parts if it is necessary, remove solenoid valve for replacement.

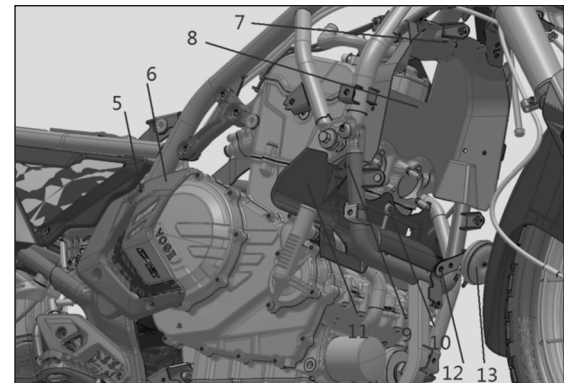
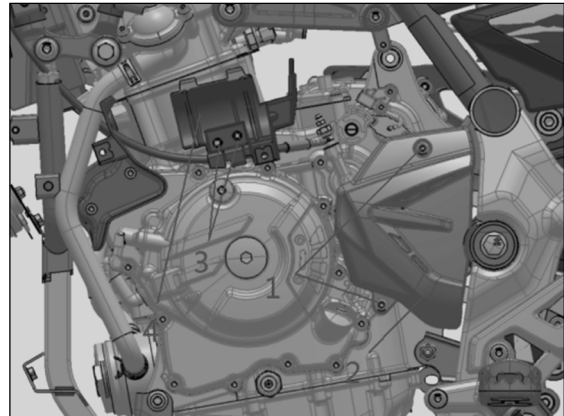
Cut off all wire joints connecting to engine.

Drain off and replace coolant by referring its replacement.

Remove oil tube of hydraulic clutch and its accessories by referring to its disassembly and re-assembly.

Cut off all tubes connecting between engine and cooling kit.

Remove bolt 14 (Left and right), 15 and 17, then remove engine holding bracket 16.



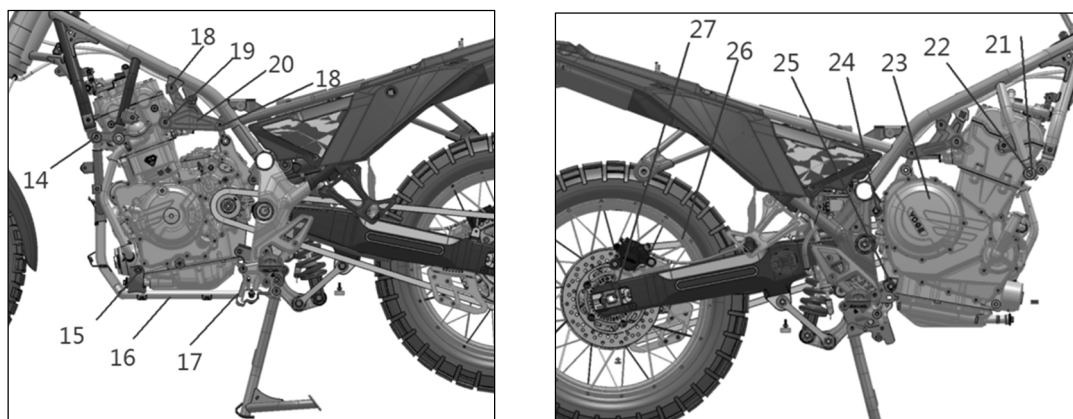
Service Manual for LX800-2

Remove bolt 18 (4 pieces each on left and right) and 19, then remove upper suspension plate (Left and right).

Loosen bolt 27, then loosen chain 26 by referring to its removal and re-assembly.

Remove bolt 21 (Left and right side), 24 and 25, then loosen threaded sleeve 22, finally remove engine 23.

The re-assembly is opposite to disassembly.



Caution:

When removing engine, please adopt the tools for this work to avoid human body injury due to heavy engine.

Important:

Please dispose the drained coolant in environment friendly way.

When re-assembling, filling capacity for coolant please refer to its related chapter.

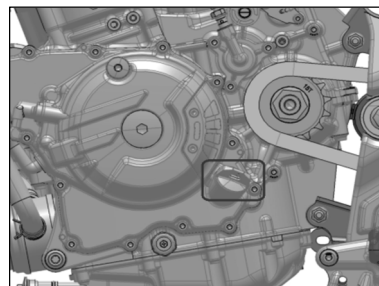
Recover the binding-up of wires to the same condition before removal, and full take water-proof, interference and thermal damage into consideration.

Parameter:

Rear upper fastening bolt of engine	Nm	M10	55
Rear lower fastening bolt for engine	Nm	M10	55
Upper fastening bolt for engine (Left and right)	Nm	M10	45
Front fastening bolt for engine (Left and right)	Nm	M12	80
Fastening bolt for engine suspension plate (Left and right)	Nm	M8	22
Front fastening bolt (Left and right) for engine holder	Nm	M10	55
Middle fastening bolt for engine holder	Nm	M10	45
Rear fastening bolt for engine holder	Nm	M8	22
Locking nut for rear wheel axle	Nm	M20	105
Fastening torque for plastic covering parts	Nm	M8	9
Fastening torque for plastic covering parts	Nm	M6	6
Fastening torque for plastic covering parts	Nm	M5	4.5
Fastening bolt for secondary air intake valve	Nm	M5	2

Filling-up for engine oil

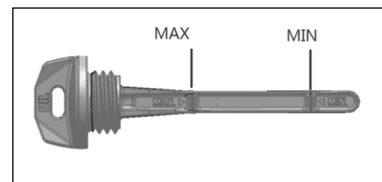
Remove oil gauge on left rear side of engine for oil filling-up.
 Keep motorcycle upright by parking stand.
 Re-assemble oil gauge back.



Start engine, let it idly run until cooling fan working, then idly run for a minute.
 Stop engine, then remove oil gauge, wait for a minute and make sure oil get return.
 Fasten the oil gauge and remove it once again, check if the wet sign is between upper and lower scale lines.
 If the oil level is out of given range, add or drain oil by repeat steps above until oil level is within given range.

Caution:

If oil level is above upper line, please absorb residual oil by tool from filling port.



Important:

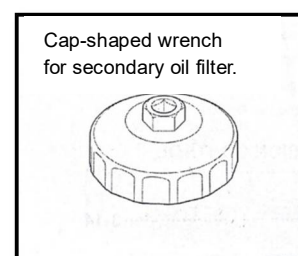
When oil filled up, start engine and let it idly run for 30 seconds, then check oil level once again.
 When checking oil level, please keep motorcycle upright, otherwise the judge for oil level would be wrong.

Parameter:

Engine oil capacity (Without replacing element)	L	2.6
Engine oil capacity (Replace element)	L	2.8
Engine oil capacity (Break down engine)	L	3.2
Oil specification	The engine oil we suggest: Grade 10W/40 SL or above	

Replacement for oil filter

Remove lower fairing cover by referring to removal for air exhaust kit.



Service Manual for LX800-2

Put an oil collection case under oil filter in the front of engine.

Remove oil filter by tool for this work only (As picture below), then drain off oil.

Replace oil filter for a new one and assemble it in place.

Assemble o-ring onto cover of oil filter.

The re-assembly is opposite to disassembly.

Caution:

When working above achieved, please clean up residual greasy dirt on engine and muffler surface by cleanser, then dry them up by compressed air.

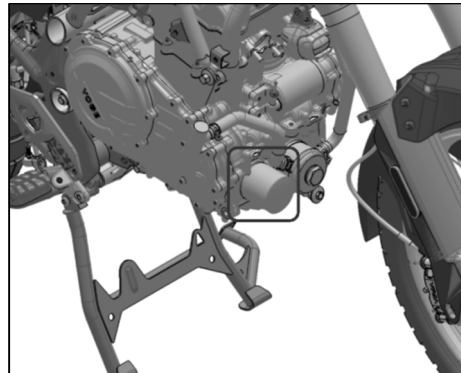
Important:

Dispose the used oil and oil filter by environment friendly way.

Check o-ring for oil filter, please replace if it is necessary.

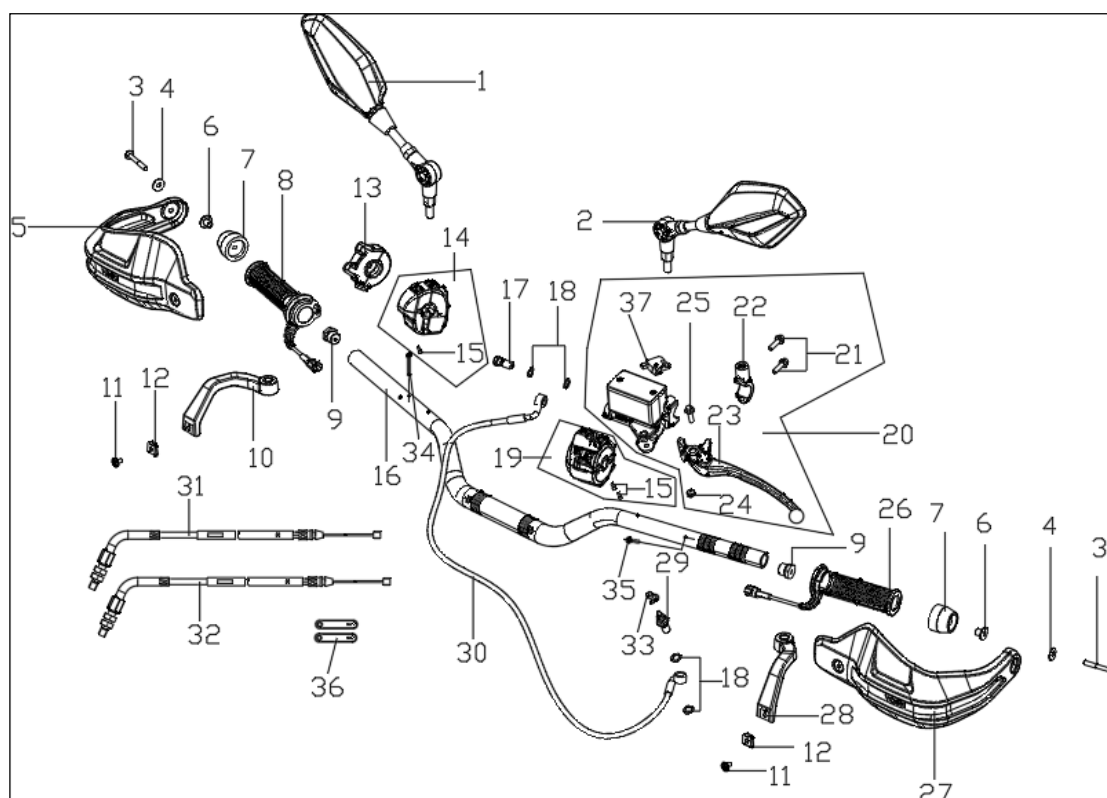
Parameter:

Oil drainage bolt for engine	N.m	22
Bolt for lower fairing cover of engine	N.m	9
Oil filter	N.m	12



2. Disassembly, re-assembly and maintenance for handle bar

Handle bar kit and its parts



1	Right back-view mirror	PCS	1
2	Left back-view mirror	PCS	1
3	Socket spline flange bolt	PCS	2
4	Flat washer	PCS	2
5	Right grip shield	PCS	1
6	Flanging washer	PCS	2
7	Decorative weight	PCS	2
8	Accelerator	PCS	1
9	Balancing weight for handle bar	PCS	2
10	Bracket for grip shield	PCS	1
11	Socket spline bolt	PCS	2
12	Clipping nut	PCS	2
13	Accelerator base	PCS	1

Service Manual for LX800-2

14	Right switch assembly	SET	1
15	Socket hex. screw	PCS	3
16	Handle bar	PCS	1
17	Bolt for brake hose	PCS	1
18	Flat washer	PCS	4
19	Left switch assembly	SET	1
20	Upper pump for hydraulic clutch	PCS	1
21	Hex. flange bolt	PCS	2
22	Lever clip	PCS	1
23	Left lever	PCS	1
24	Hex. flange nut	PCS	1
25	Brake lever bolt	PCS	1
26	Rubber grip	PCS	1
27	Left grip shield	PCS	1
28	Bracket for grip shield	PCS	1
29	Bolt for brake hose	PCS	1
30	Connective oil tube for hydraulic clutch	PCS	1
31	Throttle cable	PCS	1
32	Throttle cable	PCS	1
33	Protective cap for air exhaust screw	PCS	1
34	Cross head sunk screw	PCS	1
35	Cross head sunk head	PCS	1
36	Clamping band	PCS	4
37	Clutch switch	PCS	1

Disassembly and re-assembly for handle bar kit

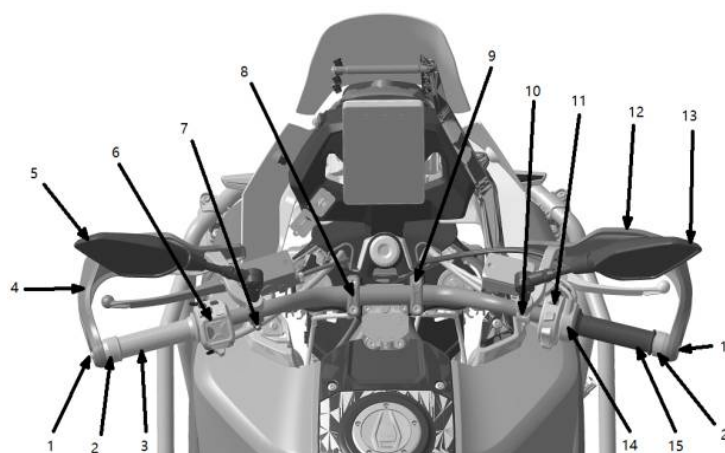
Keep motorcycle upright by parking stand.

Remove back-view mirrors left right of 6 and 14.

Remove 2 pieces of bolt 1, then remove decorative weight 2, then remove left and right side grip shield 4 and 12.

Remove 2 pieces of installation bolt for left switch assy., then remove the switch assy. 6.

Remove 2 pieces of installation for upper pump of hydraulic clutch, then remove the pump 7.



Remove 2 pieces of installation bolt for upper pump of front disc brake, then remove the pump 10.

Remove 2 pieces of installation for right switch assy., then remove the switch assy. 11.

Loosen 2 pieces of nut for throttle valve of its cable. Then remove 1 piece of locking bolt for accelerator, then remove accelerator base 14.

Remove mounting bolt for left heating grip, then remove the grip 3, finally 15.

Remove 4 pieces of bolt 9, then remove handle bar clip 8, then remove the handle bar.

The re-assembly is completely opposite to disassembly.

Caution:

When re-assembling left and right switch assy., please align their positioning pin to its hole on handle bar, then lock up bolt for switch assy.

When removing upper pump of hydraulic clutch, please don't remove bolt beside oil cup, otherwise when assembled, please make air exhaust.

Caution:

When re-assembled, please confirm free play for accelerator turning.

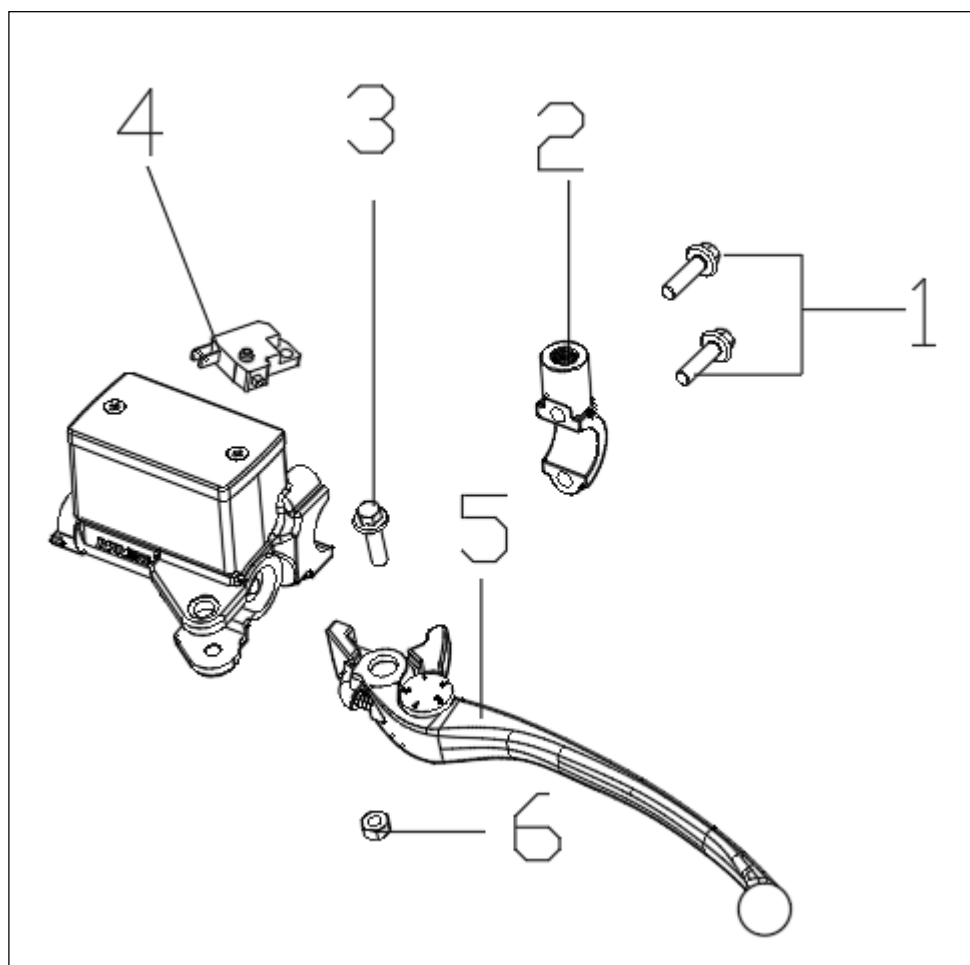
When handle bar re-assembled, please confirm its correct angle, please turn the handle bar to left and right limit and check if there is touching between handle bar, cables, fuel tank and surrounding parts, please adjust if it is necessary, otherwise it may be bad for safety.

When back-view mirror re-assembled, please adjust once again the angle for back-view mirror to confirm its correct viewing range and safety.

Parameters:

Torque for handle bar clip	Nm	M8	18
Torque for upper pump of hydraulic clutch	Nm	M6	9
Torque for handle bar decorative weight	Nm	M6	9
Torque for balancing weight of handle bar	Nm	M16	25
Torque for back-view mirrors	Nm	M10	25
Fastening torque for left and right switch assembly	Nm	M5	1.5
Upper nut for throttle valve on its cable	Nm	M6	9
Lower nut for throttle valve on its cable	Nm	M6	9

Removal and re-assembly for left lever kit



1	Hex. flange bolt	PCS	2
2	Lever clip	PCS	1
3	Left lever	PCS	1
4	Bolt for disc brake lever	PCS	1
5	Clutch switch	PCS	1

Remove nut 6 by tool.

Remove bolt 3.

Remove lever bar 5 for left lever.

Important:

When re-assembling left lever, please coat each turning surface with lithium lubricant.

When re-assembled clutch switch, please repeatedly confirm its correction assembly, meanwhile confirming its normal work on motorcycle.

Removal and re-assembly for throttle cable

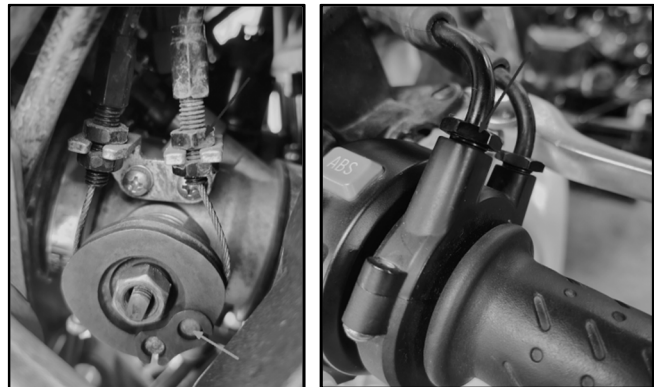
Remove fuel tank by referring to its removal details.

Loosen nut, turn cable plate and remove lower end of 2 throttle cables.

Remove accelerator base kit from handle bar, then remove upper end of 2 throttle cables, finally completely remove the cables.

Replace throttle cable for new ones with same specification.

The re-assembly is completely opposite to disassembly.



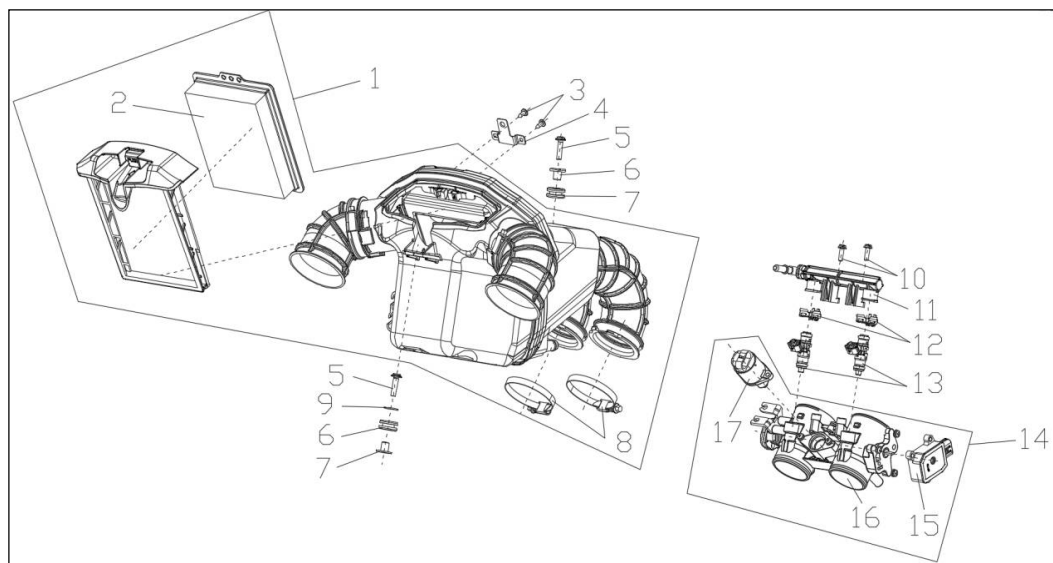
Caution:

When re-assembling throttle cable, please pay attention to its wiring and keep same condition before removing, otherwise there throttle returning may be bad.

When re-assembled, please repeatedly turn the accelerator to confirm its correct re-assembly and if there is jamming or returning failure.

3. Disassembly, re-assembly and maintenance for air filter kit

Air filter kit and its parts



1	Air filter	SET	1
2	Element kit for air filter	EA	1
3	Self-tapping screw of cross head	EA	2
4	Oil hose bracket	EA	1
5	Socket spline bolt	EA	2
6	Flanging washer	EA	2
7	I-ring	EA	2
8	Clamp kit	EA	2
9	Flat washer	EA	1
10	Socket spline bolt	EA	2
11	Oil rail	EA	1
12	Clamp for oil injector	EA	2
13	Oil injector	EA	2
14	Throttle valve body kit	EA	1
15	Sensor	EA	1
16	Throttle valve body	EA	1
17	Idling control valve	EA	1

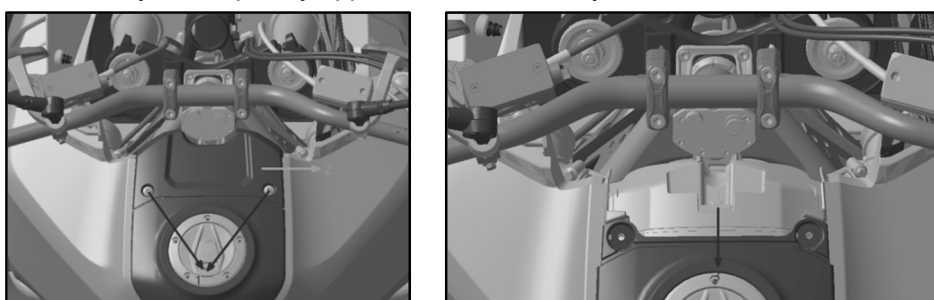
Removal and re-assembly for element of air filter

Keep motorcycle upright by parking stand.

Remove mounting bolt 1 by socket hex. wrench (T25), then remove front decorative cover 2 of fuel tank.

Press clip 3 of element by hand, then pull it out upwards, then the element could be removed.

The re-assembly is completely opposite to disassembly.



Important:

When element re-assembled, please repeatedly confirm correct re-assembly for seal rings, otherwise the poor sealing of element may get dust into engine and bad for engine service life.

If there is damage on element, please replace.

If there is greasy dirt on element, please replace.

If element is wet, please replace.

Please dispose the replaced element in environment friendly way.

Parameters:

Mounting bolt 1	M5	Nm	4.5
-----------------	----	----	-----

Disassembly and re-assembly for air filter kit

Keep motorcycle upright by parking stand.

Please refer to disassembly for fuel tank kit.

Remove mounting bolt 1 by socket hex. wrench (T30).

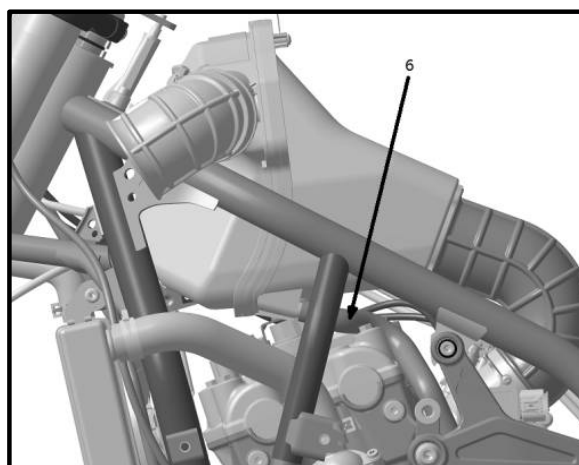
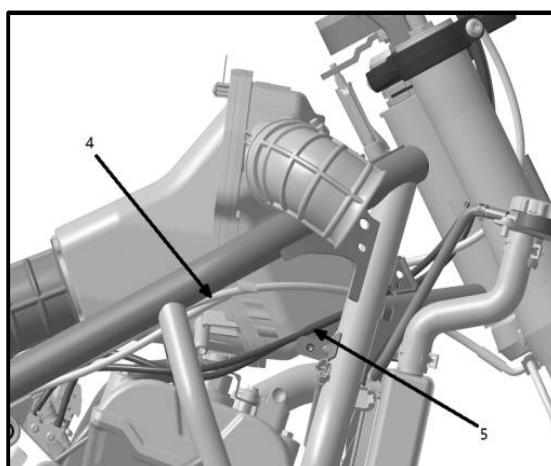
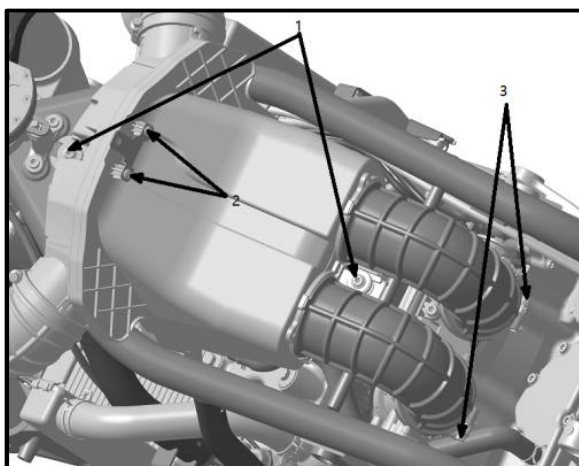
Remove self-tapping screw 2 by cross head screwdriver.

Loosen bolt 3 for clamp kit by screwdriver.

Remove brake oil hose 4 on the right side of air filter, then remove throttle cable 5.

Pull out breathing tube 6 on the left side of air filter by hand.

The re-assembly is completely opposite to disassembly.



Parameters:

Mounting bolt 1	M6	Nm	4.5
Cross self-tapping screw 2	ST4.2	Nm	1.5
Clamp bolt 3	M6	Nm	4.5

Removal and re-assembly for throttle valve body

Remove connector 1 and 2 from throttle valve body, pull off oil hose 3 and breathing tube kit 4 , then remove throttle cable.

Remove clamp kit bolt 5 by tool.

Powerfully pull out throttle valve kit.

The re-assembly is completely opposite to disassembly.

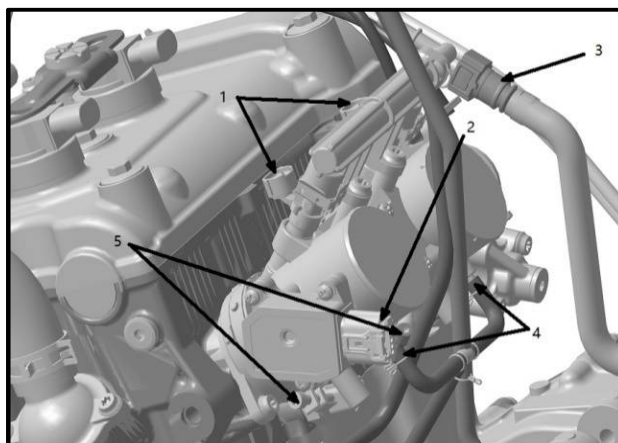
Important:

When throttle valve re-assembled, please repeatedly confirm correct assembly for sealing piece between air filter case and throttle valve body, otherwise the poor sealing may let dust get into engine and damage engine.

Before re-assembly, please clean up throttle valve kit by cleanser and dry it up by blowing, which ensures engine performance.

Parameters:

Clamp kit bolt 5	M5	Nm	4.5
------------------	----	----	-----



Removal and re-assembly for oil rail

Remove connective bolt 1 between oil rail and throttle valve body by tool.

Powerfully pull out oil rail kit and finally remove it.

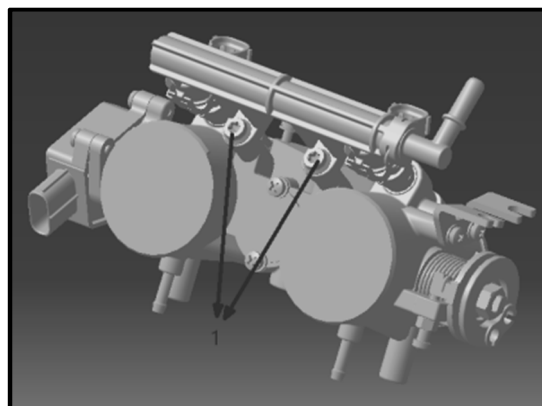
The re-assembly is opposite to disassembly.

Important:

When re-assembling oil rail, please pay attention to damage, distortion and correct re-assembly of o-ring on oil injector, otherwise poor sealing make lead to abnormal combustion.

When re-assembling oil rail and injector, make sure its positioning clip 2 is with the same condition before removal.

Before re-assembling, please clean up oil injector by cleanser and dry it up by blowing for nice engine performance.

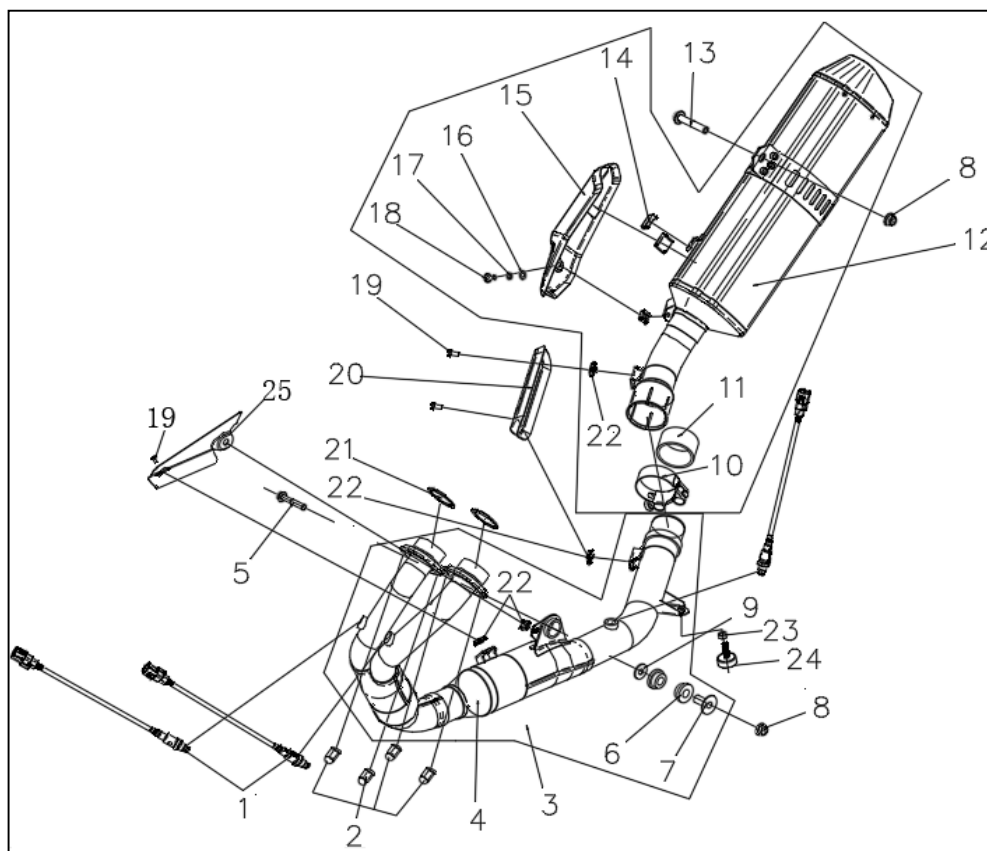


Parameters:

Torque for bolt connecting oil rail and throttle valve body	M6	Nm	6
---	----	----	---

4. Disassembly, re-assembly and maintenance for air exhaust kit

Air exhaust kit and its parts



1	Oxygen sensor	PCS	3
2	Cap-shaped nut	PCS	4
3	Front part of muffler exhaust	PCS	1
4	Front part of muffler	PCS	1
5	Socket spline flange bolt	PCS	1
6	T-ring	PCS	2
7	Flanging washer	PCS	2
8	Hex. flange bolt	PCS	1

Service Manual for LX800-2

9	Flat washer	PCS	1
10	Muffler connective sleeve	PCS	1
11	Graphite ring	PCS	1
12	Rear part of muffler	PCS	1
13	Socket hex. flange bolt	PCS	1
14	Heat gasket	PCS	2
15	Decorative plate	PCS	1
16	Flat washer	PCS	1
17	Elastic washer	PCS	1
18	Socket spline bolt	PCS	1
19	Socket spline bolt	PCS	4
20	Hot proof plate	PCS	1
21	Exhaust port gasket	PCS	2
22	Clipping nut	PCS	5
23	Hex. nut	PCS	1
24	Damping gasket	PCS	1
25	Exhaust pipe shield	PCS	1
26	Metallic locking nut	PCS	1

Removal and re-assembly of muffler

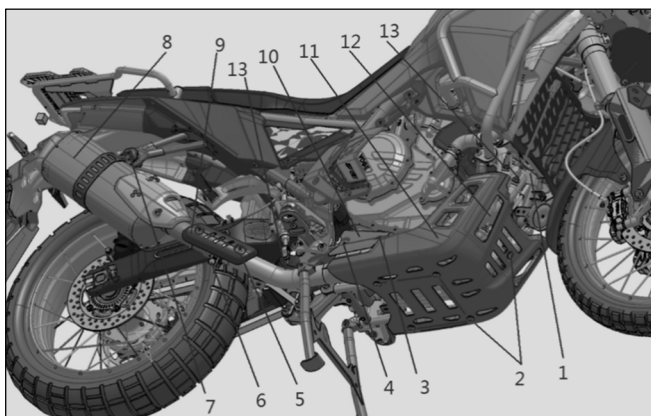
Keep motorcycle upright by parking stand.

Remove bolt 2 (5 pieces), then remove lower fairing cover 11.

Remove bolt 5 (2 pieces), then remove hot proof plate 9.

Remove bolt 7 and loosen bolt 6 for connective sleeve of muffler, then remove rear part 8 of muffler.

Remove graphite ring in rear part of muffler, please check if the ring damaged, otherwise it is unnecessary to be removed.



Remove wire joint (3 places) between oxygen sensor 13 and wire harness, then remove clamping bad for oxygen sensor 13.

Remove bolt 3 and 4, then the hot proof plate 10.

Remove nut 1 (4 pieces) at air exhaust port, then remove front part 12 of muffler.

Remove gasket for air exhaust port.

Remove oxygen sensor 13 (3 pieces) by tool.

The re-assembly is completely opposite to disassembly.

Caution:

If the graphite ring is fine without damage, please don't remove it, because it connects front and rear parts of muffler, removal may get it damaged.

Important:

Before re-assembling, please check if there is damage on graphite ring, if it damaged, the sealing performance may go bad, please replace.

The gasket for air exhaust port needs be replaced before re-assembling front part of muffler, otherwise the used gasket may lead to poor sealing even air leakage.

When re-assembling front part of muffler, please fasten nut at air exhaust port, then fasten mounting bolt behind.

Remove muffler when it completely cooled down to avoid scaled.

There is steel wire in graphite ring, please don't hurt hand when replacing it.

When re-assembled, please start motorcycle to check sealing performance for sealing pieces and their places.

Please dispose replaced graphite ring in environment friendly way.

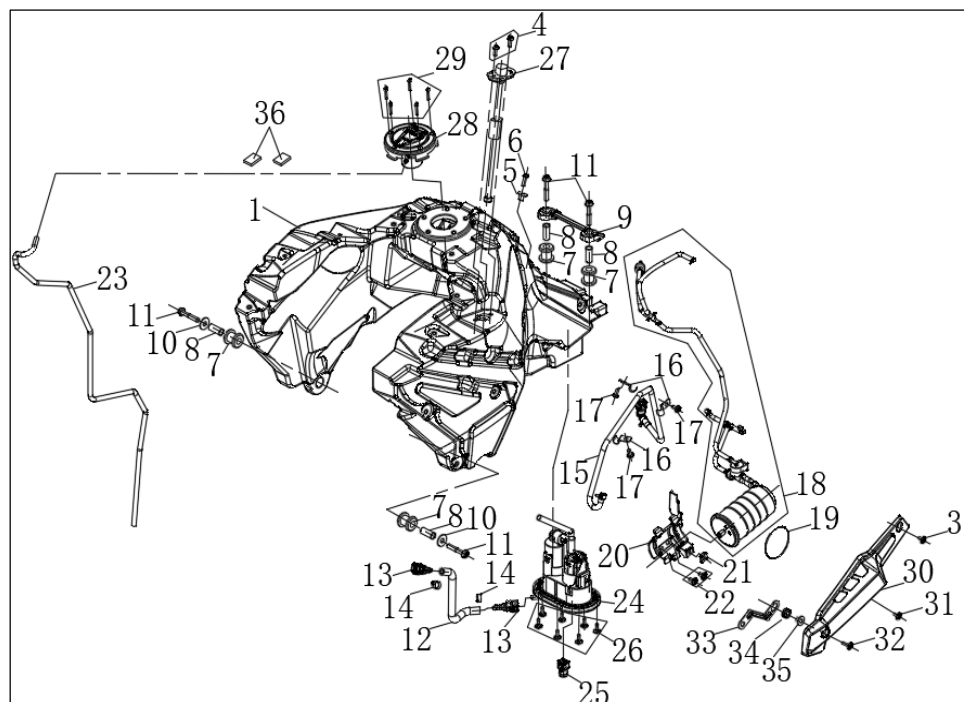
When re-assembling, please confirm the connecting place between oxygen sensor and wire harness are the same before removing, wrong connection may get engine or motorcycle in malfunction.

Parameters:

Connective bolt for rear part of muffler	M10	Nm	45
Bolt for connective sleeve of muffler	M10	Nm	22
Connective bolt for front part of muffler	M8	Nm	22
Nut for air exhaust port of front muffler part	M8	Nm	16
Oxygen sensor fastening	M12	Nm	18
Bolt for lower fairing cover	M6	Nm	9
Bolt for hot-proof plate	M6	Nm	9

5. Disassembly, re-assembly and maintenance for fuel tank kit

Fuel tank kit and its parts



1	Fuel tank	PCS	1
2	Socket spline bolt	PCS	2
3	Flanging washer	PCS	1
4	Socket spline bolt	PCS	1
5	I-ring	PCS	4
6	Collar	PCS	4
7	Bracket for fuel tank protective plate	PCS	1
8	Flat washer	PCS	2
9	Socket hex. flange bolt	PCS	4
10	Oil hose	PCS	1
11	Fast changing joint	PCS	2
12	Hose clamp	PCS	2
13	Fuel hose kit	PCS	1
14	Wire clip	PCS	3
15	Socket spline bolt	PCS	3
16	Fuel evaporation control kit	SET	1
17	Seal ring	PCS	1

18	Bracket for carbon canister	PCS	1
19	Clipping nut	PCS	1
20	Socket spline bolt	PCS	2
21	Water hose	PCS	1
22	Electric fuel pump	PCS	1
23	Fast changing joint	PCS	1
24	Socket spline bolt	PCS	7
25	Fuel sensor	PCS	1
26	Fuel tank lock	PCS	1
27	Socket hex. screw	PCS	5
28	Decorative strip for side strip	PCS	1
29	Socket spline bolt	PCS	2
30	Socket spline bolt	PCS	1
31	Bracket 2 for engine shield	PCS	1
32	I-ring	PCS	1
33	Collar	PCS	1

Removal for fuel tank kit

Keep motorcycle upright by parking stand.

Remove passenger seat 1 by key, then loose mounting bolt for driver seat, then remove driver seat 2.

Loosen bolt, remove decorative cover 3 for fuel tank and front cover 4 for fuel tank.

Loosen bolt, then remove windshield glass 5.

Loosen bolt, then remove left wind plate 6 and right plate 7.

Loosen bolt, remove fog light 8 and 9.

Loosen bolt, bumper bar 10 and 11.

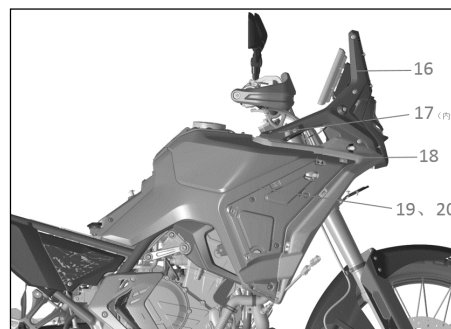
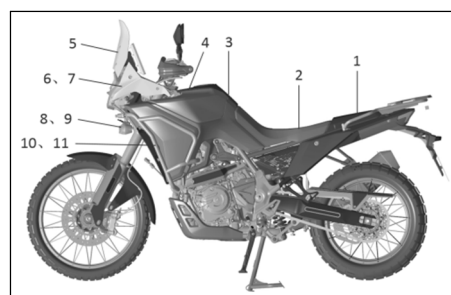
Loosen bolt, remove left wind plate 12 and right plate 13.

Loosen bolt, then remove decorative cover 14 of heat radiator.

Loosen bolt, remove left and right decorative cover 15 for fuel tank.

Loosen bolt, remove left and right protective plate 16, then the left and right inner plate 17 for fuel tank at same time.

Loosen bolt, remove left and right decorative cover kit 19 and 20 for fuel tank.



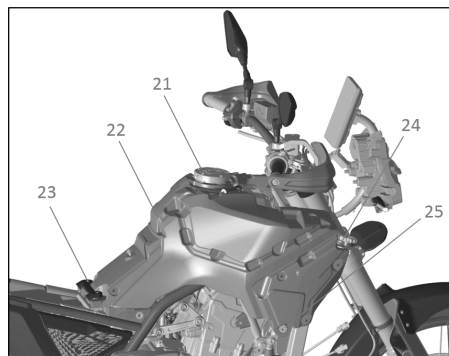
Loosen bolt, then remove inner plate 18 for left and right side strip.

Loosen bolt 23 and 25, then loosen bolt 24, cut off installation between water filling port and fuel tank.

Suitably lift up fuel tank apart from motorcycle, then remove joint for fuel hose and pump at bottom of fuel tank.

Remove overflow hose of fuel lock at top of tank, then remove fuel evaporation hose, fuel sensor, wire joint, finally the fuel tank kit 22.

The re-assembly is completely opposite to disassembly.



Caution:

Because there are so many connectors at bottom side of fuel tank, please re-assemble them all in place and avoid hoses pressed or compressed.

Important:

When re-assembling, opposite assembly for overflow and evaporation hoses is not allowed, otherwise it may damage fuel evaporation kit.

Parameters:

Mounting bolt for covering parts	M5	N.m	4.5
Mounting bolt for covering parts	M6	N.m	6
Mounting bolt for windshield glass	M5	N.m	2
Mounting bolt for fuel tank	M8	N.m	22

Removal for fuel lock

Remove 5 pieces of mounting bolt for fuel lock, then fuel lock 21 is removeable.

The re-assembly is completely opposite to disassembly.

Caution:

When fuel lock re-assembled, please repeated confirm its unlocking.

Parameters:

Fastening bolt for fuel lock	M5	N.m	4.5
------------------------------	----	-----	-----

Removal for fuel pump

Drain off residual fuel from fuel tank.

Remove fuel tank kit and put it upside down.

Remove 8 pieces of mounting bolt for fuel pump.

Remove fuel pump.

The re-assembly is completely opposite to disassembly.

Caution:

When removing fuel pump, please pay attention to cleanliness to filtering screen, wash it if necessary, please wash in clean fuel and repeatedly wash it.

Caution:

When re-assembling fuel pump, please replace its gasket for a new one, otherwise there may have fuel leakage.

When fuel pump re-assembled, please check sealing performance, which needs pressure measurement equipment for this work.

Dispose the replaced gasket of fuel pump in environment friendly way.

Parameters:

Mounting torque for fuel pump bolt	M5	N.m	6
Static pressure for fuel tank		kp	130

Removal for fuel sensor

Drain off residual fuel from tank first.

Remove 2 pieces of nut for fuel sensor.

Remove fuel sensor.

The re-assembly is completely opposite to disassembly.

Important:

When re-assembling fuel sensor, please replace its gasket for a new one, otherwise there may have fuel leakage.

When fuel sensor re-assembled, please check sealing performance, which needs pressure measurement equipment for this work.

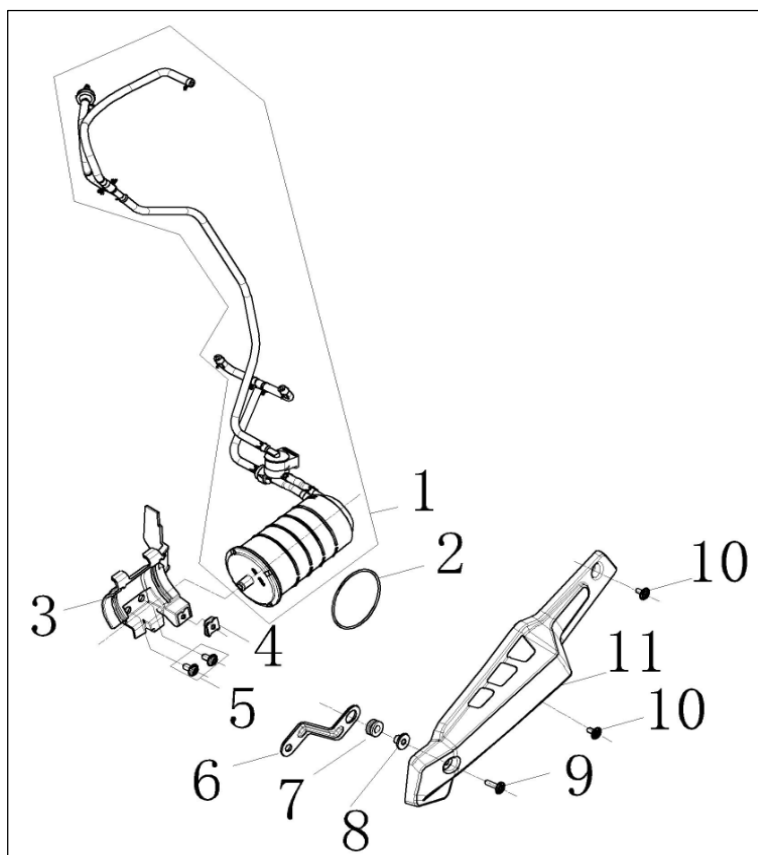
Dispose the replaced gasket of fuel sensor in environment friendly way.

Parameters:

Torque for fuel sensor nut	M6	N.m	9
Static pressure for fuel tank		kp	130

6. Disassembly, re-assembly and maintenance for fuel evaporation kit

Fuel evaporation control kit and its parts



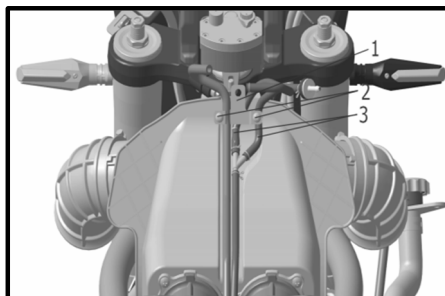
1	Fuel evaporation control kit	EA	1
2	Seal ring	EA	1
3	Bracket for carbon canister	EA	1
4	Clipping nut	EA	1
5	Socket spline bolt	EA	2
6	Bracket 2 for engine shield	EA	1
7	I-ring	EA	1
8	Collar	EA	1
9	Socket spline bolt	EA	1
10	Socket spline bolt	EA	2
11	Decorative strip for side strip	EA	1

Removal for fuel evaporation control kit

Remove fuel tank kit by referring to its removal.

Remove 2 pieces of self-tapping screw 2, then remove bracket 1.

Remove breathing tube 3 for fuel evaporation control kit.

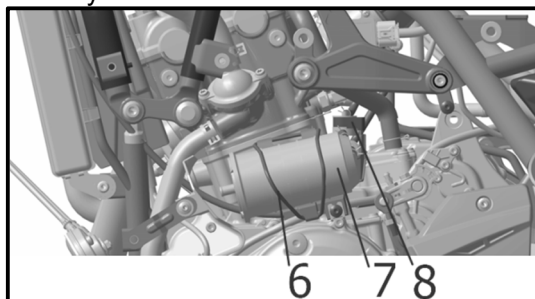
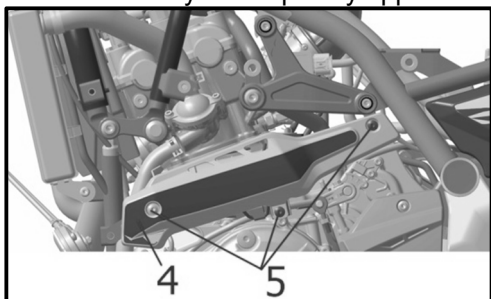


Remove 3 pieces of bolt 5, then remove decorative strip 4 for side strip.

Remove o-ring 6, then remove dumping valve 8 for evaporation control kit from bracket of carbon canister.

Cut off beathing hose connecting throttle valve, then remove evaporation control kit 7.

The re-assembly is completely opposite to disassembly.



Caution:

Please mark up layout and wiring for all hoses before removing for a correct re-assembly due to narrow space and too many hoses of this kit.

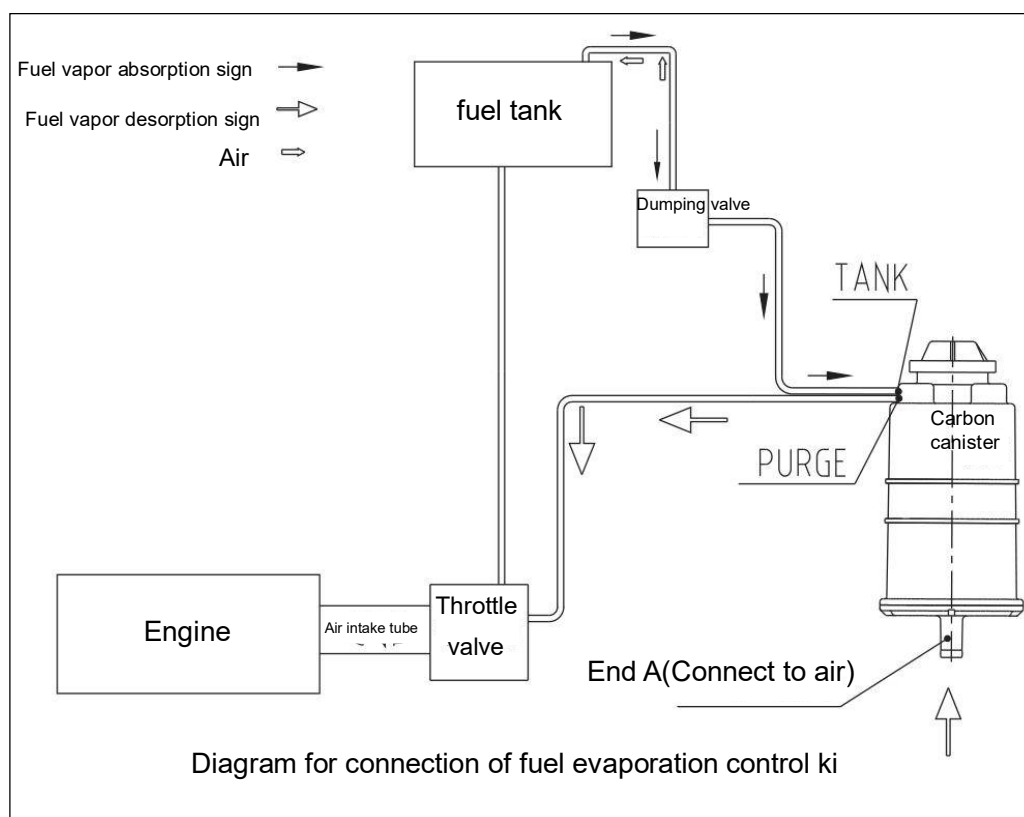
Caution:

When re-assembling control kit, please pay attention to layout of dumping valve, make sure it keeps horizontal to ground when it re-assembled, otherwise it may not work.

Parameters:

Fastening torque for bolt for decorative strip for side strip	M6	Nm	6
Fastening torque for self-tapping screw	ST 4.2	Nm	1

Diagram for connection of fuel evaporation control kit

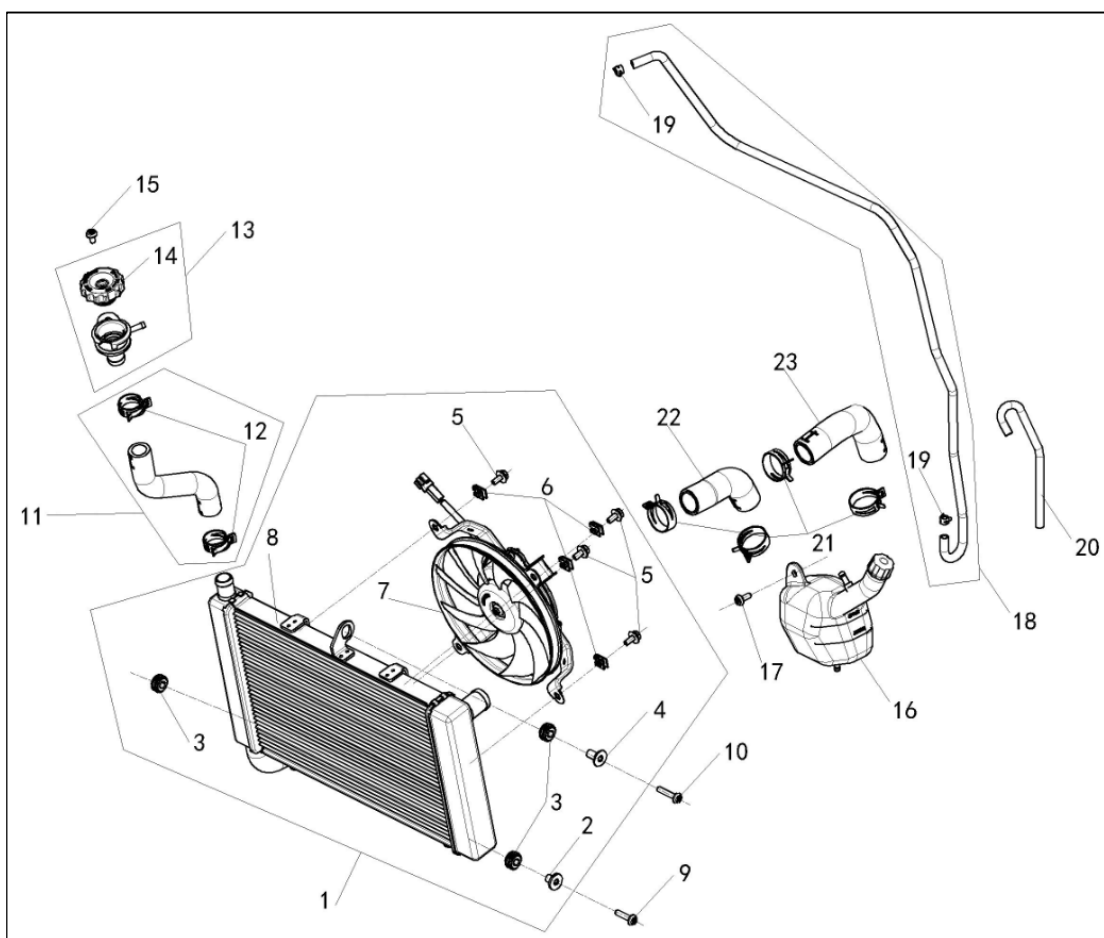


Working principle for fuel control kit:

- (1) When gasoline in tank heated up, its vapor runs out, get end TANK of carbon canister through dumping valve, then absorbed by it.
- (2) When motorcycle inclined over 60° , the dumping valve closed off, the gasoline could not reach canister through dumping valve.
- (3) The fresh air get into end PURGE from end of air through canister, then bring fuel vapor into throttle valve, finally reaches engine for combustion.
- (4) When fuel level falls in fuel tank (Negative pressure from internal tank), it supplement air into tank through one-way valve, then keep same pressure on fuel surface to air outside.

7. Disassembly, re-assembly and maintenance for heat radiation kit

Heat radiation kit and its parts



1	Heat radiator kit	SET	1
2	Flanging washer	EA	1
3	l-ring	EA	3
4	Collar	EA	1
5	Bolt or screw and flat washer kit	EA	4
6	Clipping nut	EA	4
7	Cooling fan kit	EA	1
8	Heat radiator kit	EA	1

9	Socket spline bolt	EA	1
10	Socket spline bolt	EA	1
11	Water hose	EA	1
12	Hose clamp	EA	2
13	Water filling port	EA	1
14	Filling port cover	EA	1
15	Socket spline bolt	EA	1
16	Cooling tank	EA	1
17	Socket spline bolt	EA	2
18	Water hose	EA	1
19	Hose clamp	EA	2
20	Water hose	EA	1
21	Hose clamp	EA	4
22	Water hose	EA	1
23	Water hose	EA	1

Inspection for coolant

Keep motorcycle upright by parking stand.

Observe compensation pot on left and lower side of engine, the coolant level shall be within upper and lower mark, if it is under lower mark, please fill it up but lower than upper scale.

Replacement for coolant

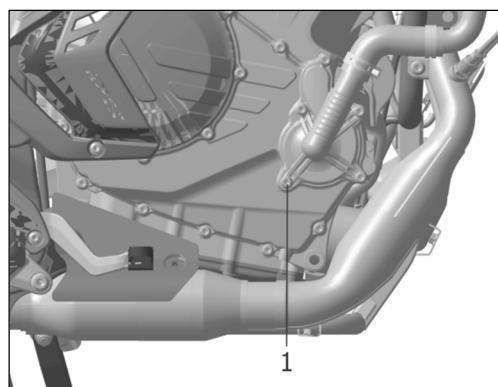
Keep motorcycle upright by parking stand.

Remove lower fairing cover by referring to removal of air exhaust kit.

Remove filling cover on the right or heat radiator.

Lay liquid tray under drainage bolt 1 on right side of engine.

Remove drainage bolt 1 by tool, drain off coolant in engine water passage until it's done.



Important:

Collect the drained coolant by suitable container, then dispose it in environment friendly way.。

When re-assembly, please replace gasket of drainage bolt for a new one.

Please clean up mounting surface for gasket of drainage bolt to avoid impurities on it.

When drainage bolt assembled, please wipe up residual coolant on muffler and engine by dry cloth.

When replacement finished, please start engine and suitably run it in high rotation to check coolant leakage on its lines.

Parameters:

Coolant drainage bolt	M6	N.m	6
Coolant capacity		L	1.8
Coolant specification	With ethanol without silicate in it		G40

Coolant filling-up

Put a funnel at port of heat radiator, fill it up with coolant until it gets full.

Start engine and let it idly run, check filling port of heat radiator, at this moment the liquid level at filling port may fall, then keep filling until level stopped falling.

Assemble filling cap.

Fill compensation pot with coolant by funnel through its port and confirm its level is within upper and lower marks.

Re-assemble rubber cap back to port of compensation pot.

Finish filling-up of coolant.

Important:

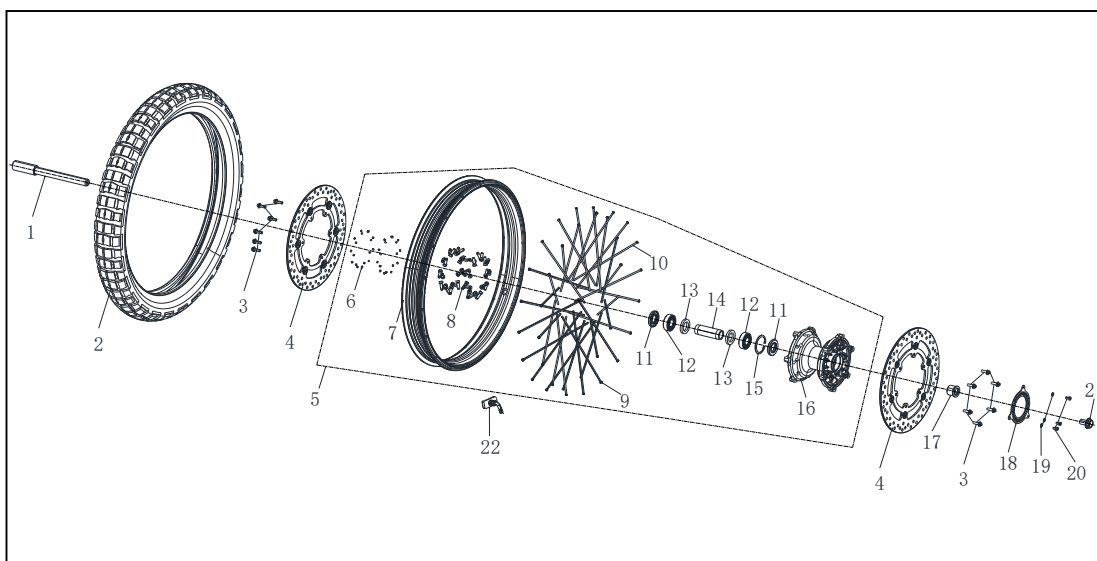
When replacement finished, please start engine and let it in suitable high rotation to check leakage on its lines.。

Caution:

When the working above finished, please wash engine surface by cleanser, then dry up by compressed air.

8. Disassembly, re-assembly and maintenance for front wheel kit

Front wheel kit and its parts



1	Axle	PCS	1
2	Tire	PCS	1
3	Hex. flange bolt	PCS	12
4	Front brake plate	PCS	2
5	Front wheel	PCS	1
6	Bolt of plug	PCS	36
7	Front wheel rim	PCS	1
8	Spoke and nut of front wheel	PCS	36
9	Outer spoke of front wheel	PCS	18
10	Inner spoke of front wheel	PCS	18
11	Oil seal	PCS	2
12	Bearing	PCS	2
13	Flat washer	PCS	2
14	Collar	PCS	1
15	Elastic circlip	PCS	1
16	Front wheel hub	PCS	1
17	Collar	PCS	1
18	ABS gear ring	PCS	1
19	Flat washer	PCS	3

Service Manual for LX800-2

20	Socket hex. screw	PCS	3
21	Hex. flange bolt	PCS	1
22	Tire pressure sensor	PCS	1

Removal for front wheel

Keep motorcycle upright by parking stand.

Remove 4 pieces of bolt 1, then remove 2 pieces of lower brake pump 2 of front disc brake.

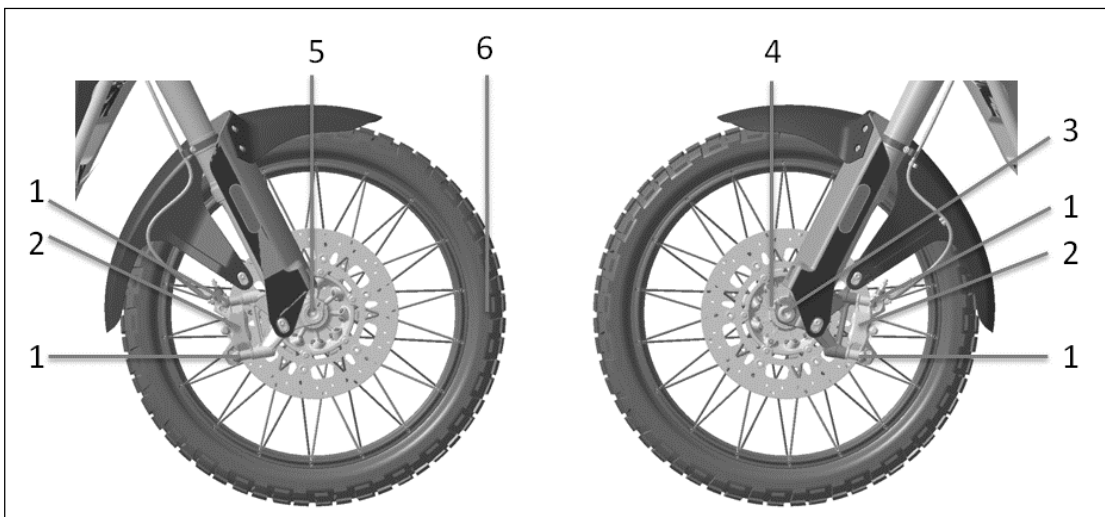
Loosen bolt 3.

Loosen 4 pieces of bolt 4.

Remove bolt 3, remove front wheel axle 5 and the wheel 6.

The re-assembly is completely opposite to disassembly.

Caution:



When front caliper was removed, please don't operate brake lever, otherwise the moving piston may lead to hard re-assembly for caliper.

When caliper re-assembled, please recover the fixture way of brake hose to the same with condition before removal.

Important:

When re-assembling, there shouldn't have dirt on working surface of brake plate.

When replaced, please repeatedly and rightly hold front lever to confirm its normal work.

When tire assembled, please confirm moving balance of front wheel on its equipment.

When assembling collar or oil seal of front wheel, please coat them with lithium lubricant.

Parameter:

Front wheel	/	Spoke or aluminum rim	M1.85X21
Front tire	/	Tubeless tire	90/90-21

End surface runout of front wheel shall not be higher than	/	mm	2
Radial runout shall not be higher than	/	mm	2
Locking bolt on front shock absorber for wheel axle	M8	Nm	18
Torque for front wheel	M14	Nm	60
Torque for front caliper	M10	Nm	45
Torque for brake plate	M6	Nm	14
Loctite	Loctite 262	ml	10
Lubricant	/	g	10
Front wheel allowed imbalance	/	g	5
Air pressure in tire		KPa	220

Removal for brake plate

Remove front wheel and put it onto working bench.

Remove fastening bolt for brake plate, then remove the plate.

The re-assembly is completely opposite to disassembly.

Caution:

There is Loctite on screw of front brake plate, so please adopt the tools meet specification, otherwise it would be difficult for removing.

Important:

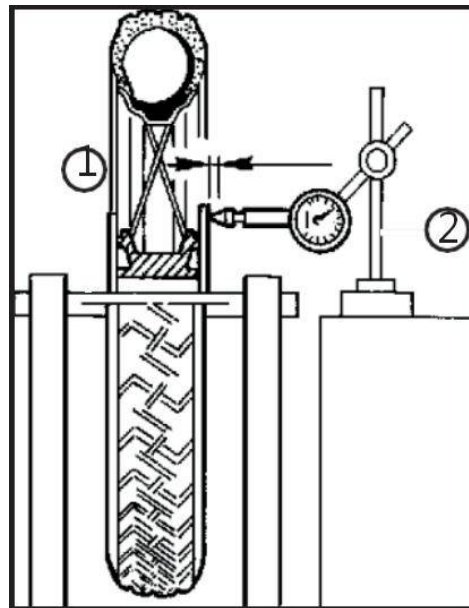
Please pay attention there should not be dirt on brake plate when re-assembling.

When re-assembling brake plate, its fastening bolt shall be coated with Loctite.

When brake plate re-assembled, please confirm the runout of end surface once again, whose method is shown as picture:

Put front wheel onto balancing rack by balancing shaft ①.

Measure runout of runout of end surface by its measuring device ②.



Runout of end surface shall be not higher than	mm	0.3
--	----	-----

Removal for front tire

When front wheel removed, please put it onto working bench.

Eject air valve core of tire pressure sensor inwards to exhaust all the air in tire.

Remove front tire by the tools for this work only.

Remove tire pressure sensor.

The re-assembly is completely opposite to disassembly.

Caution:

Please re-assemble the tire by the tools for this work only, forcedly re-assembly may lead to permanent damage on tire.

Caution:

When re-assembling tire, please align the light point of tire to air valve core on wheel hub, which is easy for following of moving balance.

Removal for bearing and oil seal of front wheel

Remove front wheel kit, then put it onto working bench.

Remove brake plate and tire.

Remove oil seal, elastic circlip, bearing and flat washer of front wheel by snap ring pliers in turn.

Replace bearing and oil seal for new ones with same specification.

The re-assembly is completely opposite to disassembly.

Important:

The oil seal of front wheel may damage when it removed, please replace it for a new one, otherwise it may accelerate wear-out of bearing due to its poor water-proof performance.

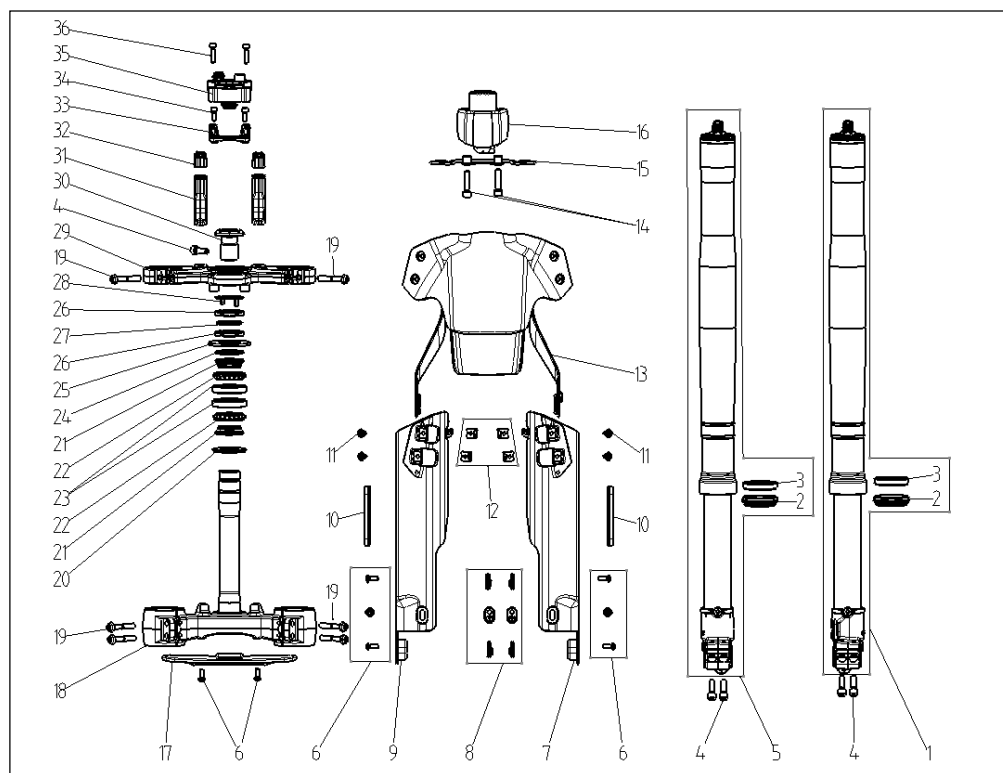
The removal for front bearing needs the drawing tools for this work only.

For an easy re-assembly, please heat up hole of front wheel bearing to 100°C, then press-fit the bearing.

Please pay attention there is elastic circlip between space of oil seal and bearing on ring gear side of ABS, whose missing assembly is not allowed.

9. Disassembly, re-assembly and maintenance for front fork kit

Front fork kit and its parts



1	Front shock absorber	EA	1
2	Dust proof sleeve for front shock absorber	EA	2
3	Oil seal	EA	2
4	Socket hex. screw	EA	5
5	Front shock absorber 2	EA	1
6	Socket spline bolt	EA	8
7	Left covering plate for front fork	EA	1
8	Pressing piece for front fender rim	EA	6
9	Right covering plate for front fork	EA	1
10	Side reflector	EA	2
11	Socket spline bolt	EA	4
12	Clipping nut	EA	4

13	Front fender	EA	1
14	Socket hex. screw	EA	2
15	Bracket for ignition cover	EA	1
16	Ignition switch, ignition cover	EA	1
17	Front upper fender	EA	1
18	Steering stem body	EA	1
19	Socket hex. bolt	EA	6
20	Steering seal piece	EA	1
21	Bearing circlip	EA	2
22	Steel ball kit	EA	2
23	Bearing base	EA	2
24	Washer for steering stem	EA	1
25	Dust proof cover for steering stem	EA	1
26	Locking nut for steering stem	EA	2
27	Rubber flat washer	EA	1
28	Locking washer	EA	1
29	Upper connective plate	EA	1
30	Locking bolt for steering stem	EA	1
31	Clipping base for handle bar	EA	2
32	Handle bar clip	EA	2
33	Bracket joint for damper	EA	1
34	Socket hex. screw	FU	2
35	Steering damper	EA	1
36	Socket hex. screw	EA	2

Disassembly and re-assembly for steering stem

Keep motorcycle upright by parking stand.

Remove handle bar kit by referring to removal of handle bar.

Remove front wheel kit by referring to its removal steps.

Remove 2 pieces of bolt 1, then remove damper 2.

Remove 2 pieces of bolt 3, then remove joint bracket 4 for damper.

Remove bolt 5, steering locking bolt 6, then remove 2 pieces of bolt 7.

Cut off connection of ignition lock, then remove upper connective plate 8..

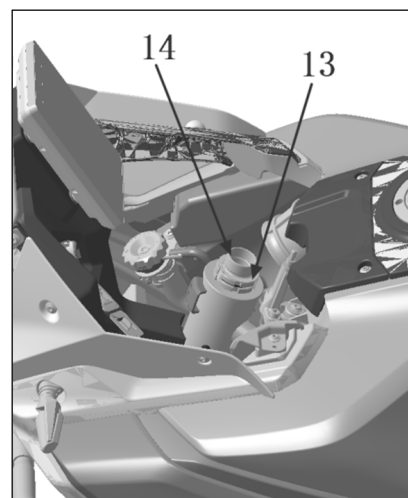
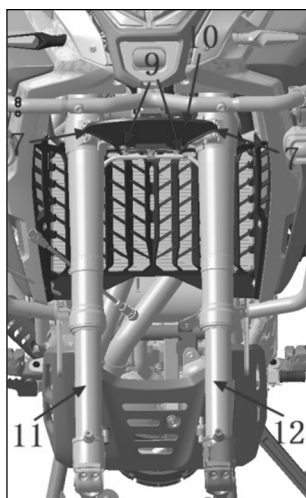
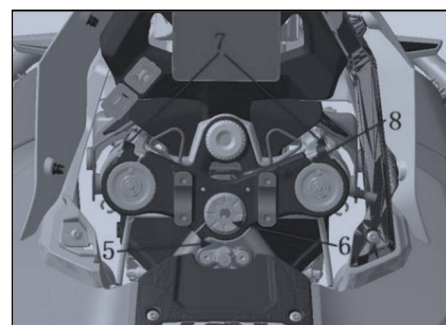
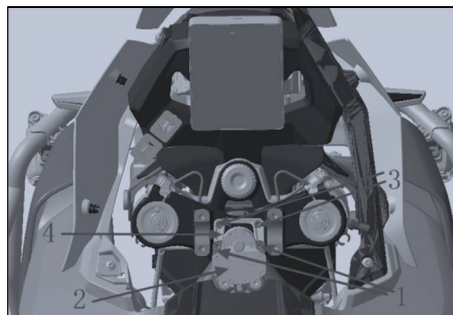
Remove 2 pieces of bolt 9, then remove front upper fender 10.

Remove 4 pieces of bolt 7, then remove front shock absorber 11 and 12.

Remove locking nut, bearing and related parts 13.

Remove steering stem 14.

The re-assembly is completely opposite to disassembly.



Caution:

When re-assembling, please well bind up wire pack of wire harness in place to the same condition before removal, otherwise the water-proof may be poor.

When re-assembling front fender, please bind up oil hose and ABS wire to the same condition before removal, otherwise the reference between front fender and oil hose may be noisy when it is driving.

When re-assembling front shock absorber, please pre-fasten front wheel axle first, then fasten the locking bolt between upper connective plate and shock absorber.

Caution:

When re-assembling bearing of steering, please coat it with lithium lubricant to ensure its lubrication.

When re-assembling, please confirm correct gap between ABS detector and sensitive ring of front wheel.

Please strictly assemble 2 pieces of locking nut and adjustable nut in place, please refer to table for their assembly, otherwise the performance for steering may be bad.

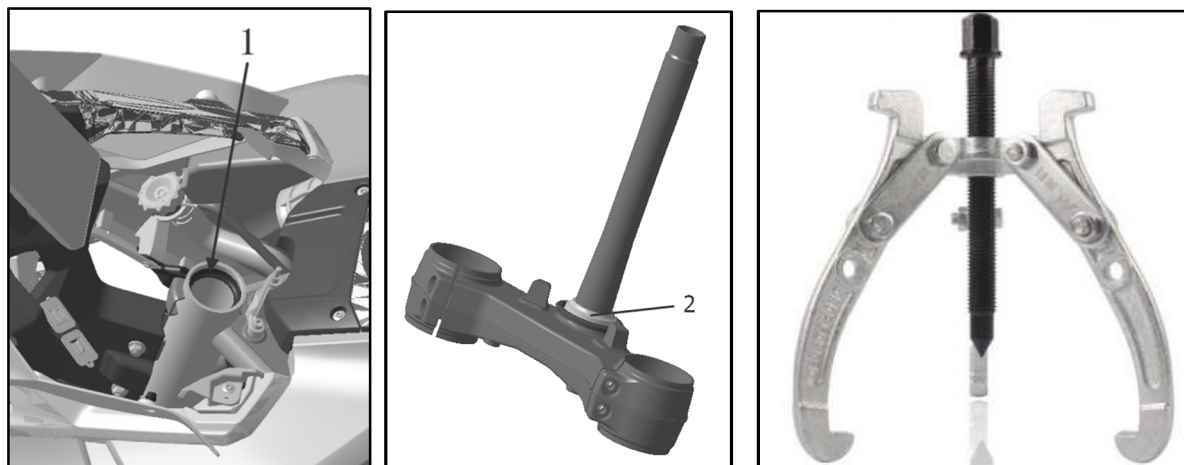
Parameters:

Torque for locking bolt between steering clip and upper plate	M8	N.m	18
Torque for steering damper and its bolt of bracket	M6	N.m	9
Torque for steering bolt	M28	N.m	50
Torque for bolt between front shock absorber, upper plate and steering stem	M8	N.m	22
Torque for lower locking nut of steering stem Torque for upper locking nut of steering stem	M35	N.m	The 1st piece: 60Nm (Swing left and right by 3 times, then turn back by 160°±8° then fasten by 30N.m) The 2 nd piece : 2N.m, align to groove
Mounting bolt torque for covering pieces	M6	N.m	6
Gap between detector and sensitive ring of front wheel	/	mm	0.5-1.5

Disassembly and re-assembly for steering bearing

Remove bearing base 1 in middle of standing tube by tools for this work only.

Remove bearing circlip 2 on steering stem by drawing tool for this work only (As picture shows)



Replace steering bearing for a new one with same specification.

Remove oil seal under bearing.

The re-assembly is completely opposite to disassembly.

Caution:

Please don't adopt wrong operation when removing steering bearing, please adopt tools for this work only, otherwise the steering stem may damage.

Please pay attention to assembling sequence of bearing, oil seal and flat washer when re-assembling steering bearing.

Important:

When press-fitting bearing, please heat it up to 100°C, then re-assemble it for an easy press-fitting.

Judge for gap of steering bearing

When driving in low speed, repeatedly and fast operate front brake lever to feel flexibility for steering bearing.

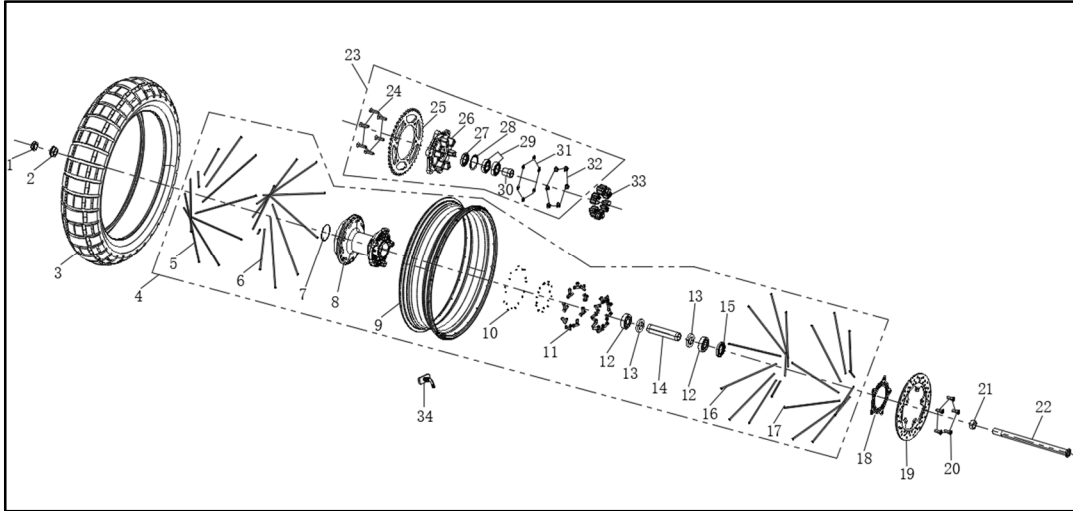
Please keep motorcycle upright by parking stand.

Repeatedly pull front wheel as picture shows to feel flexibility of steering bearing.



10. Disassembly, re-assembly and maintenance for rear wheel kit

Rear wheel kit and its parts



1	Non-metallic nut	PCS	1
2	Collar	PCS	1
3	Tire	PCS	1
4	Rear wheel	PCS	1
5	Outer spoke of rear wheel	PCS	9
6	Inner spoke of rear wheel	PCS	9
7	Seal ring	PCS	1
8	Rear wheel hub	PCS	1
9	Rear wheel rim	PCS	1
10	Plug bolt	PCS	36
11	Nut for front wheel spoke	PCS	36
12	Bearing	PCS	2
13	Rear hub jacket	PCS	2
14	Collar	PCS	1
15	Oil seal	PCS	1
16	Inner spoke of rear wheel	PCS	9
17	Outer spoke of rear wheel	PCS	9
18	ABS ring gear	PCS	1
19	Rear brake plate	PCS	1
20	Fastening bolt for brake plate	PCS	5
21	Collar	PCS	1
22	Axle	PCS	1
23	Damper kit	SET	1
24	Bolt for sprocket wheel	PCS	6

Service Manual for LX800-2

25	Sprocket wheel	PCS	1
26	Sprocket base	PCS	1
27	Oil seal	PCS	1
28	Elastic circlip	PCS	1
29	Bearing	PCS	2
30	Collar	PCS	1
31	Flat washer	PCS	6
32	Metallic nut	PCS	6
33	Rear wheel damping piece	PCS	6
34	Tire pressure sensor	PCS	1

Removal for rear wheel

Keep motorcycle upright by parking stand.

Loosen nut 1 for chain adjustor.

Remove rear wheel axle and its nut 2.

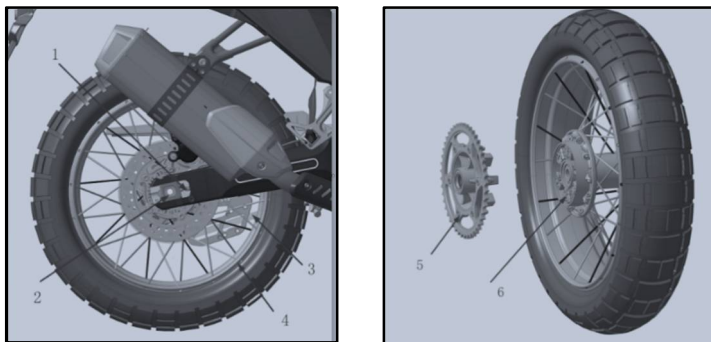
Drop off chain 3.

Remove rear wheel kit 4.

Remove damper kit 5.

Remove damping rubber piece 6.

The re-assembly is completely opposite to disassembly.



Caution:

When rear caliper removed, please don't operate rear brake pedal, otherwise the moving piston is difficult for caliper assembly.

Caution:

When re-assembling, there shouldn't be any dirt on working surface of brake plate.

When replaced, please repeatedly operate rear brake pedal to confirm its normal performance.

When rear tire assembled, please confirm its moving balancing on corresponding equipment.

When re-assembling rear wheel collar or oil seal, please coat it with lithium lubricant.

Parameters:

Rear wheel		Spoke wheel/Aluminum wheel	4.0×18
Rear tire		Tubeless tire	150/70 R18

End surface run-out of rear wheel shall not be higher than		mm	1
Radial run-out of rear wheel shall not be higher than		mm	1
Torque for chain adjuster nut	M8	N.m	18
Torque for rear wheel axle	M20	N.m	105
Fastening torque for rear brake plate	M8	N.m	35
Loctite	Loctite 262	ml	10
Lubricant		g	5
Allowed max. imbalance for rear wheel		g	5
Air pressure in tire		KPa	2.5

Removal for damper kit

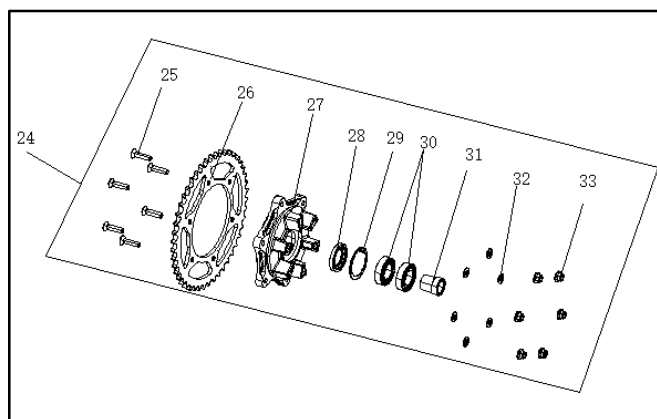
Remove bolt 25, flat washer 22 and nut 33 for connecting sprocket wheel.

Remove sprocket wheel 26.

Remove collar 27 of damper.

Remove oil seal 28 inside damper, split circlip 29 and bearing 30.

The re-assembly is completely opposite to Disassembly.



Important:

When re-assembling sprocket wheel, please coat bolt with Loctite.

Please coat collar of damper or its oil seal with lithium lubricant when re-assembling.

The oil seal of damper may damage when it removed, please replace it for a new one.

The removal for damper bearing needs the pulling tool for this work only.

For an easy re-assembly, please heat up hole of bearing to 100°C, then press-fit bearing.

Parameters:

Fastening torque for bolt and nut on sprocket	M8	N.m	35
Loctite	Loctite 262	ml	10
Lubricant	/	g	5

Removal for brake plate

Remove rear wheel and put it on working bench.

Remove fastening bolt for brake plate, then remove the plate and gear ring.

The re-assembly is completely opposite to disassembly.

Caution:

There is Loctite on screw of rear brake plate, please adopt tools meeting specification, otherwise its removal would be difficult.

Important:

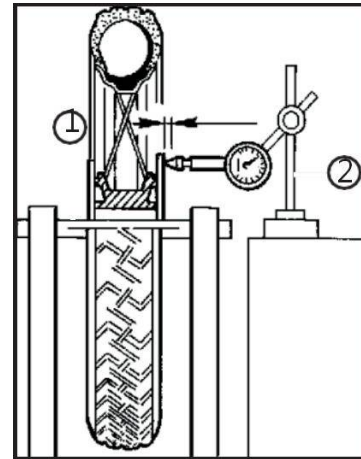
When re-assembling, please pay attention there shouldn't be any dirt on working surface of brake pad and plate.

When re-assembling brake plate, please coat its fastening bolt with Loctite.

Please confirm run-out of end surface of brake plate when it re-assembled.

Put rear wheel on balancing rack by balancing shaft (1).

Measure run-out of end surface for brake plate by measuring device (2).



Run-out of end surface shall not be higher than	mm	0.2
---	----	-----

Removal for rear tire

Remove rear wheel kit and put it onto working bench.

Remove air valve core and exhaust air in tire.

Remove rear tire by tools for this work only.

Remove air valve core.

The re-assembly is completely opposite to disassembly.

Caution:

The re-assembly for tire needs tools and devices for this work only, the forced assembly may permanently damage tire.

Caution:

When re-assembling tire, please align its light point to valve core on wheel hub, which

is easy for re-assembly.

Removal for rear wheel bearing and oil seal

When rear wheel removed, please put it onto working bench.

Remove brake plate and tire.

Remove oil seal, elastic circlip, bearing and inner liner for rear wheel by snap pliers in turn.

Replace related parts for new ones with same specification.

The re-assembly is completely opposite to disassembly.

Caution:

The oil seal for rear wheel may damage once it removed, please replace it for a new one.

The removal for rear wheel bearing needs the pulling tools for this work only.

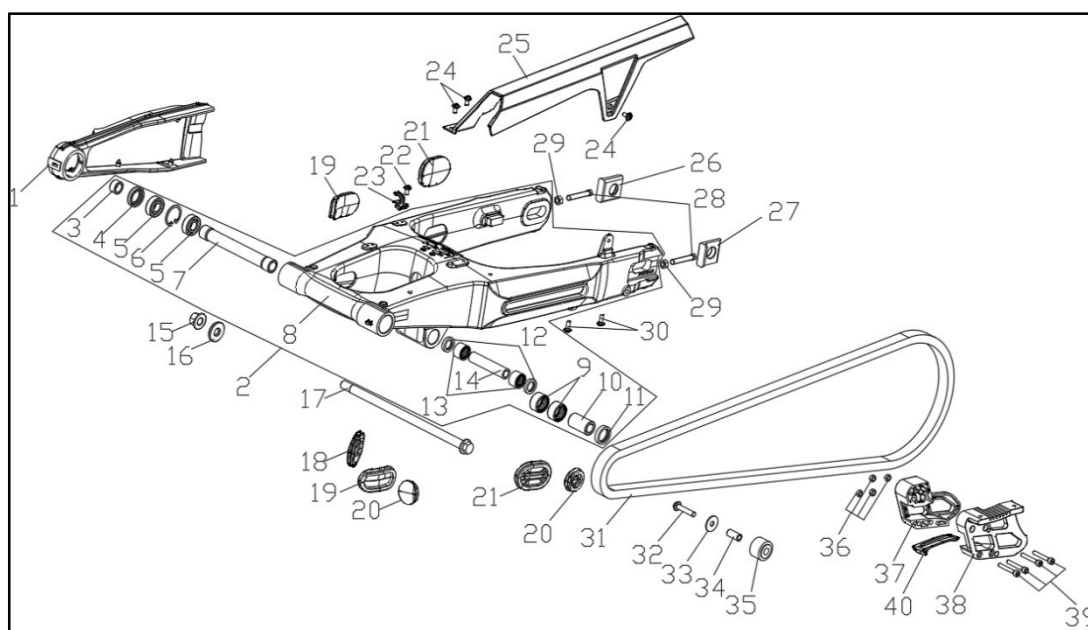
For an easy re-assembly, please heat up hole for bearing of rear wheel to 100°C, then press-fit bearing.

Please pay attention to positioning circlip on one side of bearing, whose missing assembly is not allowed.

When press-fitting bearing, which needs device for this work, press the side (Right) with elastic circlip to bottom, then press-fit bearing on the other side.

11. Disassembly, re-assembly and maintenance for rear suspension

Rear suspension kit and its parts



1	Chain slider	PCS	1
2	Rear fork kit	SET	1
3	Collar	PCS	1
4	Oil seal	PCS	1
5	Bearing	PCS	2
6	Elastic circlip	PCS	1
7	Collar	PCS	1
8	Rear fork body	PCS	1
9	Bearing	PCS	2
10	Collar	PCS	1
11	Oil seal	PCS	1
12	Oil seal	PCS	2
13	Bearing	PCS	2
14	Collar	PCS	1
15	Metallic locking nut	PCS	1
16	Collar	PCS	1
17	Axle	PCS	1

Service Manual for LX800-2

18	Dust-proof cover of rear fork	PCS	1
19	Dust-proof cover of rear fork	PCS	2
20	Dust-proof cover of rear fork	PCS	2
21	Dust-proof cover of rear fork	PCS	2
22	Socket spline bolt	PCS	1
23	Socket spline bolt	PCS	3
24	Tube clamp	PCS	1
25	Chain case	PCS	1
26	Chain adjustor 2	PCS	1
27	Chain adjustor	PCS	1
28	Hex. bolt	PCS	2
29	Hex. nut	PCS	2
30	Socket spline bolt	PCS	2
31	Chain	EA	1
32	Socket hex. flange bolt	PCS	1
33	Flat washer	PCS	1
34	Collar	PCS	1
35	Chain holding wheel	PCS	1
36	Hex. nut	PCS	4
37	Lower cover of chain case	PCS	1
38	Lower cover of chain case	PCS	1
39	Socket hex. screw	PCS	4
40	Lower cover of chain case	PCS	1

Removal for rear shock absorber

Keep motorcycle upright by parking stand.

Remove left and right side cover by referring to removal of fuel tank.

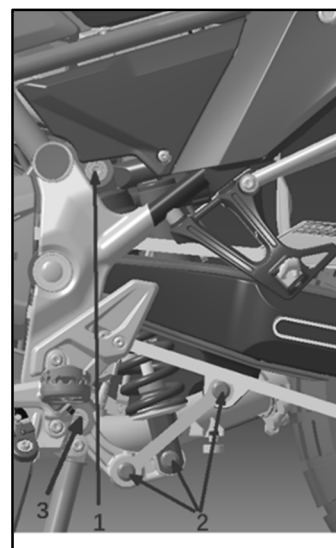
Remove upper mounting bolt 1 of rear shock absorber by tool.

Remove smaller swinging rack, mounting bolt 3 and 2 for rear shock absorber by tools.

Remove mounting bolt 3 and bigger swinging rack by tool, finally remove rear shock absorber, bigger and smaller swinging rack.

The re-assembly is completely opposite to disassembly.

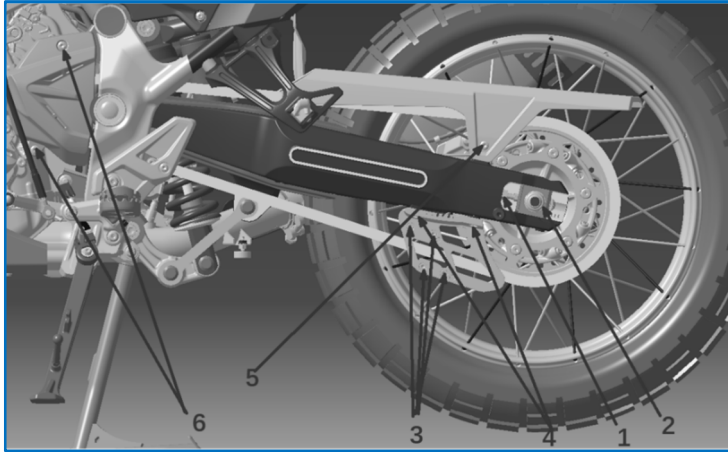
Parameters:



Upper and lower mounting bolt for rear shock absorber	M12	Nm	60
Mounting bolt for bigger and smaller swinging rack	M12	Nm	60

Lithium lubricant		g	15
-------------------	--	---	----

Disassembly and re-assembly for rear fork and chain



Keep motorcycle upright by parking stand.

Remove rear shock absorber by referring to its corresponding content.

Remove nut 1 of chain adjustor.

Loosen nut 2 of rear wheel axle, the powerfully push front wheel forward for a while, when chain loosened, remove rear wheel axle and the wheel kit.

Remove 4 pieces of bolt 3 and 2, then remove chain guider.

Remove 3 pieces of bolt 5, then remove chain case.

Remove 2 pieces of bolt 6 for left decorative cover and 3 pieces of bolt for right front side cover.

Remove rear fork axle, nut and flat washer, then remove the fork.

The re-assembly is completely opposite to disassembly.

Caution:

When re-assembling, adjust left and right chain adjustor first, then fasten nut of rear wheel axle, then fasten left and right chain adjustor.

Important:

When re-assembling, please check chain, left and right adjustor are at same scale mark.

Check and adjust chain tensioning force when motorcycle is under 0 loading.

Parameters:

Torque for chain adjustor nut	M8	N.m	14
Nut torque for rear wheel axle	M20	N.m	95
Torque for socket hex. screw	M6	N.m	6

Torque for rear fork nut	M14	N.m	120
Mounting bolt for covering parts	M5	N.m	4.5
Torque for socket spline bolt	M6	N.m	6
Chain deflection		N.m	35-45

Disassembly and re-assembly for bearing of rear fork

Put the removed rear fork on working bench.

Remove collar at rear fork tube, oil seal, elastic circlip, bearing, inner tube of rear fork, needle bearing, collar and oil seal in turn by tools for this work.

Remove collar in bearing hoe of smaller rack connecting rear fork by tools, then remove oil seal and needle bearing.

The re-assembly is completely opposite to disassembly.

Caution:

Please remove bearing by tool for it only, forced disassembly may damage the parts.

Important:

To meet strength of product, the needle bearing is full of needles.

When re-assembling bearing, please don't let needles drop from bearing, when re-assembling collar, oil seal and bearing, please coat their surface with lithium lubricant.

Disassembly and re-assembly for chain slider

Remove 2 pieces of bolt 1, then remove left decorative cover of engine.

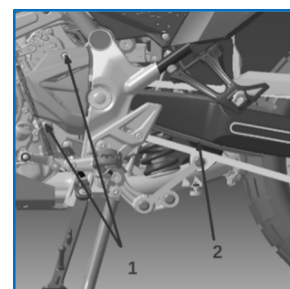
Remove chain slider 4.

Replace chain slider for a new one with same specification.

Caution:

When re-assembling chain slider, please clip the positioning pillar into limit hole on rear fork.

Please replace the chain slider for a new one with same specification.



Parameters:

Bolt torque for engine left decorative cover	M6	N.m	9
--	----	-----	---

Disassembly and re-assembly for driving sprocket wheel

Keep motorcycle upright by parking stand.

Loosen bolt 1 of chain case

Loosen nut 2 and bolt 3 for chain adjustor.

Loosen nut 4 for rear wheel axle, then powerfully move rear wheel forward to loosen the chain.

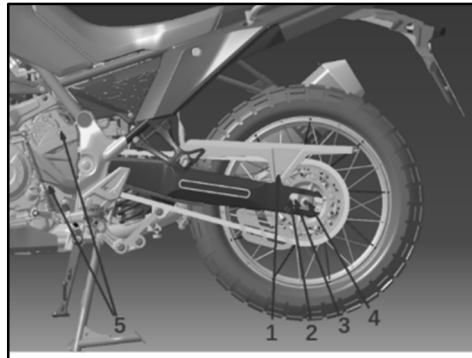
Loosen 2 pieces of bolt 5, then remove left decorative cover of engine.

Remove mounting bolt for driving sprocket wheel.

Remove driving sprocket wheel.

Replace the sprocket wheel for a new one with same specification.

The re-assembly is completely opposite to disassembly.



Caution:

When re-assembling, please adjust the chain adjustor on both sides, then fasten nut of rear wheel axle, then fasten the adjustors.

Important:

When re-assembling, please check the chain, left and right adjustors are at same mark line.

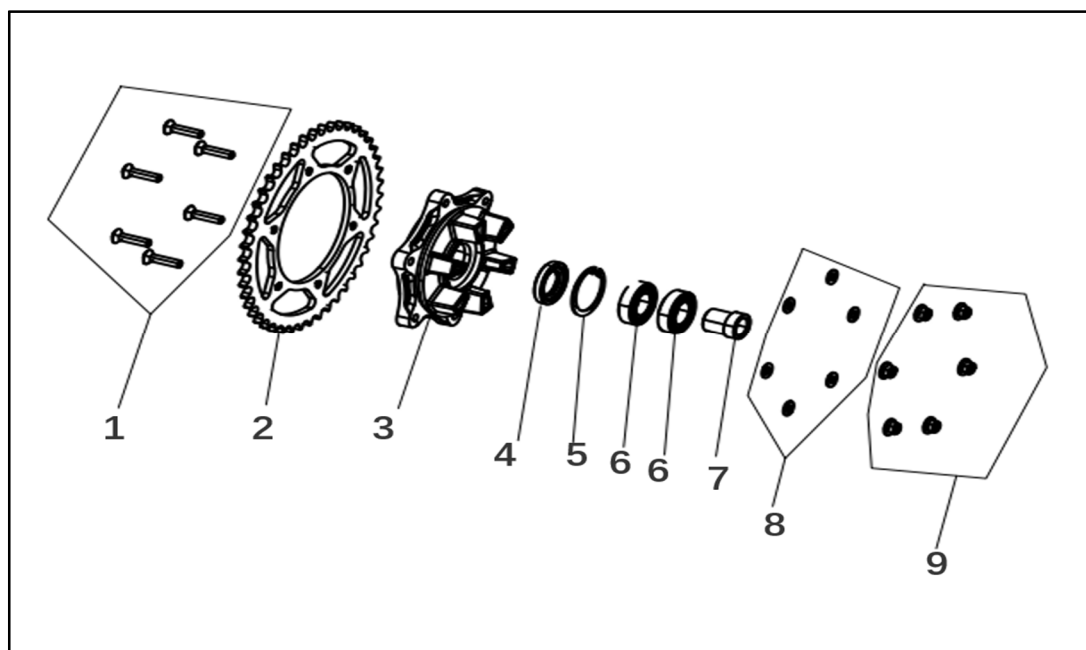
Check and adjust tensioning force of chain when motorcycle is under 0 loading.

Please coat bolt with Loctite when re-assembling sprocket wheel.

Parameters:

Nut for chain adjustor	M8	N.m	14
Nut torque for rear wheel axle	M20	N.m	95
Torque for engine left decorative cover	M6	N.m	9
Bolt torque for driving sprocket wheel	M10	N.m	55
Loctite specification	Loctite 262	ml	10
Chain deflection		mm	30-40

Disassembly and re-assembly for damper kit



1	Bolt for sprocket wheel	EA	6
2	Sprocket wheel	EA	1
3	Sprocket wheel base	EA	1
4	Oil seal	EA	1
5	Elastic circlip	EA	1
6	Bearing	EA	2
7	Collar	EA	1
8	Flat washer	EA	6
9	Metallic flange nut	EA	6

Keep motorcycle upright by parking stand.

Loosen nut on chain adjustor.

Loosen nut on rear wheel axle, then powerfully move rear wheel forward, then remove rear wheel axle.

Remove damper kit.

Replace damper and its rubber pieces for new ones with same specification.

The re-assembly is completely opposite to disassembly.

Caution:

When re-assembling, please adjust chain adjustors on both sides first, then fasten nut for rear wheel axle, then fasten the adjustors.

Important:

When re-assembling, please check the chain, left and right adjustors are at same mark line.

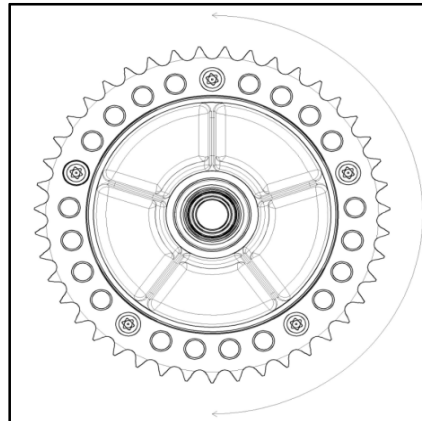
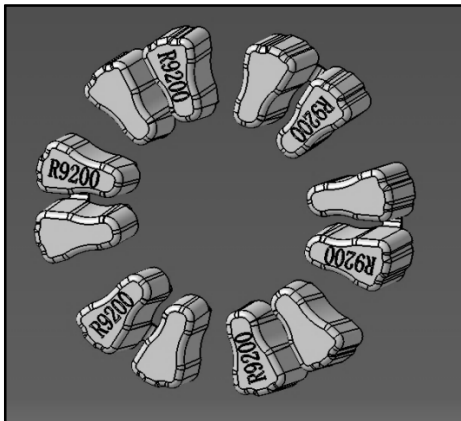
Check and adjust tensioning force of chain when motorcycle is under 0 loading.

Please coat damper body with lithium lubricant when relacing sprocket wheel.

Parameters:

Nut torque for chain adjustor	M8	N.m	Front 9/Rear 22
Nut torque for rear wheel axle	M20	N.m	95
Chain deflection		mm	35-45

Disassembly and re-assembly for damper of rear wheel



Keep motorcycle upright by parking stand.

Remove rubber pieces by referring to removal for damper kit.

Check if there is wear-out or crack on damping pieces, please replace if it is necessary.

It also could be judged without removing apart from motorcycle, when it is parking, lift up rear wheel and lay stress onto sprocket as figure shows, if there is obvious radial run-out, which means rubber piece already worn out which needs be replaced.

Caution:

Sudden acceleration or deceleration make rubber pieces repeatedly impacted, which may produce heat, the rubber piece is in sealed chamber with poor heat radiation, which speeds up its wear-out.

Pre-condition for chain replacement

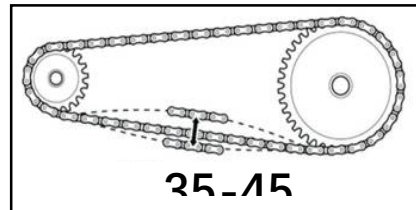
Locked-up links on chain.

Roller of chain cracked.

There are missing seal rings on chain.

Chain is with twice longer to normal link distance.

When adjust to limit but still fall to meet demands and higher than the data.

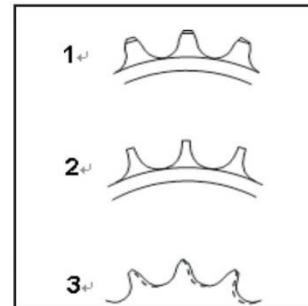


Pre-condition for sprocket replacement

Surface of sprocket wheel distorted.

Tooth cracked or damaged.

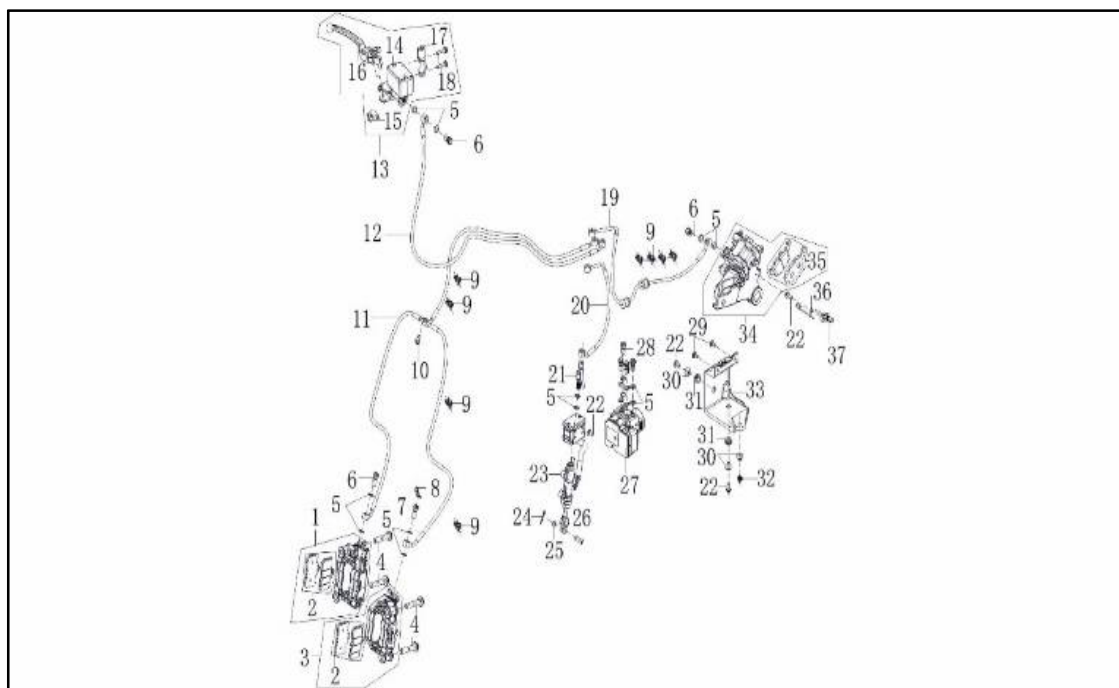
In the figure on the right, 1 is qualified while 2 and 3 need be replaced.



12. Disassembly, re-assembly and maintenance for brake

kit

Brake kit and its parts



1	Lower pump 2 of front disc brake	EA	1
2	Front brake pads kit	SET	2
3	Lower pump for front disc brake	EA	1
4	Socket hex. flange bolt	EA	4
5	Flat washer	EA	18
6	Bolt for brake hose	EA	3
7	Bolt for brake hose	EA	1
8	Screw cap for air exhaust	EA	1
9	Wire clip	EA	8
10	Socket flange bolt	EA	1
11	ABS connective oil hose	EA	1
12	ABS connective oil hose	EA	1
13	Front brake upper pump	EA	1
14	Front brake main cylinder	EA	1

15	Front brake switch	EA	1
16	Right lever	EA	1
17	Lever clip 2	EA	1
18	Hex. flange bolt	EA	2
19	ABS connective oil hose	EA	1
20	ABS connective oil hose	EA	1
21	Rear brake switch	EA	1
22	Socket spline bolt	EA	4
23	Rear brake upper pump	EA	1
24	Split pin	EA	1
25	Flat washer	EA	1
26	Pin shaft	EA	3
27	ABS kit	EA	1
28	Hose bolt for disc brake	EA	4
29	Socket spline bolt	EA	2
30	I-ring	EA	2
31	Collar	EA	3
32	Socket spline bolt	EA	1
33	Middle plate bracket	EA	1
34	Rear brake lower pump	EA	1
35	Rear brake pad kit	SET	1
36	Wire clip	EA	1
37	Speed sensor	EA	1

Replacement for front brake pads

Keep motorcycle upright by parking stand.

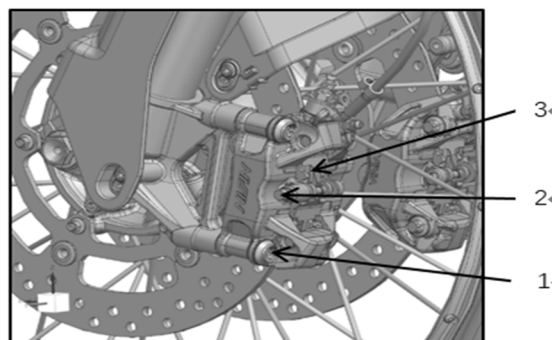
Remove mounting bolt 1 by tools.

When bolt 2 removed, pressing plate 3 bounces up and remove it.

Finally remove brake pads.

Replace brake pads for new ones. (Removal for left and right sides are in same way).

The re-assembly is completely opposite to disassembly.



Important:

When re-assembling, missing assembly for washer between end surface of brake pads and limit groove on front caliper is not allowed, please assemble them in place.

Service Manual for LX800-2

When brake pads removed, please don't operate front brake lever to avoid moving piston is difficult for brake pads.

When replacing brake pads, please replace the inner and outer ones together.

When re-assembling, there shouldn't be any dirt on working surface between brake pads and plate.

When replaced, please repeatedly operate brake lever to confirm its normal work.

Dispose the removed pads in environment friendly way.

Parameters:

Torque for dust cap	M10	N.m	2~3
Torque for guiding bar of pads	M6	N.m	15~20
Torque for caliper bolt	M8	N.m	35

Replacement for rear brake pads

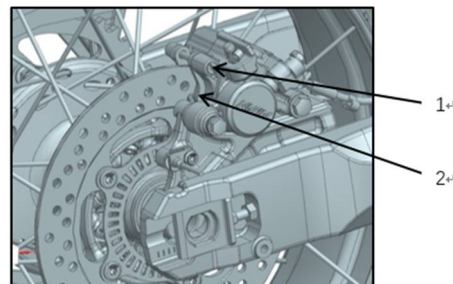
Keep motorcycle upright by parking stand.

Remove guiding bar 1 of pads.

Remove pads 2 of rear brake.

Replace rear brake pads for new ones.

The re-assembly is opposite to disassembly.



Important:

When re-assembling, missing assembly for washer between end surface of brake pads and limit groove on rear caliper is not allowed, please assemble them in place.

When brake pads removed, please don't operate rear brake pedal to avoid moving piston is difficult for brake pads.

When replacing brake pads, please replace the inner and outer ones together.

When re-assembling, there shouldn't be any dirt on working surface between brake pads and plate.

When replaced, please repeatedly operate brake pedal to confirm its normal work.

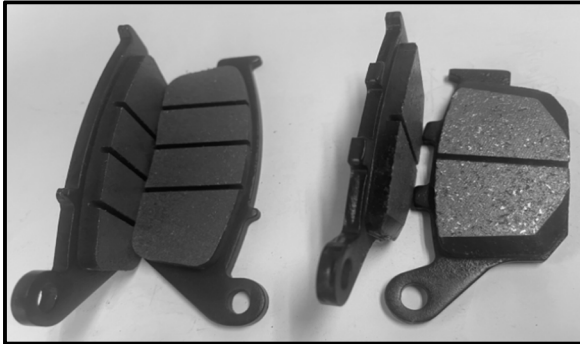
Dispose the removed pads in environment friendly way.

Parameters:

Torque for pad guiding tube	M6	N.m	9
-----------------------------	----	-----	---

Inspection for brake pads

The wear-out mark must be clearly seen as figure below shows, the least thickness shall be 1mm.



Inspection for liquid level in front and rear brake

Keep motorcycle upright by parking stand.

Get oil pump of front brake into flat position by turning lever.

The liquid level in pump of front and rear brake must be between marks UPPER/LOWER.

Caution:

During consumption of brake pads from brand new to limit, the maximum and minimum capacity are both meeting demands.

The filling-up for brake liquid usually doesn't due to brake pads consumption.

During working life of brake pads, of the brake liquid is lower than the lowest level, which means there may have other malfunctions.

Replacement for liquid in front brake

Keep motorcycle upright by parking stand.

Turn the grip to let oil cup cap flat.

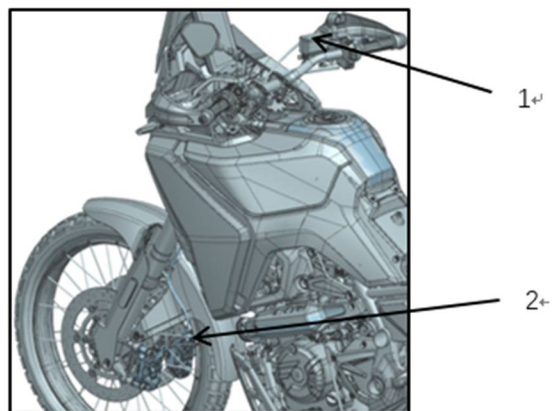
Remove cup cover and its rubber cover by tool.

Connect liquid extraction kit to air exhaust screw 2 on caliper.

Open air exhaust screw by turning it half round by tool.

Start extraction kit until all liquid drained off.

Fill oil cup with fresh liquid, meanwhile starting



Service Manual for LX800-2

Extraction kit until all the brake hoses full of liquid.

Fasten air exhaust screw.

Confirm if the level is within marks UPPER and LOWER.

Connect ABS controller to its diagnosis kit to check malfunction code, if there is, please make inspection and troubleshooting.

The re-assembly is opposite to disassembly.

Caution:

When brake liquid filled up, please wipe up greasy dirt around air exhaust screw of lower caliper and oil cup.

Important:

Please don't let brake liquid touch any painting part on motorcycle because it is corrosive.

When extracting liquid, please let its level under mark LOWER, otherwise the air may get into brake t, which needs extraction once again.

When filled up, please lay stable stress on brake lever and keep for a while to check if there is leakage, if so, that means there is problem on connection between hoses or threaded parts, please replace immediately.

Mixture of brake liquid between different brands or specifications is not allowed.

Parameters:

Torque for oil cup cover	M4	N.m	2~3
Torque for air exhaust screw	M8	N.m	6
Liquid capacity in front brake		mL	150
Liquid specification			DOT4

Replacement for brake liquid in rear brake

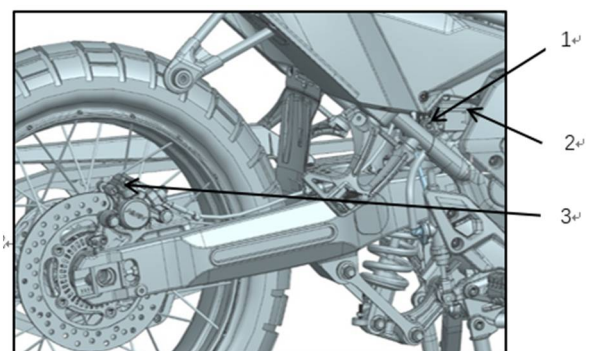
Keep motorcycle upright by parking stand.

Loosen mounting bolt 1 for oil cup, then remove the cup.

Remove cup cover 2 and its rubber cover.

Connect liquid extraction kit to air exhaust screw 2 on caliper.

Open air exhaust screw by turning it half round by wrench.



Start extraction kit until all liquid drained off.

Service Manual for LX800-2

Fill oil cup with fresh liquid, meanwhile starting
Extraction kit until all the brake hoses full of liquid.

Fasten air exhaust screw.

Confirm if the level is within marks UPPER and LOWER.

Connect ABS controller to its diagnosis kit to check malfunction code, if there is, please make inspection and troubleshooting.

The re-assembly is opposite to disassembly.

Caution:

When brake liquid filled up, please wipe up greasy dirt around air exhaust screw of rear caliper and oil cup.

Important:

Please don't let brake liquid touch any painting part on motorcycle because it is corrosive.

When extracting liquid, please let its level under mark LOWER, otherwise the air may get into brake t, which needs extraction once again.

When filled up, please lay stable stress on brake lever and keep for a while to check if there is leakage, if so, that means there is problem on connection between hoses or threaded parts, please replace immediately.

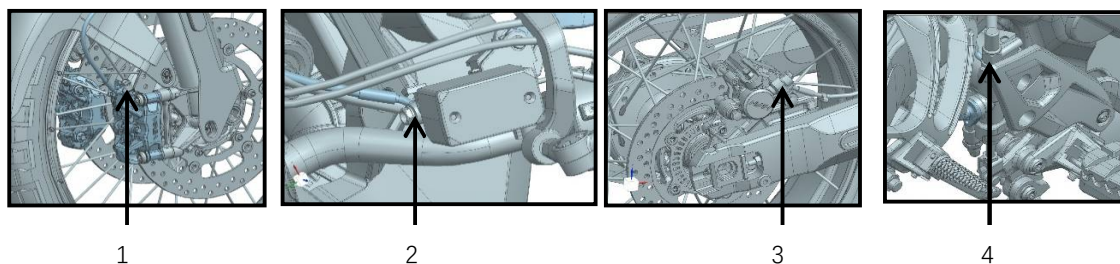
Mixture of brake liquid between different brands or specifications is not allowed

Parameters:

Torque for oil cup cover	M4	N.m	2~3
Torque for air exhaust screw	M8	N.m	4~7
Liquid capacity in rear brake		mL	150
Liquid specification			DOT4

Replacement for parts in ABS, front and rear brake hoses

Remove fuel tank kit by referring its removal steps.



Remove punching bolt 1 for left and 2 t front upper pump, bolt 2 for mounting oil hose for upper pump, bolt 3 for rear lower pump, rear switch 4 of rear upper pump and related seal ring.

Service Manual for LX800-2

Remove middle plate 6.

Remove socket spline bolt 8, then remove right side cover 9.

Remove 3 pieces of bolt 10 (2 at side and 1 at bottom), remove bracket 11 for middle plate;

Remove socket plug 14 for ABS.

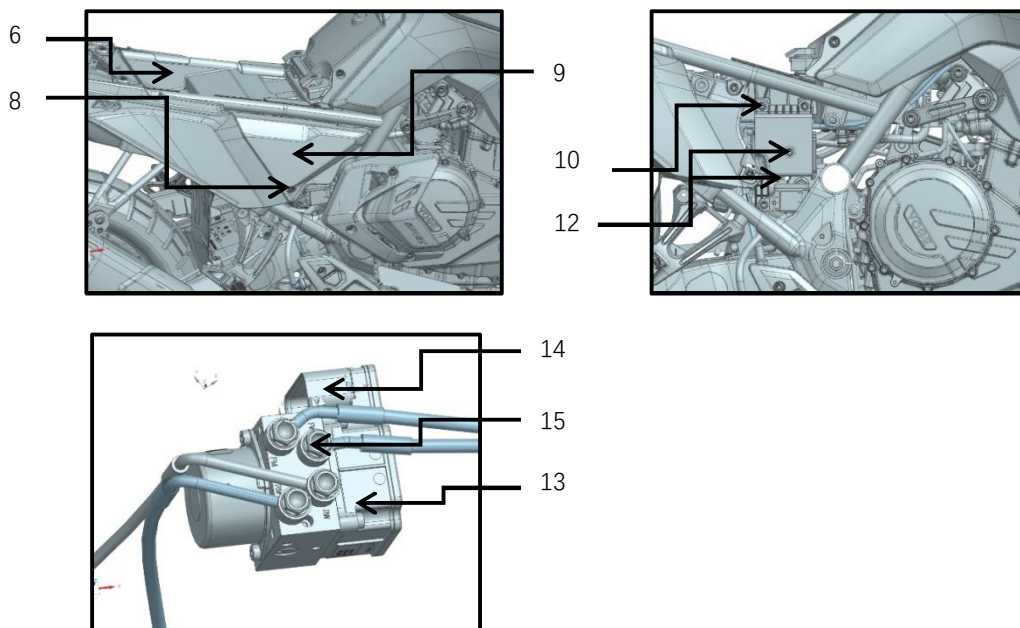
Remove 2 pieces of socket spline bolt 12, then remove ABS controller 13.

Remove 4 pieces of punching bolt 15 and 8 pieces of seal ring for connecting brake oil hose and ABS controller.

When the steps above finished, the ABS controller and brake oil hose could be removed.

The re-assembly is completely opposite to disassembly.

Finally replace and fill up brake liquid according to ways above and then check it.



Important:

The brake liquid is corrosive, when filling up and draining off, please don't let it touch skin and cloths.

When re-assembling, the gasket at plate of punching bolt needs be replaced for a new one, otherwise the oil may leak.

Every adjacent seal surface needs be assembled gasket.

Parameters:

Torque for punching bolt and ABS	M10	N.m	24
Torque for punching bolt, front and rear brake	M10	N.m	32
Torque for air exhaust screw	M8	N.m	6
Torque for ABS mounting bracket and frame	M6	N.m	9

Removal for speed sensor of rear wheel

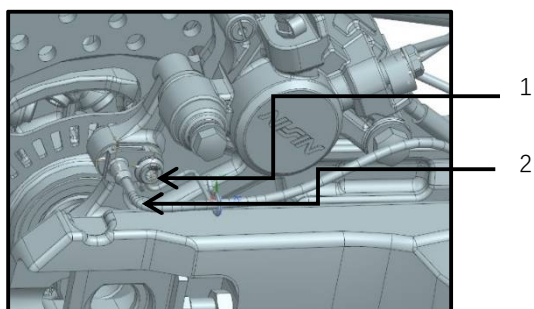
Keep motorcycle upright by parking stand.

Remove bolt 1 and speed sensor 2 of rear wheel.

The re-assembly is completely opposite to disassembly.

Important:

When speed sensor re-assembled, get rear wheel suspend and turn it, check gap changing between speed sensor and ring gear of ABS.



Parameters:

Torque for sensor bolt	M6	Nm	9
Gap between sensor and gear ring	/	mm	0.5~1.5

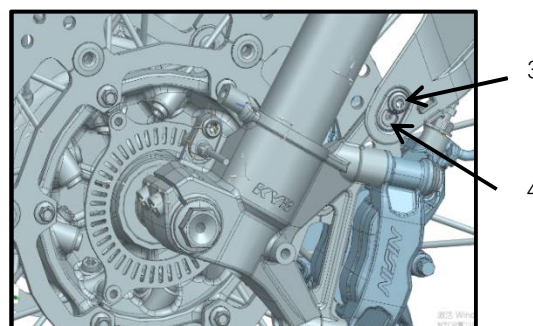
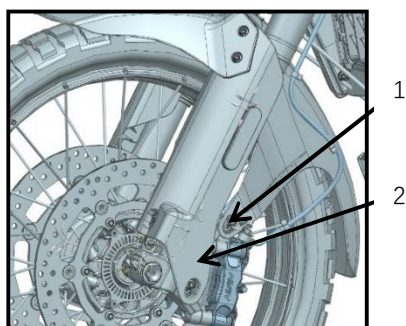
Removal for speed sensor of front wheel

Keep motorcycle upright by parking stand.

Loosen 6 pieces of socket spline bolt 1, then remove front fender kit 2.

Loosen socket spine bolt then remove speed sensor 4.

The re-assembly is completely opposite to disassembly.



Important:

When speed sensor reassembled, please et front wheel suspend and turn it, check gap

changing between speed sensor and gear ring of ABS.

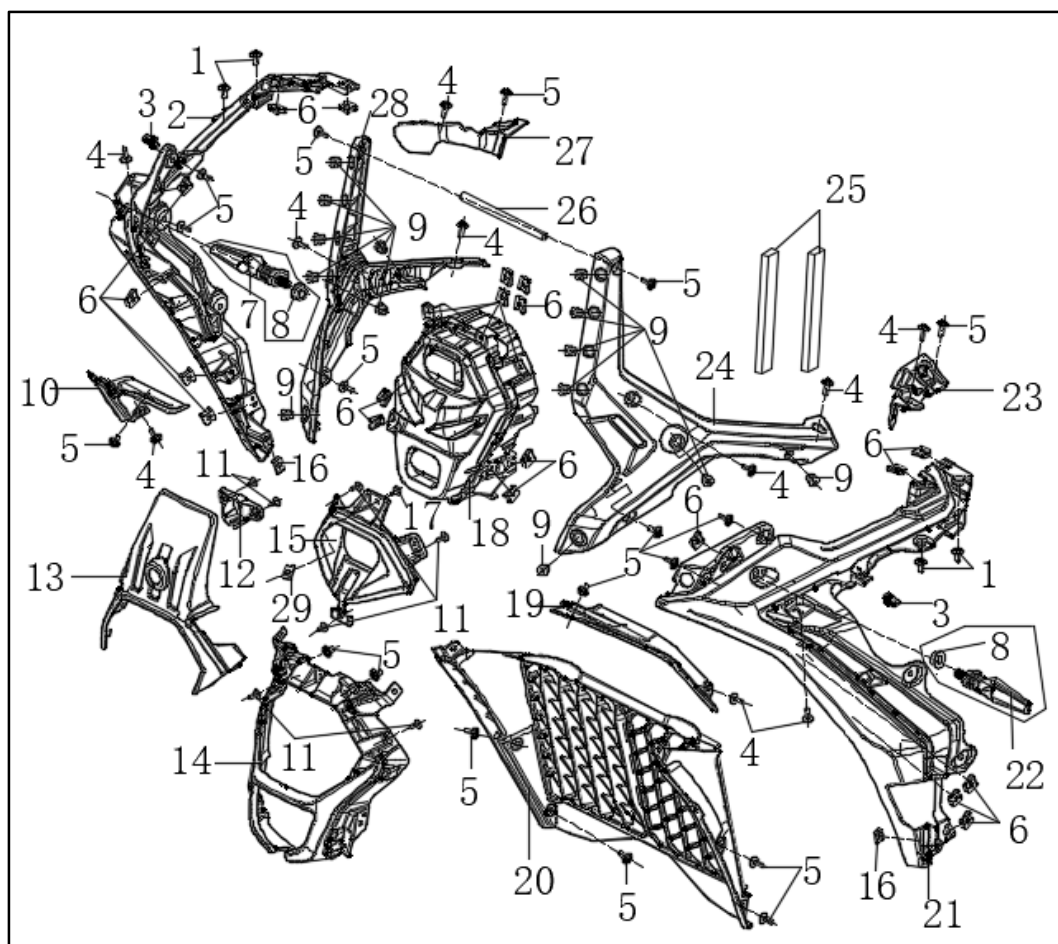
Parameters:

Torque for sensor bolt	M6	Nm	6
Gap between sensor and gear ring		mm	0.5~1.5

13. Disassembly, re-assembly and maintenance for lights

kit

Headlight and its parts



1	Socket spline bolt	EA	4
2	Inner plate of right side strip	EA	1
3	Fixing clip	EA	2
4	Socket spline bolt	EA	10
5	Socket spline bolt	EA	18
6	Clipping nut	EA	22
7	Right turning signal light	EA	1

8	Hex. flange bolt	EA	2
9	Rubber coating nut	EA	14
10	Right wind guiding plate	EA	1
11	Self-tapping screw	EA	7
12	Fairing cover bracket	EA	1
13	Wind plate of fairing cover	EA	1
14	Fairing cover	EA	1
15	Decorative piece of fairing cover	EA	1
16	Clipping nut	EA	2
17	Self-tapping screw	EA	1
18	Headlight	EA	1
19	Left wind guiding plate	EA	1
20	Decorative cover of hear radiator	EA	1
21	Inner plate of left side strip	EA	1
22	Left turning signal light	EA	1
23	Inner plate of left protective plate of fuel tank	EA	1
24	Left protective plate of fairing cover	EA	1
25	Foam sheet	EA	2
26	Threaded sleeve	EA	1
27	Inner plate of right protective plate of fuel tank	EA	1
28	Right protective plate of fairing cover	EA	1
29	Clipping nut	EA	1

Removal for headlight kit

Keep motorcycle upright by parking stand.

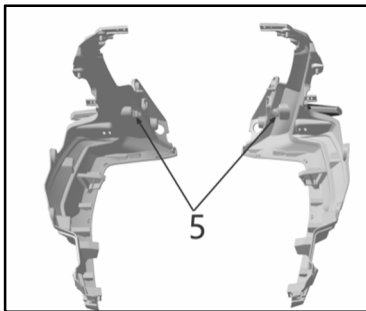
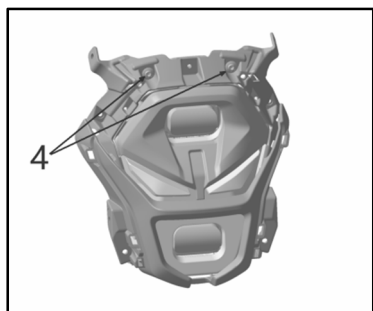
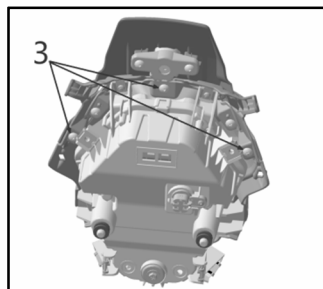
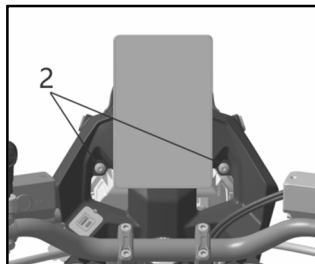
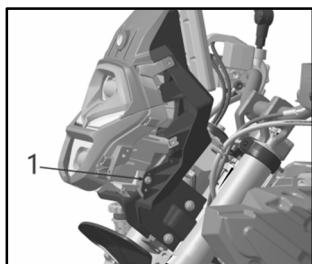
Remove front body kit by referring to removal of fuel tank.

Remove bolt 1 (Left and right side 1 piece each) and 2, then remove headlight kit and cut off connector plug of headlight.

Remove screw 3 and bolt 4, then remove fairing cover, then remove headlight;

Remove bolt 5 then remove left and right turning signal light.

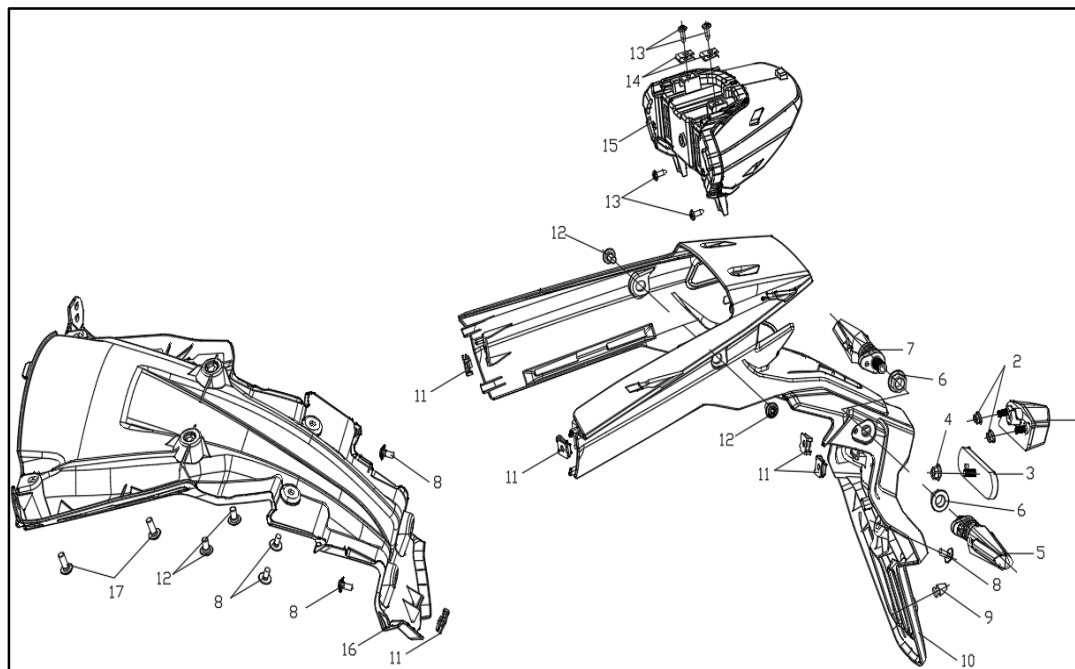
The re-assembly is completely oppoite to disassembly.



Parameters:

Socket spline bolt for covering parts	M5	Nm	4.5
	M6	Nm	6
Self-tapping screw	ST4.2	N.m	1
Bolt of turning signal light	M10	N.m	4

Taillight, rear turning signal, registration plate and their parts



1	Rear registration plate light	EA	1
2	Hex. flange nut	EA	2
3	Rear reflector	EA	1
4	Hex. flange nut	EA	1
6	Left turning signal light 2	EA	1
6	Hex. flange nut	EA	2
7	Right turning signal light 2	EA	1
8	Socket spline bolt	EA	4
9	Rubber nail	EA	1
10	Rear fender	EA	1
11	Clipping nut	EA	5
12	Socket spline bolt	EA	4
13	Self-tapping screw	EA	4
14	Clipping nut	EA	2
15	Taillight	EA	1
16	Liner plate of rear fender	EA	1
17	Socket spline bolt	EA	2

Removal for taillight, rear turning signal light and rear registration light

Keep motorcycle upright by parking stand;

Remove bolt 1 (Left and right side 1 piece each), then remove left and right side cover;

Remove bolt 2, then remove rear luggage rack;

Open seat lock by key, then remove the passenger seat;

Remove bolt 3, then remove driver seat;

Remove bolt 4, 5 and 6, then remove tail cover.

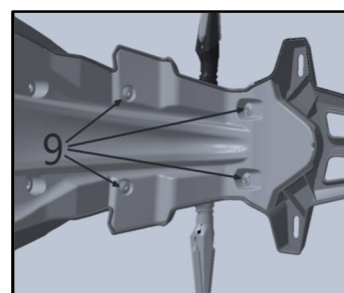
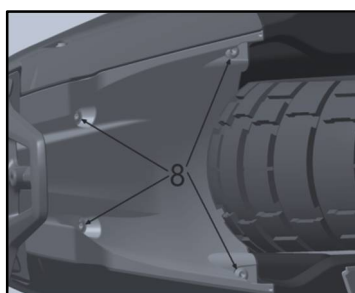
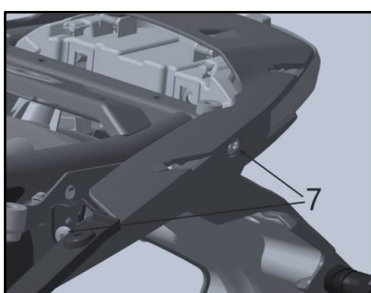
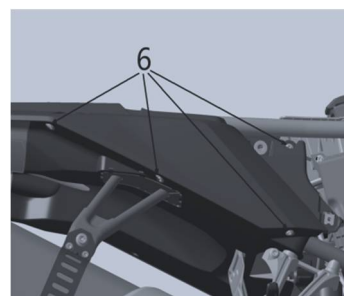
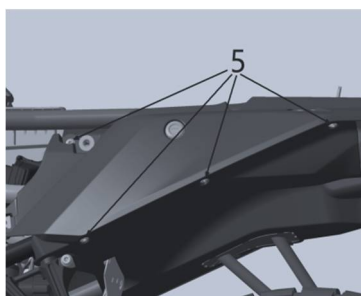
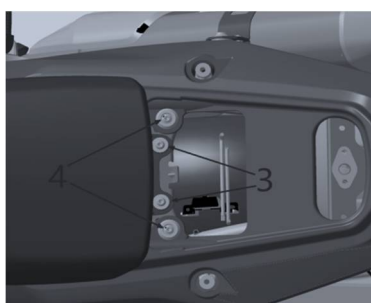
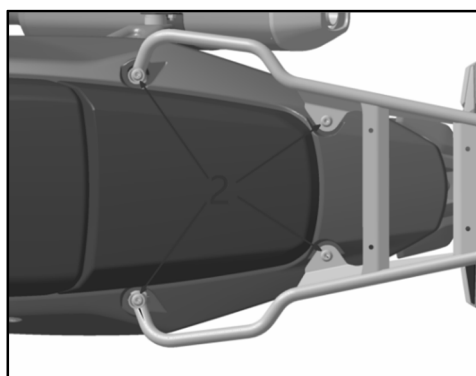
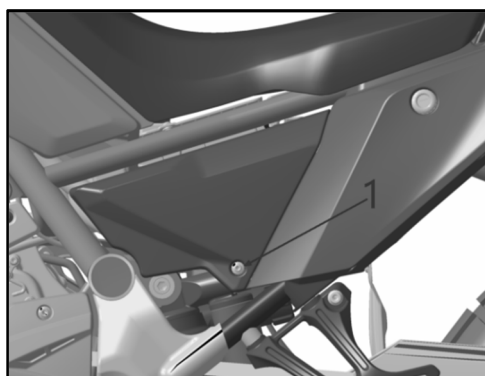
Remove bolt 7 (Left and right side 2 pieces each) and 8, cut off connection of taillight, rear turning signal, and rear registration plate light to wire harness, then remove rear fender kit;

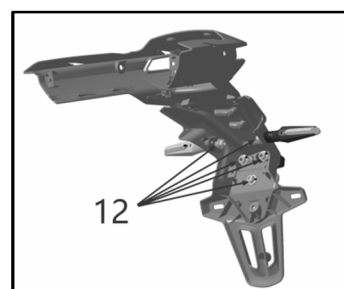
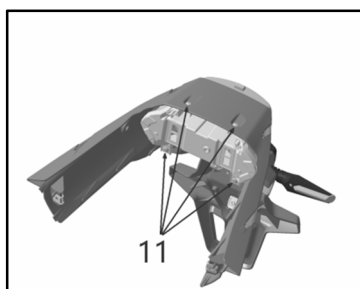
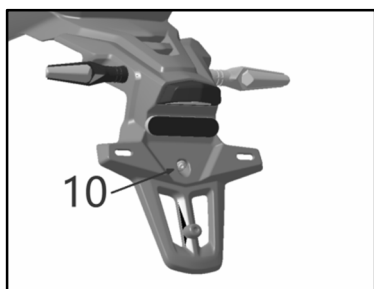
Remove bolt 9 and 10, then remove liner plate of rear fender.

Remove screw 11, then remove taillight;

Remove nut 12, then remove rear turning signal light and rear registration plate light.

The re-assembly is completely opposite to disassembly.





Caution:

Before removing lights, please cut off their connectors between lights wire and wire harness.

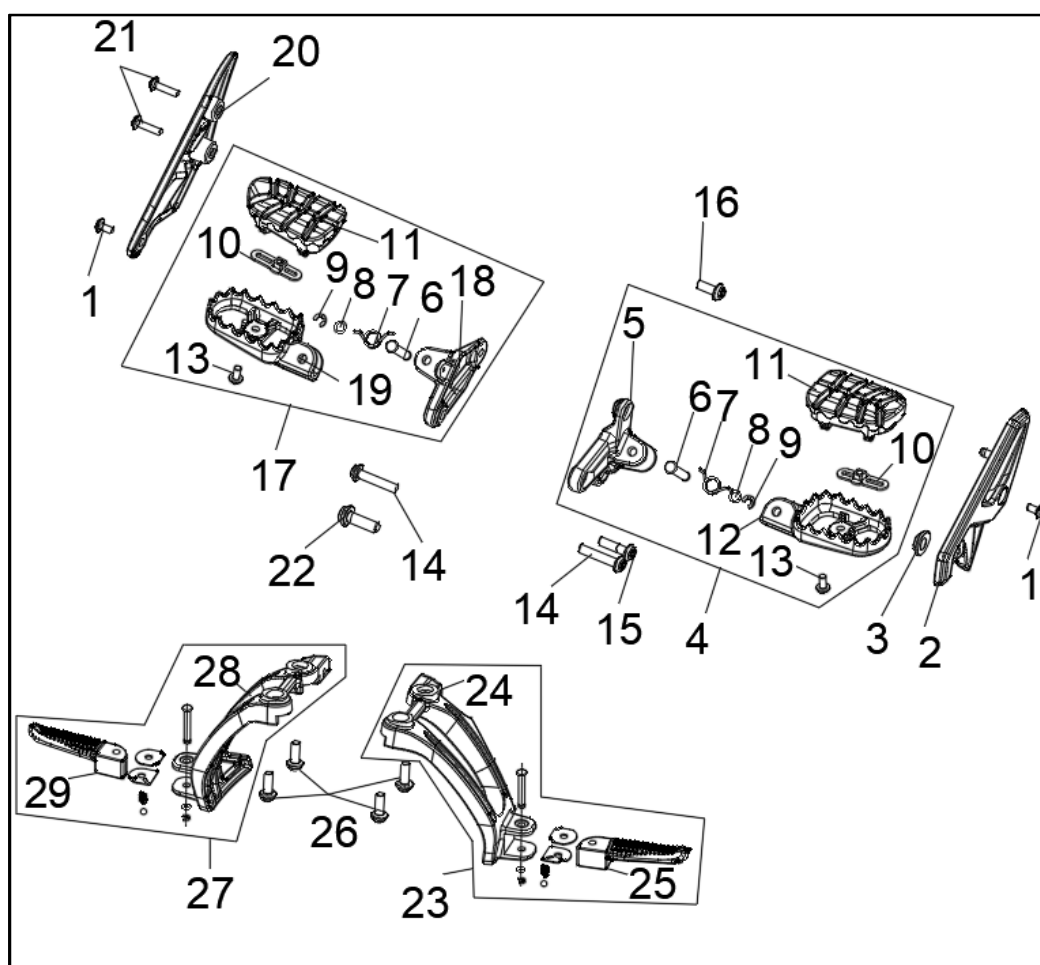
When re-assembling rear turning signal light and registration light, please straighten up wires between rear fender and its liner plate to avoid squeezing.

Parameters:

Bolt torque for rear luggage rack	M8	Nm	22
Socket spline bolt for covering parts	M5	Nm	4.5
	M6	Nm	6
Connection between driver seat to frame rear end	M6	Nm	9
Connection between rear fender and taillight	ST4.2	N.m	1
Connection between rear fender and taillight	ST4.2	N.m	1
Registration light nut	M5	N.m	2
Turning signal screw	M10	N.m	4

14. Disassembly, re-assembly and maintenance for main footrest and pillion step kit

Main footrest, pillion step kit and their parts



1	Socket spline bolt	EA	2
2	Left lower side cover	EA	1
3	Collar	EA	1
4	Left main footrest	EA	1
5	Bracket of left main footrest	EA	1
6	Pin shaft	EA	2
7	Twist spring	EA	2
8	Seal ring	EA	2
9	Split circlip	EA	2

10	Limit piece of main footrest rubber	EA	2
11	Main footrest rubber	EA	2
12	Left main footrest	EA	1
13	Socket hex. spline bolt	EA	1
14	Socket hex. spline bolt	EA	2
15	Socket hex. spline bolt	EA	1
16	Socket hex. spline bolt	EA	1
17	Right main footrest kit	EA	1
18	Bracket for right main footrest	EA	1
19	Right main footrest body	EA	1
20	Socket hex. spline bolt	EA	1
21	Right lower side cover	EA	1
22	Socket spline bolt	EA	2
23	Left pillion step kit	EA	1
24	Bracket for left pillion step	EA	1
25	Left pillion step	EA	1
26	Socket hex. spline bolt	EA	4
27	Right pillion step	EA	1
28	Bracket for right pillion step	EA	1
29	Right pillion step	EA	1

Removal for left and right footrest and step pillion

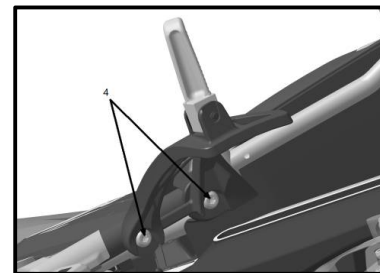
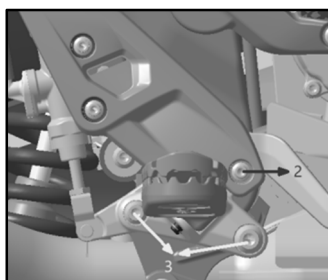
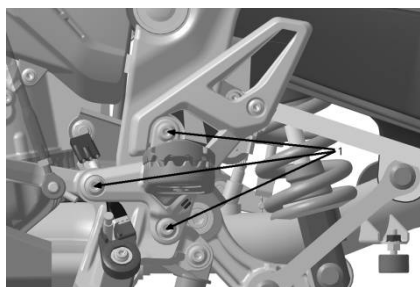
Keep motorcycle upright by parking stand.

Remove bolt 1 by tool, then remove left main footrest.

Remove bolt 2 and 3, then remove right main footrest.

Remove bolt 4, finally remove left and right step pillion.

The re-assembly is completely opposite to disassembly.

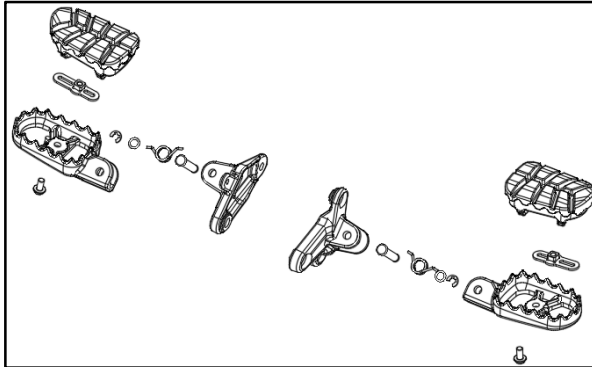


Parameters:

Mounting torque for main footrest and step pillion	M8	N.m	22
Mounting torque for footrest	M10	N.m	45

Removal for left and right main footrest

Break down left and right main footrest as figure below.



Caution:

Please coat mounting bolt with Loctite when re-assembling footrest rubber.

When re-assembling step pillion, please coat turning place with lithium lubricant.

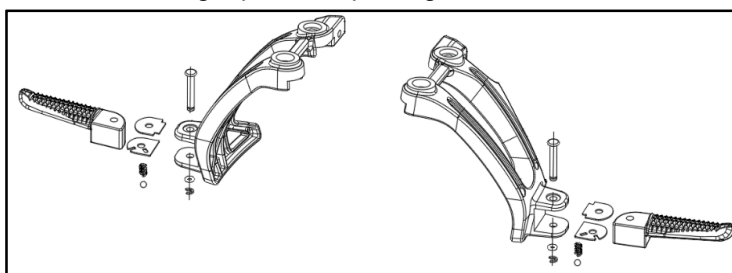
When re-assembling rear brake pedal, please coat turning shaft of brake pedal with lithium lubricant.

Parameters:

Lithium lubricant	g	10
Loctite	g	5

Removal for left and right pillion step

Break left and right pillion step as figure below.



Caution:

When re-assembling pillion step, please coat turning place with lithium lubricant.

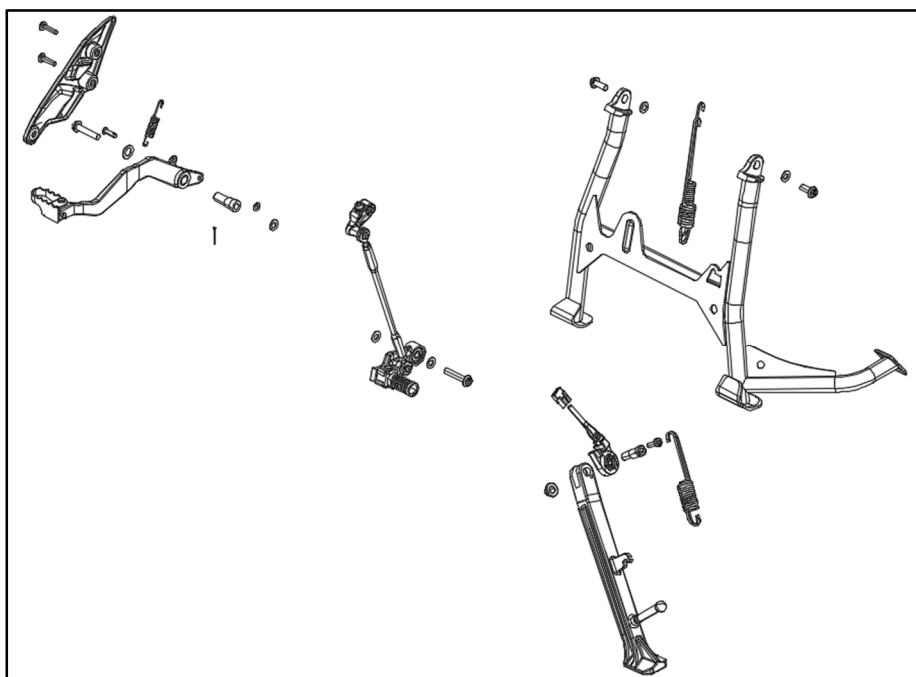
When re-assembling limit piece, spring and steel ball of pillion step, please coat their surfaces and places of spring with lithium lubricant.

Parameters:

Lithium lubricant	g	10
-------------------	---	----

15. Disassembly, re-assembly and maintenance for side stand, main stand, gearshift and brake pedal

Side stand, main stand, gearshift pedal, brake pedal and their parts



1	Metallic locking nut	EA	1
2	Side stand	EA	1
3	Tension spring	EA	1
4	Hex. shoulder bolt	EA	1
5	Kill switch of side stand	EA	1
6	Socket spline bolt	EA	2
7	Flat washer	EA	2
8	Pin shaft	EA	1
9	Tension spring	EA	1
10	Right lower side cover	EA	
11	Main stand	EA	1
12	Socket hex. bolt	EA	2
13	Socket hex. bolt	EA	2
14	Socket hex. bolt	EA	1

15	Flat washer	EA	1
16	Gearshift pedal	EA	1
17	Flat washer	EA	1
18	Flat washer	EA	3
19	Tension spring	EA	1
20	Rear brake pedal	EA	1
21	Split pin	EA	1
22	Threaded sleeve	EA	1

Disassembly and re-assembly for side and main stand

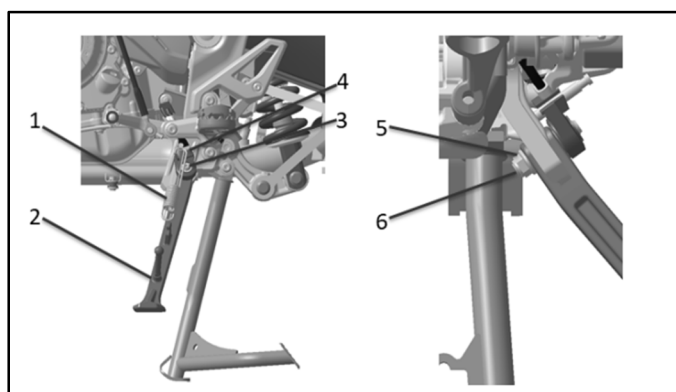
Keep motorcycle by parking stand.

Remove tension spring of side stand by tool.

Remove bolt 3 then remove kill switch 4 of side stand.

Remove hex. nut 6, then remove shoulder bolt 5.

Remove side stand 2.



The re-assembly is completely opposite to disassembly.

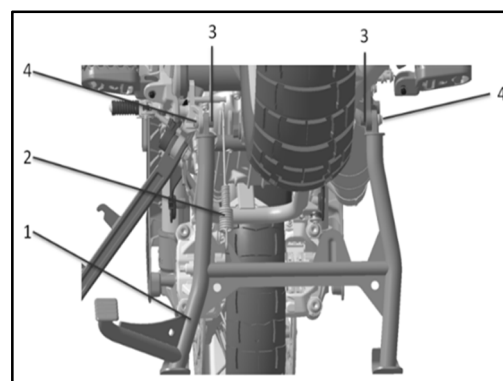
Keep motorcycle upright by parking stand.

Remove tension spring 2 of main stand by tool.

Remove 2 pieces of bolt 4.

Remove main stand 1.

The re-assembly is completely opposite to disassembly.



Important:

Coat the turning place with lithium lubricant when re-assembling side and main stand.

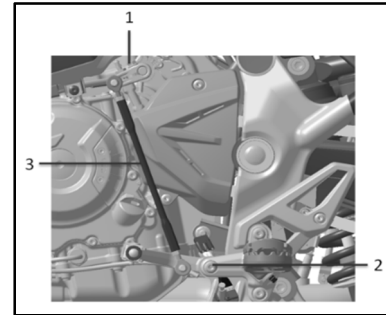
The re-assembly for main and side stand needs tool for this work only to avoid damage when hanging it and re-assembling.

Parameters:

Torque for shoulder bolt of side stand	M10	Nm	20
Torque for side stand nut	M10	Nm	40
Torque for kill switch of side stand	M6	Nm	6
Torque for nut of main stand	M8	Nm	22
Lithium lubricant		g	5

Disassembly and re-assembly for gearshift pedal

Keep motorcycle upright by parking stand.
 Remove bolt 1 by tool, then remove spline kit.
 Remove bolt 2 by tool, then remove gearshift arm kit, finally remove the pedal.
 The re-assembly is completely opposite to disassembly.



Caution:

The height of gearshift pedal could be adjusted through loosening nut at upper and lower end of connective rod, when adjusted to suitable height, please fasten the 2 pieces of nut.

Caution:

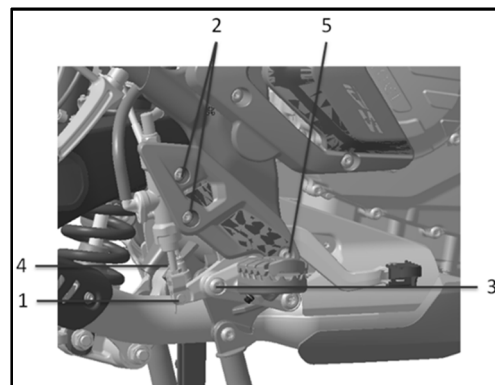
When re-assembling gearshift pedal, its height could be adjusted by adjusting length of connective rod and mounting angle of spline kit, so please confirm if height is suitable when pedal re-assembled.

Parameters:

Torque for spline torque	M6	Nm	9
Torque for nut of connective rod	M6	Nm	9
Torque for gearshift arm	M8	Nm	22
Lithium lubricant	/	g	10

Disassembly and re-assembly for rear brake pedal

Keep motorcycle upright by parking stand.
 Remove split pin connecting rear brake pedal and cylinder.
 Remove washer and pin shaft 1.
 Remove bolt 2 connecting rear brake cylinder, then remove mounting bolt 5 for right lower side cover, then remove the cover and tension spring 6.



Remove fastening bolt 3 for rear brake pedal, then remove the pedal.

The re-assembly is completely opposite to disassembly.

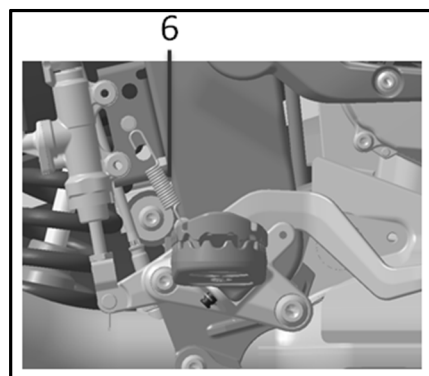
Caution:

Adjust height of brake pedal when nut 4 loosened.

Important:

Adjust height of rear brake pedal, but when adjusted in place, please fasten the nut, otherwise the brake may fail even lead to accident.

When re-assembling split pin connecting rear brake pedal and cylinder, please replace the pin for a new one, the used pin is easy to break up even lead to accident.



Parameters:

Torque for brake pedal	M8	Nm	22
Torque for rear brake cylinder	M6	Nm	6
Torque for rear brake and right main footrest	M6	Nm	6
Lithium lubricant	/	g	10