

# Service Manual

**LX125T-42**

**LXMT-WX-003**



## **Preface**

As a growing variety of motorcycle models are being released, new structures and technologies are continually being adopted. To assist the many Loncin product users and maintenance personnel in better understanding the maintenance, adjustment, and repair techniques for the LX125T-42 motorcycle, we have compiled this service manual. We hope that this manual will provide valuable guidance and convenience in maintenance practices for Loncin users and technicians, making it easier for them to reference.

All information, charts, data, and performance specifications contained in this manual represent the latest product information available at the time of its release. Loncin General Power Co., Ltd. reserves the right to modify this manual at any time without prior notice. Any part of this manual is the property of Loncin General Power Co., Ltd., and no organization or individual may reproduce it without the company's written consent.

## Contents

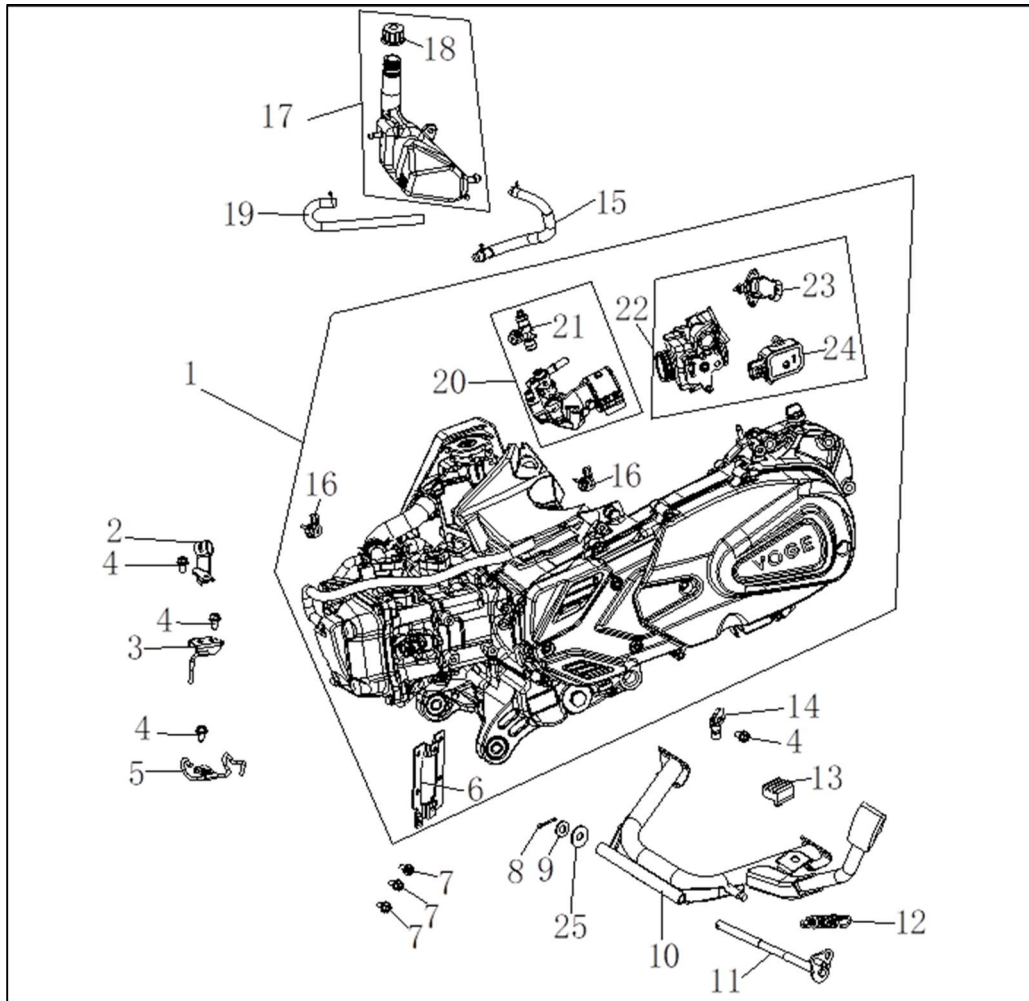
<b>I. Removal and Maintenance of Engine.....</b>	<b>1</b>
Engine Assembly and Components.....	1
Removing the Engine.....	2
Filling the engine with oil.....	3
<b>II. Removal and Maintenance of Handlebar Assembly.....</b>	<b>5</b>
Handlebar Assembly and Components .....	5
Removing and Reinstalling the Handlebar Assembly.....	5
Removing the Throttle Cable .....	7
<b>III. Removal and Maintenance of Air Filter Assembly.....</b>	<b>8</b>
Air Filter Assembly and Components .....	8
Removing and Reinstalling the Air Filter Assembly .....	8
Removing and Reinstalling the Air Filter Element .....	9
Removing and Reinstalling the Throttle .....	10
<b>IV. Removal and Maintenance of Exhaust Assembly .....</b>	<b>12</b>
Exhaust Assembly and Components.....	12
Removing and Installing the Muffler .....	12
<b>V. Removal and Maintenance of Fuel Tank Assembly.....</b>	<b>14</b>
Fuel Tank Assembly and Components .....	14
Removing the Fuel Tank Assembly.....	14
Removing the Fuel Pump.....	15
Removing the Fuel Evaporation Control Assembly.....	16
Block Diagram Showing Connection of the Fuel Evaporation Control Assembly .....	17
How the Fuel Evaporation Control System Works.....	17
<b>VII. Removal and Maintenance of Heat Dissipation System .....</b>	<b>18</b>
Heat Dissipation System and Components .....	18
Checking the Coolant.....	19
Replacing the Coolant.....	19
Adding Coolant.....	20

<b>VIII. Removal and Maintenance of Front Wheel Assembly .....</b>	<b>21</b>
Front Wheel Assembly and Components .....	21
Removing the Front Wheel .....	21
Removing the Front Brake Disc .....	23
Removing the Front Tire .....	23
Remove the Front Wheel Bearing and Oil Seal .....	23
<b>IX. Removal and Maintenance of Front Fork Assembly .....</b>	<b>24</b>
Front Fork Assembly and Components .....	24
Removing the Front Fork .....	25
Assessing the Play in the Steering Bearings .....	26
<b>X. Removal and Maintenance of Rear Wheel Assembly .....</b>	<b>27</b>
Rear Wheel Assembly and Components .....	27
Removing the Rear Wheel.....	27
Removing the Rear Brake Disc.....	28
Removing the Rear Tire .....	29
Removing the Rear Wheel Bearing and Oil Seal .....	29
<b>XI. Removal and maintenance of rear suspension assembly.....</b>	<b>30</b>
Rear Suspension Assembly and Components.....	30
Removing the Rear Shock Absorber.....	30
<b>XII. Removal and Maintenance of Brake System.....</b>	<b>31</b>
Braking System and Components.....	31
Replacing the Front Disc Brake Pad .....	32
Replacing the Rear Disc Brake Pads .....	33
Checking the Disc Brake Pads .....	33
Checking the Front and Rear Brake Systems for Brake Fluid Level.....	34
Replacing the Front Disc Brake Fluid .....	35
Replace the rear disc brake fluid.....	36
Replacing the ABS and Parts of the Front and Rear Brake Lines.....	37
Removing the Front Wheel Speed Sensor.....	38

<b>Removing the Rear Wheel Speed Sensor .....</b>	<b>39</b>
<b>XIII. Removal and Maintenance of Lamps .....</b>	<b>40</b>
<b>Headlamp Assembly and Components.....</b>	<b>40</b>
<b>Removing the Headlamp .....</b>	<b>41</b>
<b>Removing the Front Position Lamp .....</b>	<b>41</b>
<b>Removing the Left and Right Turn Signal Lamps .....</b>	<b>43</b>
<b>Rear Lamp Assembly and Components .....</b>	<b>43</b>
<b>Removing the Rear Lamp .....</b>	<b>43</b>
<b>Removing the Rear License Lamp .....</b>	<b>44</b>
<b>XIV. Removal and Maintenance of Main and Secondary Footrest Assemblies .....</b>	<b>46</b>
<b>Main and Secondary Footrest Assemblies and Components .....</b>	<b>46</b>
<b>Removing the Main Footrest (Footboard).....</b>	<b>46</b>
<b>Removing the Left and Right Secondary Footrests .....</b>	<b>47</b>
<b>XV. Removal and Maintenance of Side Stand and Center Stand.....</b>	<b>48</b>
<b>Side Stand and Center Stand Assemblies and Components .....</b>	<b>48</b>
<b>Removing the Side Stand and Center Stand .....</b>	<b>48</b>

## I. Removal and Maintenance of Engine

### Engine Assembly and Components

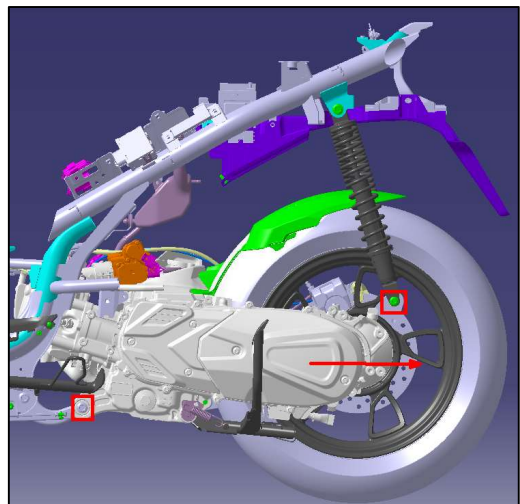
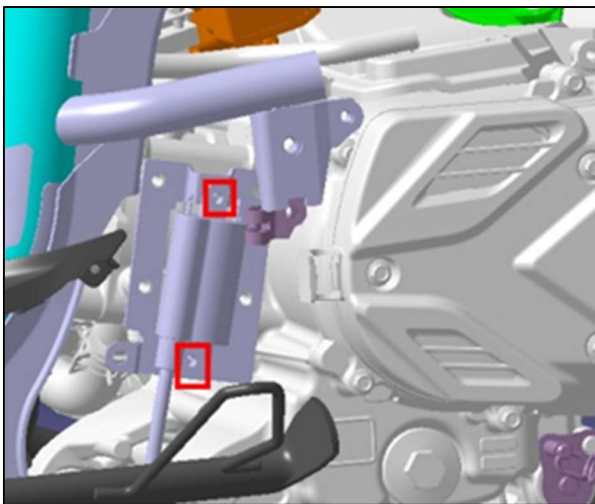


1	Engine assembly	set	1
2	Exhaust pipe support	no.	1
3	Exhaust pipe support	no.	1
4	Hex head flange bolt	no.	4
5	Exhaust pipe support	no.	1
6	Ignition coil support	no.	1
7	Hex head flange bolt	no.	3
8	Cotter pin	no.	1
9	Flat washer	no.	1
10	Center stand	no.	1
11	Shaft	no.	1
12	Tension spring	no.	1
13	Center stand rubber pad	no.	1
14	Throttle cable holder	no.	1
15	Coolant pipe	no.	1
16	Pipe clip	no.	2

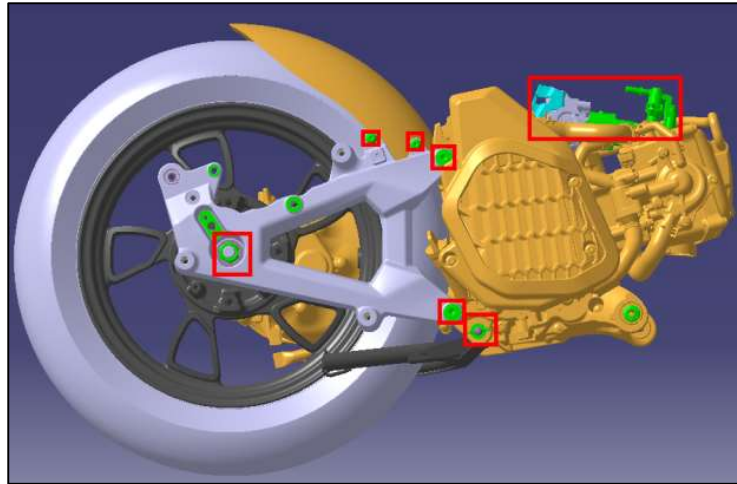
17	Cooling coolant tank	no.	1
18	Tank cap	no.	1
19	Vent tube	no.	1
20	Intake duct	no.	1
21	Fuel injector	no.	1
22	Throttle assembly	no.	1
23	Idle speed control valve	no.	1
24	Sensor	no.	1

## Removing the Engine

1. Place the vehicle upright on its center stand.
2. Remove the seat cushion, trunk box and air filter following the steps described in Section III: Removal and Maintenance of Air Filter.
3. Remove the left and right rear footpegs, left and right guard plates and muffler following the steps described in Section IV: Removal and Maintenance of Muffler.
4. Remove the luggage rack and left and right vehicle bodies following the steps described in Section XIII: Removal and Maintenance of Rear Lamp.
5. Check all the cables connected to the engine, remove the cable ties and unplug the connectors.
6. Remove the rear throttle cable following the steps described in Section II: Removal and Maintenance of Throttle Cable.
7. Remove the rear disc brake caliper following the steps described in Section XII: Removal and Maintenance of Brake System.
8. Find the ignition coil on the left side of the engine, unscrew the ignition coil bolt, and remove the ignition coil.
9. Remove the bolts from the lower mounting points of the rear shock absorbers on both sides and the bolts from the engine bracket, and pull out the engine and rear wheel backward together.



10. Unscrew the connecting bolts between the intake pipe and the engine, and remove the intake pipe and throttle.
11. Remove the rear shock absorber connector and rear wheel following the steps described in Section XIII: Removal and Maintenance of Rear Wheel.
12. Remove the center stand following the steps described in Section XV: Removal and Maintenance of Center Stand.
13. The engine is now removed.



14. Reinstall the components in the reverse order of removal.

**NOTE:**

- When removing the engine, use special tools to prevent personal injury, as the engine is quite heavy.

**IMPORTANT:**

- Dispose of drained coolant in an environmentally sound manner.
- Refer to the section on coolant replacement when refilling the coolant tank.
- When reassembling, ensure that the wiring harness is secured back to its original position before disassembly, and take into full consideration factors such as waterproofing, interference, and heat damage.

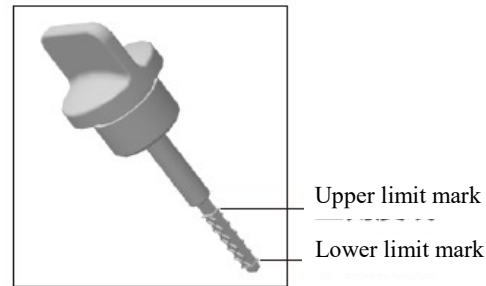
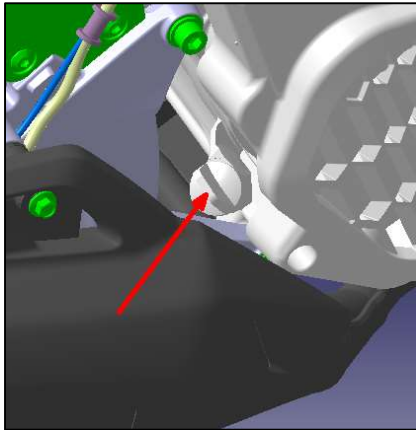
Fastener tightening torque values:

Rear bolt, engine bracket	M10	Nm	40
Lower mounting bolt, rear shock absorber	M8	Nm	30
Socket head cap screw, rear shock absorber connector	M10	Nm	40
Rear right fastening bolt, engine	M12	Nm	75
Socket head cap screw	M6	Nm	9
Lock nut, rear wheel	M16	Nm	120

## Filling the engine with oil

1. Place the vehicle upright on its center stand.
2. Remove the oil dipstick from the rear right side of the engine with a tool.
3. Pour in engine oil.
4. Put the oil dipstick back in place.
5. Start the engine and let it idle until the cooling fan operates, then continue idling for one minute.
6. Stop the engine and wait for one minute to ensure the oil returns to the sump.
7. Remove the dipstick, wipe it clean, then reinsert it and turn it a full circle. Take it out and check if the oil level is between the upper and lower limit marks. If the oil level is not within the specified range, repeat the above steps and add or remove oil until the oil level is within the upper and lower limit marks.



**NOTE:**

- If the oil level is above the line mark, excess oil can be removed using a special tool from the oil filler neck.

**IMPORTANT:**

- After adding oil, the vehicle must be started and idled for 30 seconds before checking the oil level.
- The vehicle should be kept in a vertical position when checking the oil level; otherwise, it will not provide an accurate reading. The oil level must be within the dipstick markings, as both too much and too little oil can damage the engine and compromise safety.

Fastener tightening torque values:

Engine oil capacity	L	0.9
Recommended engine oil	10W/40 SL and above	

## Changing Engine Oil

The engine oil should be changed at the end of each maintenance period. This should be done while the engine is warm to ensure that the old oil drains out more thoroughly.

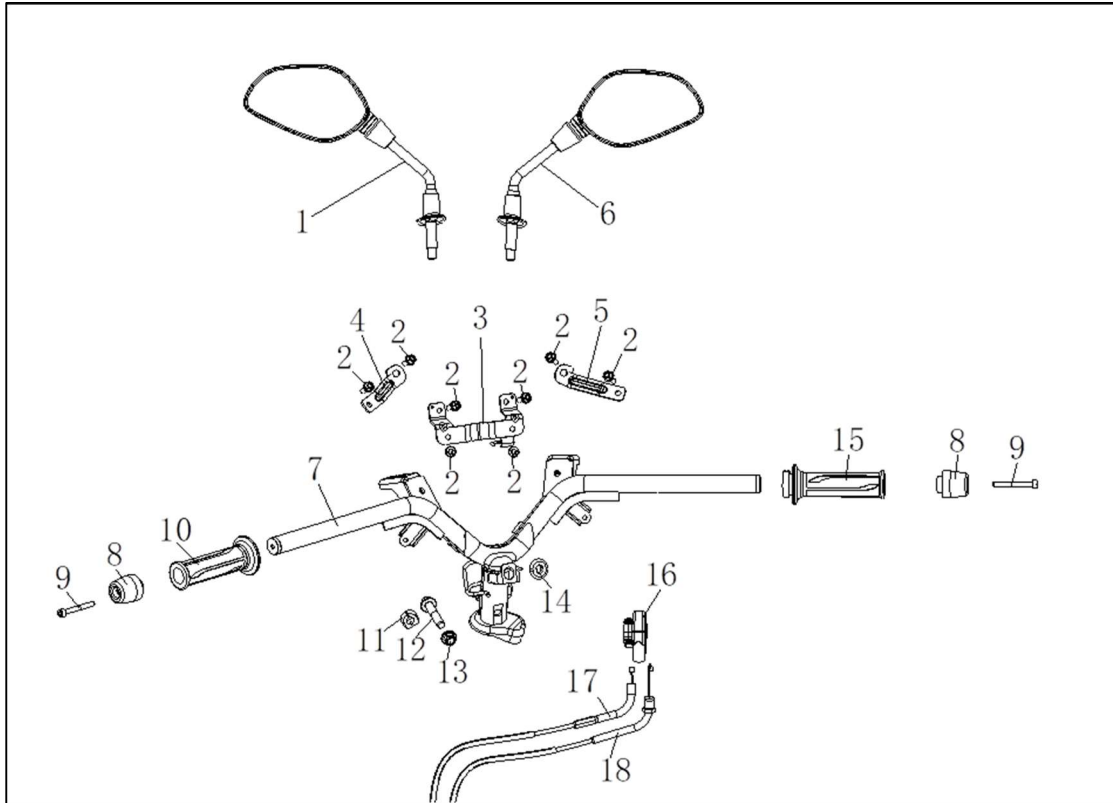
1. Place the vehicle upright on its center stand.
2. Place a drain pan under the oil drain, and then unscrew the oil drain bolt from the bottom of the engine. Gently turn and slowly remove the bolt to prevent oil from spurting out.
3. Allow the oil to drain completely for a period of time, and then reinstall the drain bolt.
4. Remove the dipstick and add new oil, and then check the oil level with the dipstick to ensure it is appropriate.

**NOTE:**

- Although draining old oil when the engine is warm is more thorough, the engine oil and exhaust system can cause burns. Please wait until the drain bolt and exhaust system have cooled down before proceeding with the oil change.

## II. Removal and Maintenance of Handlebar Assembly

### Handlebar Assembly and Components



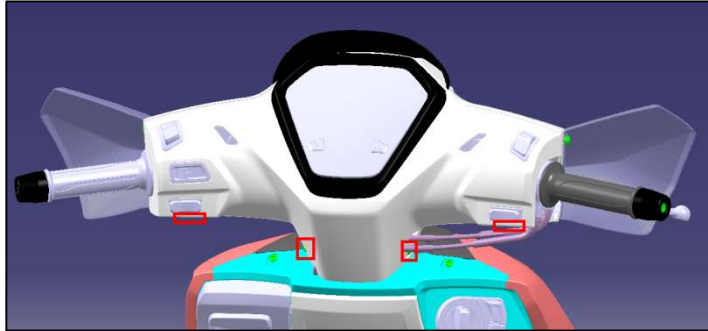
1	Left rearview mirror	no.	1
2	Hex head flange bolt	no.	6
3	Headlamp connecting plate	no.	1
4	Left headlamp mounting bracket	no.	1
5	Right headlamp mounting bracket	no.	1
6	Right rearview mirror	no.	1
7	Handlebar assembly	no.	1
8	Trim head	no.	2
9	Socket head cap screw	no.	2
10	Handle grips	no.	1
11	Steering column spacer	no.	1
12	Hex head flange bolt	no.	1
13	All-metal hex flange lock nut	no.	1
14	Rubber I-ring	no.	1
15	Throttle	no.	1
16	Throttle base	no.	1
17	Throttle cable	no.	1
18	Throttle cable	no.	1

### Removing and Reinstalling the Handlebar Assembly

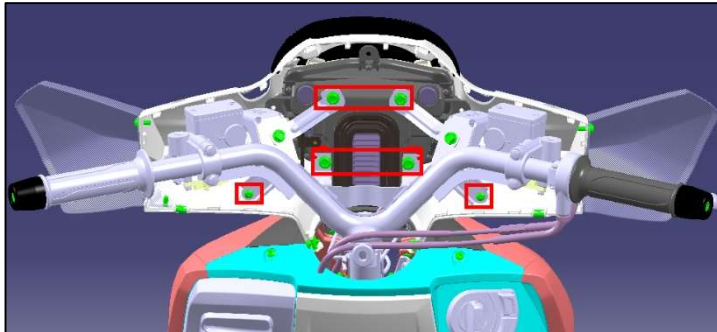
1. Place the vehicle upright on its center stand.
2. Remove the screws from the instrument housing, unplug the cable and remove the

instrument housing.

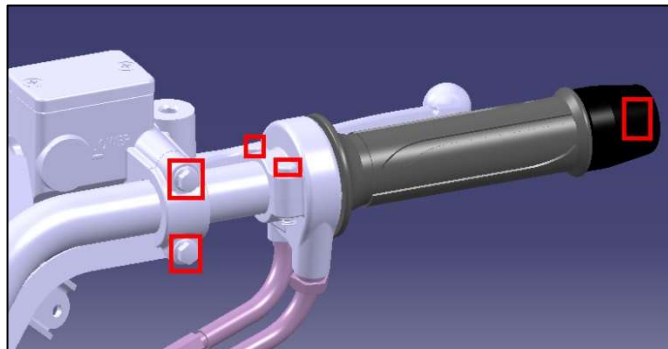
3. Remove the bolts and screws from the windshield and stay bar, remove the windshield and stay bar, and then unscrew the left and right rearview mirrors.



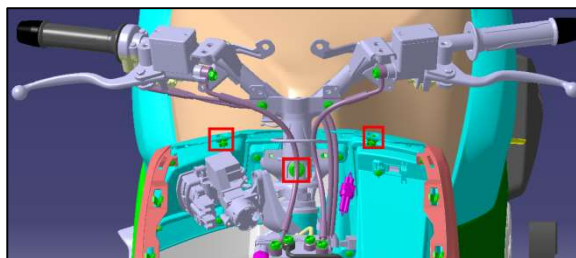
4. Remove the connecting bolts between the handlebar and the air deflector, and remove the air deflector.



5. Unscrew the bolts and remove the trim head, throttle base, hand grip and left and right brake levers in turn.



6. Remove the two screws from the front panel, remove the front panel, and then remove the bolts from the handlebar and steering column.



7. Remove the ABS oil pipe and throttle cable from the handlebar cable clip, and take off the handlebar.
8. Reinstall the parts in the reverse order of removal.

**NOTE:**

- When reinstalling the left and right brake levers, ensure they align with the corresponding locating holes in the handlebar before tightening the brake lever bolts.

**IMPORTANT:**

- After reinstallation, check the rotational clearance between the handle and the throttle. Verify that the angle of the handlebar is reasonable by turning it to both the extreme left and right positions. Look for any interference between the handlebar, cables, or nearby components. Make any necessary adjustments to avoid potential safety risks.
- When reinstalling the rearview mirror, readjust its angle to ensure a clear and safe field of view.

Fastener tightening torque values:

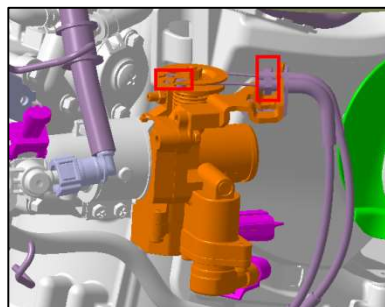
Torque for self-tapping screws on exterior components	Nm	ST4.2	2
Torque for tightening handlebar bolts	Nm	M6	9
Torque for tightening the steering column lock nut	Nm	M10	35
Torque for securing the handlebar trim head	Nm	M6	9

## Removing the Throttle Cable

1. Place the vehicle upright on its center stand.
2. Remove the throttle base and the front end of the throttle cable following the steps described in Section II: Removal and Maintenance of Handlebar.
3. Remove the cover and loosen the cable tie following the steps described in Section V: Removal and Maintenance of Fuel Tank.
4. Remove the bolts from the throttle cable holder.



5. Remove the bolt from the throttle bracket, rotate the cable disc and remove the rear end of the throttle cable.



6. Finally pull out the cable.
7. Replace the throttle cable with a new one of the same size.

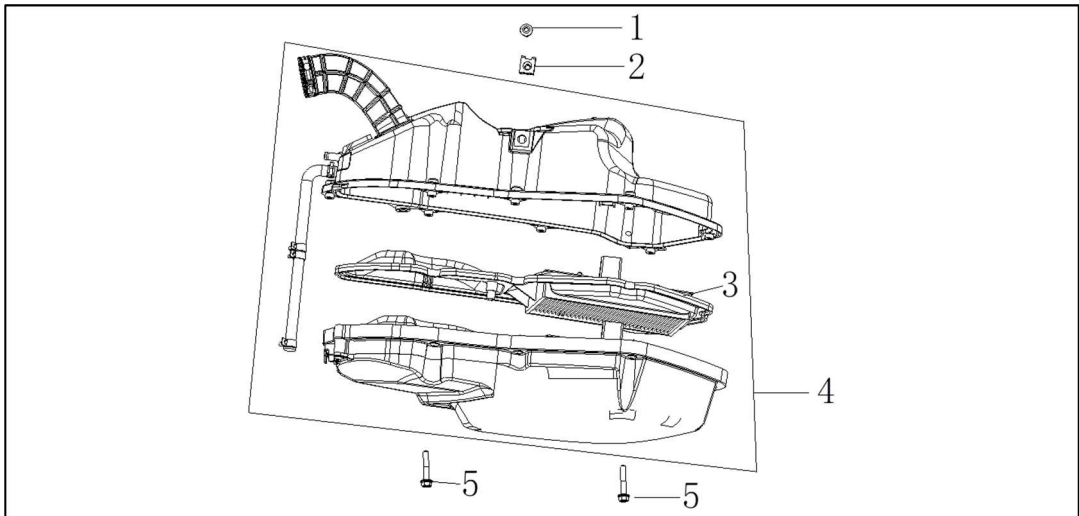
8. Reinstall the parts in the reverse order of removal.

**NOTE:**

- When reinstalling the throttle cable, ensure that the cable routing matches its original configuration prior to disassembly; otherwise, the throttle cable may not operate smoothly.
- After reassembly (before installing any covering parts), repeatedly check to confirm that the assembly functions correctly and that there are no sticking or non-return issues by rotating the throttle

### III. Removal and Maintenance of Air Filter Assembly

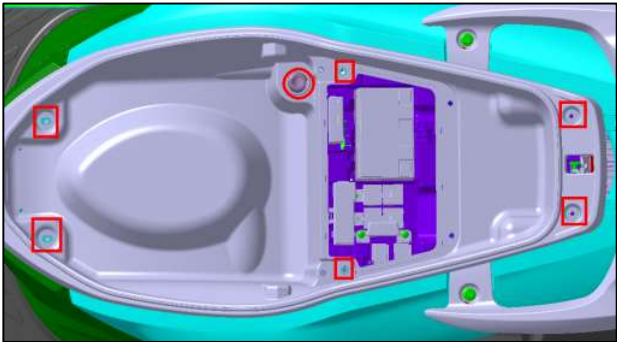
#### Air Filter Assembly and Components



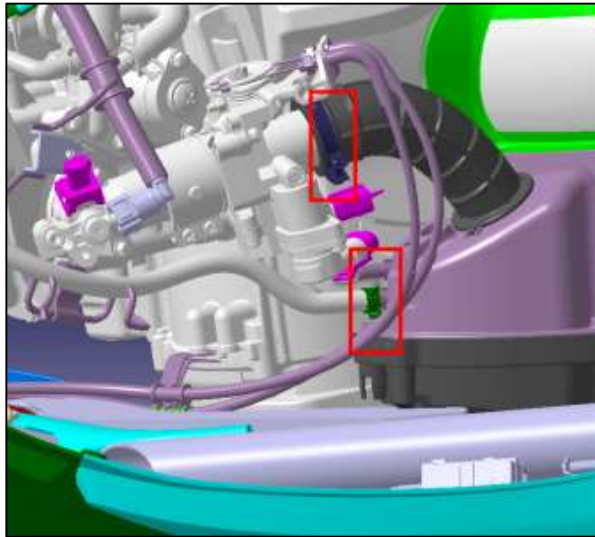
1	Socket head cap screw	no.	1
2	Clip nut	no.	1
3	Air filter element	no.	1
4	Air filter	no.	1
5	Hex head flange bolt	no.	2

#### Removing and Reinstalling the Air Filter Assembly

1. Place the vehicle upright on its center stand.
2. Remove the seat cushion, unscrew the screw from the inner trunk box cover, remove the six bolts and the coolant tank cover, and remove the trunk box.



3. Remove the hoop and clip from each connecting pipe and pull out the connecting pipe.



4. Unscrew the hex socket screw connecting the air filter to the fender.
5. Unscrew the connecting bolt connecting the air filter to the engine.



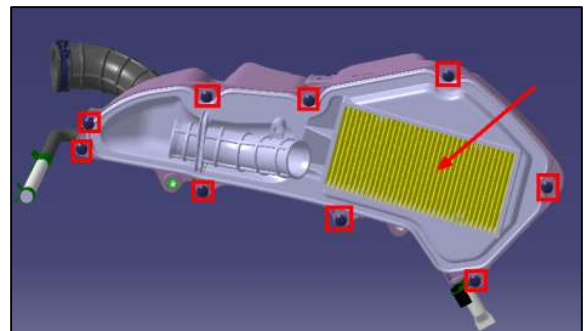
6. Remove the air filter.
7. Reinstall the parts in the reverse order of removal.

## Removing and Reinstalling the Air Filter Element

1. Remove the air filter from the vehicle.
2. Unscrew the screws from the air filter to open the housing.
3. Remove the filter element.
1. Reinstall the parts in the reverse order of removal.

### IMPORTANT:

- It is essential to thoroughly verify that the filter element assembly is correctly installed. Failure to do so may lead to inadequate sealing, allowing dust to enter the engine and potentially shortening its service life.





- If the filter element is damaged, it must be replaced.
- If the filter element is contaminated with oil or grease, it must be replaced.
- If the filter element is visibly wet, it must be replaced.
- Please dispose of the replaced filter elements in a proper and environmentally friendly manner.

#### Fastener tightening torque values:

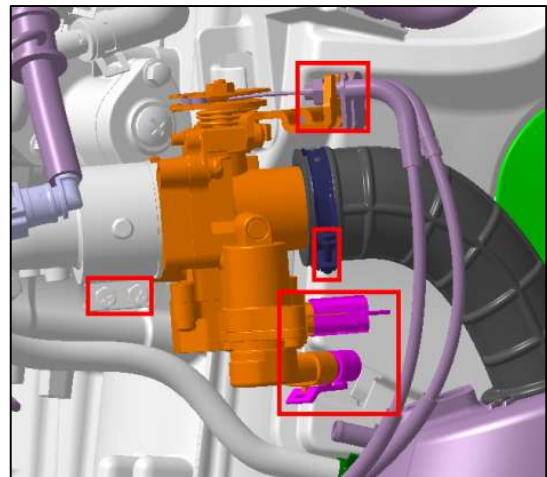
Socket head screws	M6	N.m	9
Bolts fastening the air filter to the frame	M6	N.m	9

### Removing and Reinstalling the Throttle

1. Unplug the connectors from the throttle assembly and pull out fuel pipe assembly and vent tube assembly.
2. Remove the front and rear hoops from the throttle using a tool.
3. Pull out throttle assembly forcefully.
4. Reinstall the parts in the reverse order of removal.

#### IMPORTANT:

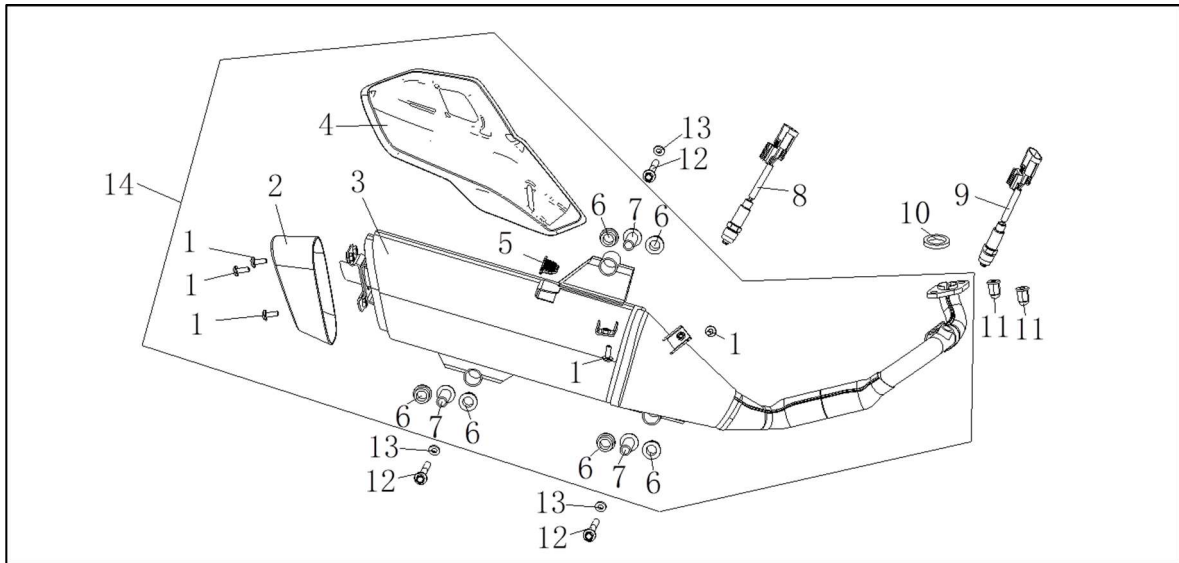
When reinstalling the throttle assembly, it is essential to thoroughly verify that the sealing component between the throttle body and the air filter housing are properly fitted. A loose seal may allow dust from the air to enter the engine, potentially causing damage.



Before reassembly, ensure that the intake manifold of the throttle is cleaned with a special-purpose cleaner and thoroughly dried to maintain optimal engine performance.

## IV. Removal and Maintenance of Exhaust Assembly

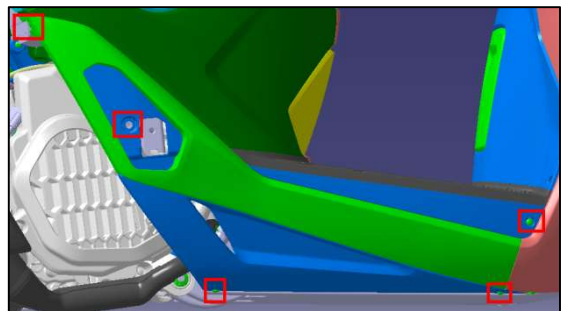
### Exhaust Assembly and Components



1	Socket head cap screw	no.	5
2	Rear muffler cover	no.	1
3	Muffler	no.	1
4	Muffler shield	no.	1
5	Flat rubber cap	no.	1
6	Rubber T-ring	no.	6
7	Flanged washer	no.	3
8	Oxygen sensor	no.	1
9	Oxygen sensor	no.	1
10	Exhaust seal	no.	1
11	Cap nut	no.	2
12	Hex head flange bolt	no.	3
13	Flat washer	no.	3
14	Muffler assembly	no.	1

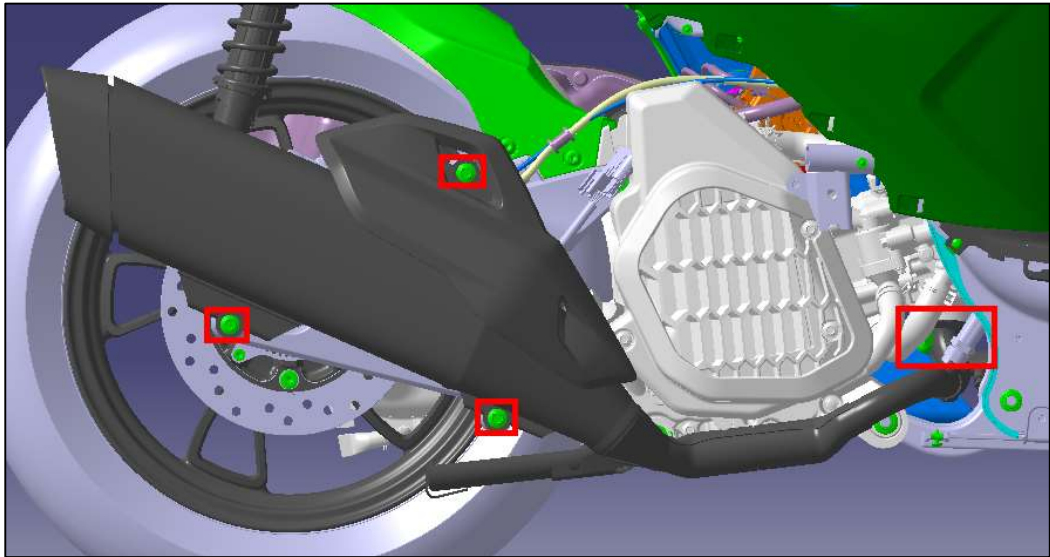
### Removing and Installing the Muffler

1. Place the vehicle upright on its center stand.
2. Unscrew the bolts and remove the right rear footpeg.
3. Unscrew the bolts and screws and remove the right guard plate.
4. Remove the seat cushion and trunk box following the steps described in Section III: Removal and Maintenance of Air Filter.
5. Locate the two oxygen sensors and the cable harness connectors, cut the zip ties securing the oxygen sensors, and disconnect the oxygen sensors from the cable connectors.
6. Use a tool to remove the exhaust port nut located below the front end of the muffler. 6. Use a tool to remove the exhaust nut below the front end of the muffler.





7. Remove the bolts securing the connection between the muffler and the rear shock absorber.
8. Remove the muffler (be careful as the muffler may fall when removing the bolts).
9. Use a special-purpose tool to remove the oxygen sensor.



10. Reinstall the parts in the reverse order of removal.

**IMPORTANT:**

**When reinstalling the muffler, the exhaust seal must be replaced. Using an old seal may lead to poor sealing and exhaust leaks.**

**Wait for the muffler to cool down before removing it to avoid burns.**

**During disassembly, be aware that bolts from the muffler may fall unexpectedly, so take necessary precautions for that.**

**When reinstalling the muffler, first tighten the nut at the exhaust port, and then tighten the mounting bolt at the rear.**

**After reinstallation, start the vehicle and check for any leaks at the sealing points.**

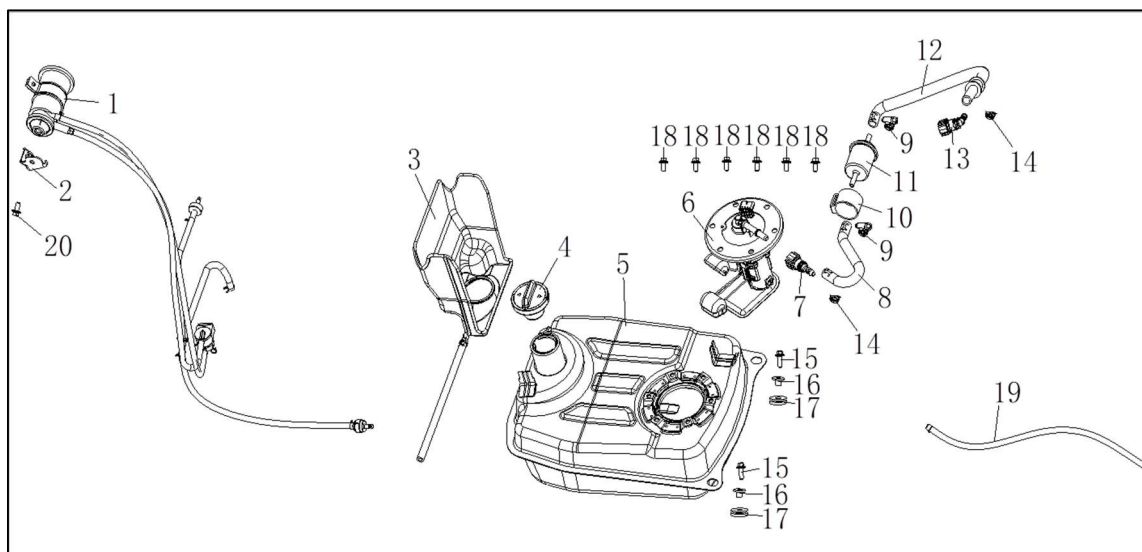
**When reassembling, ensure the oxygen sensor and the main cable are installed in their respective original locations. Incorrect connections can cause faults with the oxygen sensor and the vehicle as well.**

Fastener tightening torque values:

Bolt, rear muffler section	M8	Nm	32
Cap nut	M8	Nm	32
Oxygen sensor	/	Nm	40

## V. Removal and Maintenance of Fuel Tank Assembly

### Fuel Tank Assembly and Components

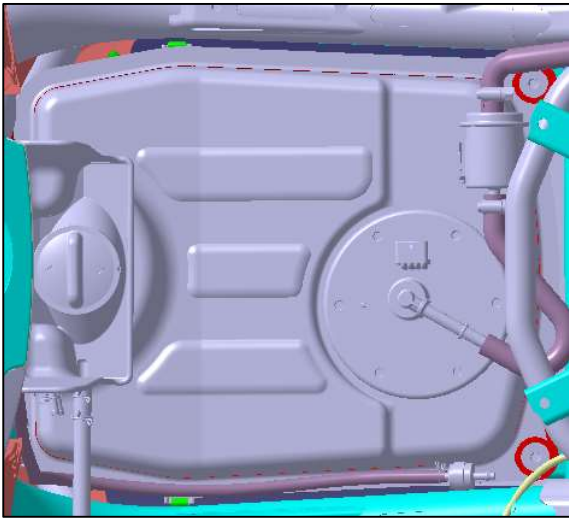


1	Fuel evaporation control assembly	no.	1
2	Carbon canister support	no.	1
3	Rubber fuel filler sleeve	no.	1
4	Fuel tank cap	no.	1
5	Fuel tank	no.	1
6	Electronic fuel pump bracket assembly	no.	1
7	Quick-change connector	no.	1
8	Pipeline	no.	1
9	Clamp assembly	nos.	2
10	Fuel filter rubber sleeve	no.	1
11	Fuel filter	no.	1
12	Fuel hose	no.	1
13	Quick-change connector	no.	1
14	Pipe clip	no.	2
15	Hex head flange bolt	no.	2
16	Sleeve	no.	2
17	Rubber I-ring	no.	2
18	Hex head flange bolt	no.	6
19	Vent tube	no.	1
20	Hex head flange bolt	no.	1

### Removing the Fuel Tank Assembly

1. Place the vehicle upright on its center stand.
2. Remove the left and right rear footpegs and left and right guard plates following the steps described in Section IV.

- Refer to Chapter 14 Main Foot Rest Removal, Remove the seat cushion, trunk box, center joint panel, footboard and middle connecting part.



- Remove the bolts from the rear side of the fuel tank and disconnect all pipes connecting the fuel tank.
- Remove the fuel tank.
- Reinstall the parts in the reverse order of removal.

**NOTE:**

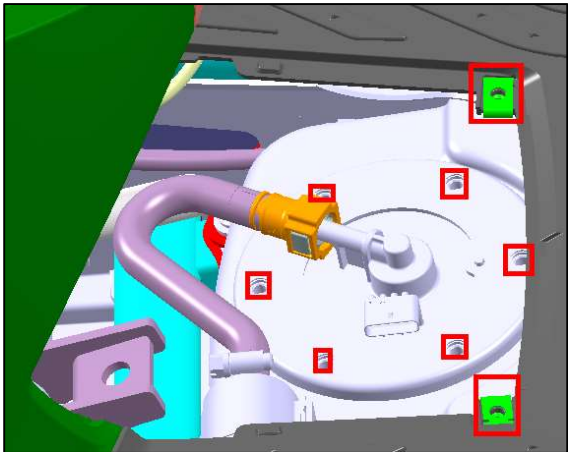
- Given the complexity of many pipes and lines connecting the fuel tank, it is essential to ensure that all components are correctly assembled during reinstallation. Also, care should be taken to avoid excessive bending and compression of the lines.

Fastener tightening torque values:

Fastening bolt, footboard	M6	N.m	9
Self-tapping screws, exterior parts	ST4.2	N.m	2
Rear mounting bolt, fuel tank	M6	N.m	9

**Removing the Fuel Pump**

- Place the vehicle upright on its center stand.
- Remove the two screws from the middle connecting part and take off the cover.
- Unscrew the six bolts fastening the fuel pump, unplug the fuel pump, and remove it.



4. Reinstall the parts in the reverse order of removal.

**NOTE:**

- When removing the fuel pump, carefully inspect the fuel pump filter for cleanliness. If necessary, clean it using fresh fuel, and be sure to rinse it thoroughly several times.

**IMPORTANT:**

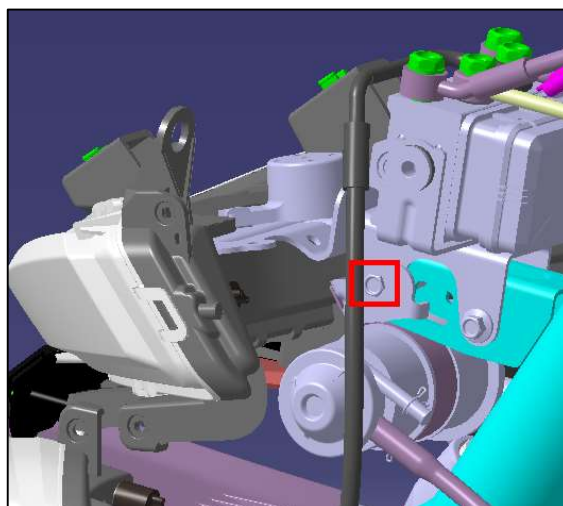
- When reinstalling the fuel pump, it is essential to replace the fuel pump sealing gasket to prevent the risk of fuel leakage. After reassembling the fuel pump, check for proper sealing using specialized pressure measurement equipment.
- Finally, dispose of the replaced fuel pump sealing gasket in an environmentally responsible manner.

Fastener tightening torque values:

Mounting bolt, fuel pump	M6	N.m	9
--------------------------	----	-----	---

## Removing the Fuel Evaporation Control Assembly

1. Remove the oil tank assembly following the steps for removing the fuel pump described above.
2. Remove the front panel following the steps described in Section II: Removal and Maintenance of Handlebar.
3. Unscrew the bolts, and then take out the carbon canister together with the hose connected to it from under the position lamp.
5. Reinstall the parts in the reverse order of removal.



**NOTE:**

- Due to the limited space for the fuel evaporation control assembly and the numerous connecting lines, it is important to note down the routing and layout of the lines before disassembly to ensure correct reassembly.

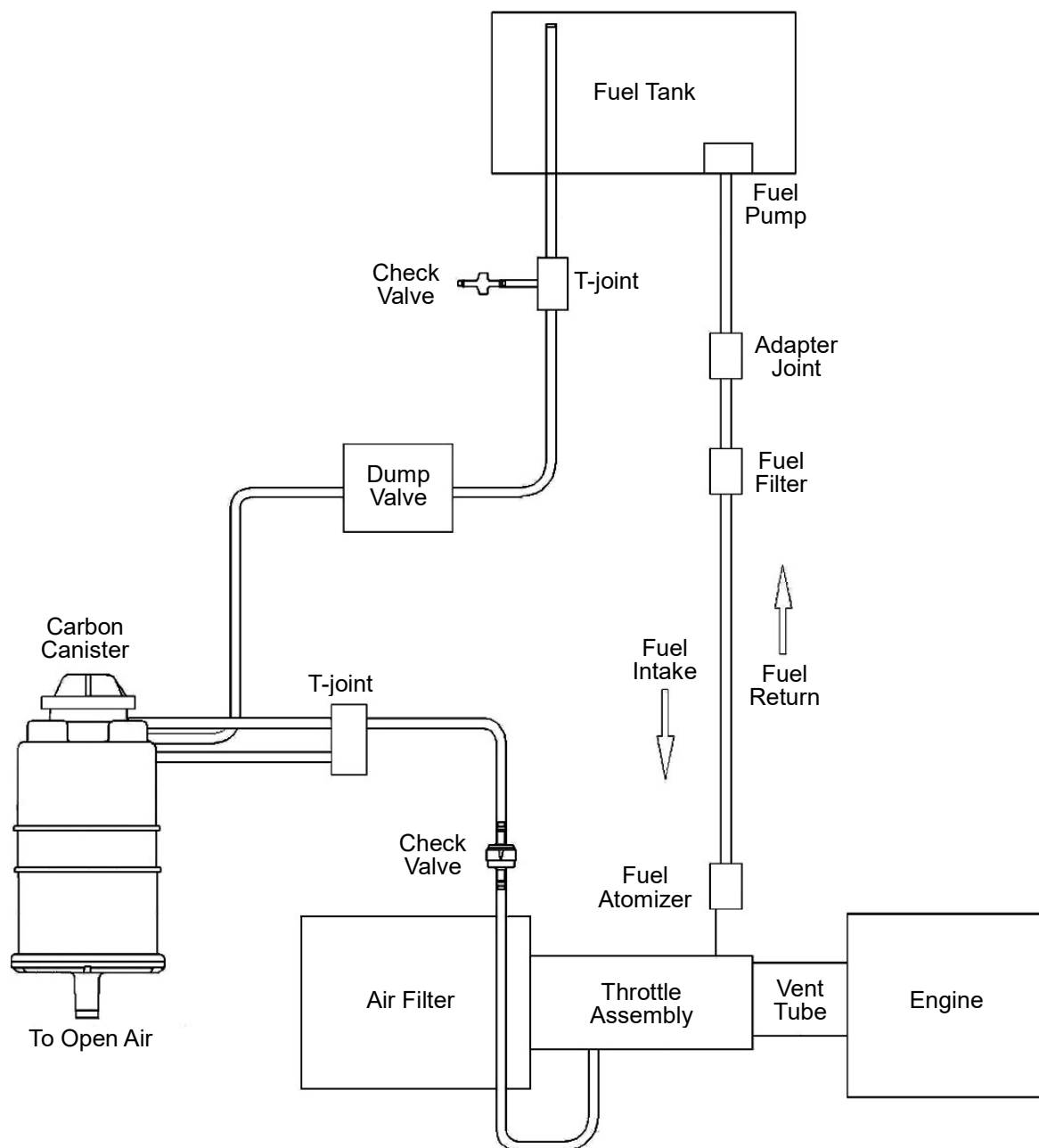
**IMPORTANT:**

- When reinstalling the fuel evaporation control assembly, pay attention to the orientation of the rollover valve. Ensure that this part is installed level with the ground. Otherwise, it may lose its rollover protection function.

Fastener tightening torque values:

Tightening torques for canister bracket	M6	Nm	9
---	----	----	---

## Block Diagram Showing Connection of the Fuel Evaporation Control Assembly

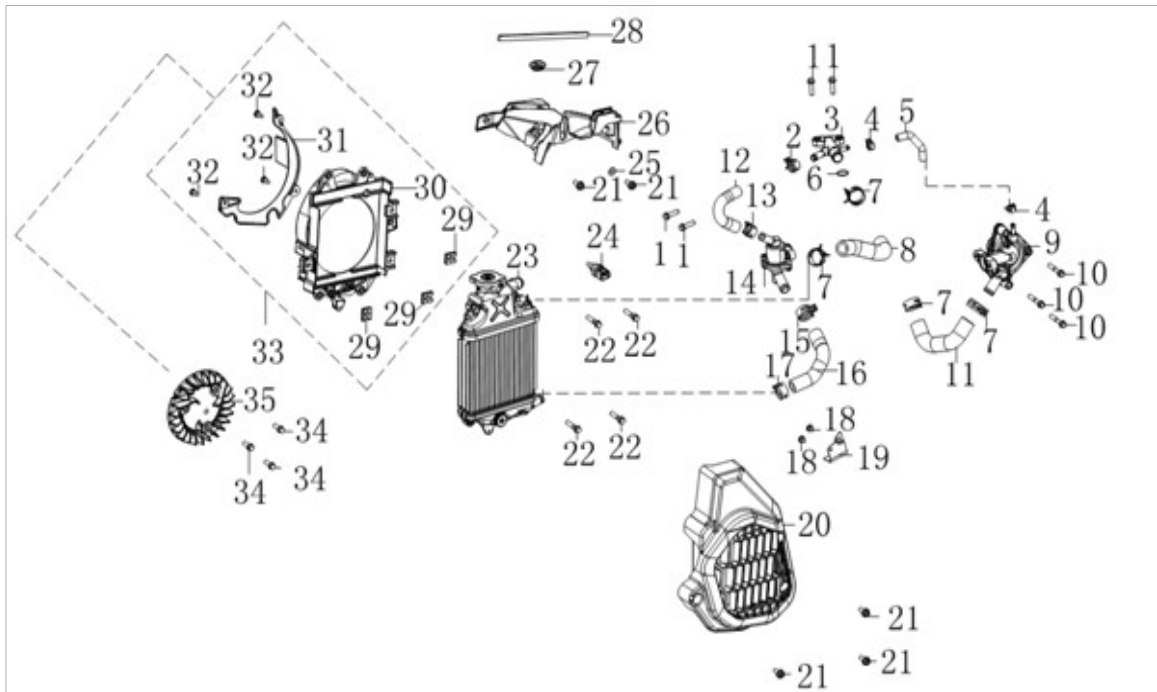


### How the Fuel Evaporation Control System Works

1. When the gasoline in the fuel tank is heated, it evaporates and is absorbed by the carbon canister at the TANK end through the tilt switch.
2. If the vehicle tilts more than 60 degrees, the tilt switch closes, preventing gasoline from flowing to the carbon canister.
3. Fresh air flows from end A of the carbon canister to the PURGE end, carrying fuel vapor to the throttle valve, and then to the engine through the intake manifold to participate in combustion.

## VII. Removal and Maintenance of Heat Dissipation System

### Heat Dissipation System and Components



1	Hex head flange bolt	no.	10
2	Pipe clip	no.	10
3	T-joint	no.	1
4	Pipe clip	no.	10
5	Coolant pipe	no.	1
6	Seal ring	no.	10
7	Pipe clip	no.	10
8	Coolant pipe	no.	1
9	Coolant pump	no.	1
10	Hex head flange bolt	no.	10
11	Coolant pipe	no.	1
12	Coolant pipe	no.	1
13	Pipe clip	no.	10
14	Thermostat	no.	1
15	Pipe clip	no.	10
16	Coolant pipe	no.	1
17	Pipe clip	no.	10
18	Cross-recessed pan head tapping screw	no.	10
19	Cooling coolant pipe support	no.	1
20	Dissipator guard	no.	1
21	Hex head flange bolt	no.	10
22	Hex head flange bolt	no.	10



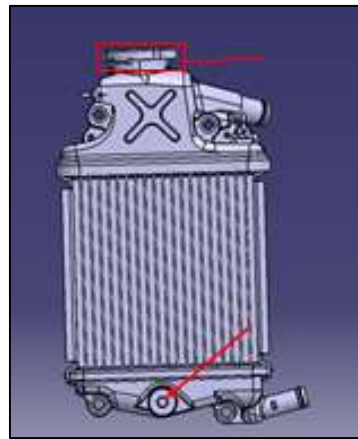
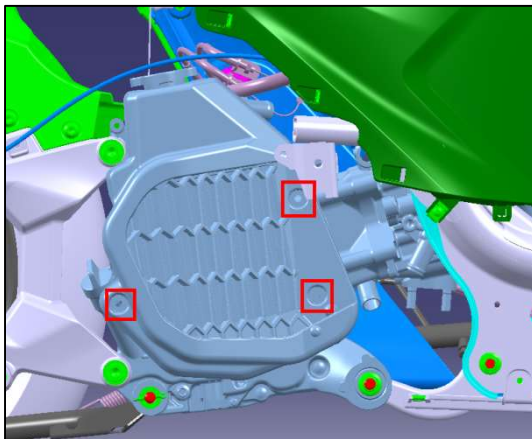
23	Heat dissipator	no.	1
24	Engine sensor	no.	1
25	Flat washer	no.	10
26	Dust cover	no.	1
27	Rubber sleeve	no.	1
28	Sealing strip	no.	1
29	Clip nut	no.	10
30	Heat dissipator support	no.	1
31	Lower heat dissipator bracket	no.	1
32	Cross recessed pan head tapping screw	no.	10
33	Lower heat dissipator bracket assembly	no.	1
34	Hex head flange bolt	no.	10
35	Fan	no.	1
36	Hex head flange bolt	no.	10

## Checking the Coolant

1. Place the vehicle upright on its center stand.
2. Check the coolant refill bottle located at the lower right corner of the seat cushion. The coolant level should be between the upper and lower limit marks. If it is below the lower limit, coolant needs to be added, but the coolant level should not exceed the upper limit either.

## Replacing the Coolant

1. Place the vehicle upright on its center stand.
2. Remove the right rear footpeg, right guard plate and muffler following the steps for removing the muffler.
3. Unscrew the bolts and remove the heat dissipator protecting cover.
4. Remove the coolant filler cap, place a drain pan under the heat dissipator, slowly loosen the drain bolt, wait for the coolant to flow out steadily, and slightly tilt the vehicle to the right until the coolant flows out completely.



5. Reinstall the parts in the reverse order of removal.

### IMPORTANT:

- Collect the discharged coolant in a suitable container and dispose of it in an

environmentally friendly manner.

- When reinstalling, replace the drain plug sealing washer with a new one.

**NOTE:**

- Clean the mating surface of the engine drain plug sealing washer to ensure no contaminants are present.
- After reinstalling the drain bolt, wipe off any residual coolant on components such as the muffler and engine with a piece of cloth.
- After the replacement is done, start the engine and gradually increase the engine speed to check for any leaks in the cooling system.

Coolant specifications:

Coolant capacity		L	0.5
Coolant type	Ethanol-free silicate coolant		LEC-II -40

## Adding Coolant

1. Pour coolant into the heat dissipator filler using a funnel or similar tool until the coolant reaches the filler mouth.
2. Start the engine and let it idle, observing the coolant level at the radiator filler mouth. At this time, the coolant level will drop, so continue to add coolant until the level no longer decreases.
3. Reinstall the filler cap.
4. Use a funnel or similar tool to add coolant to the filler month of the expansion tank, ensuring that the level is within the upper and lower limit marks.
5. Reattach the rubber cap to the filler mouth of the refill tank.
6. Complete the addition of coolant.

**IMPORTANT:**

- Once the replacement is complete, start the vehicle and gradually increase the engine speed to check for any leaks in the cooling system.

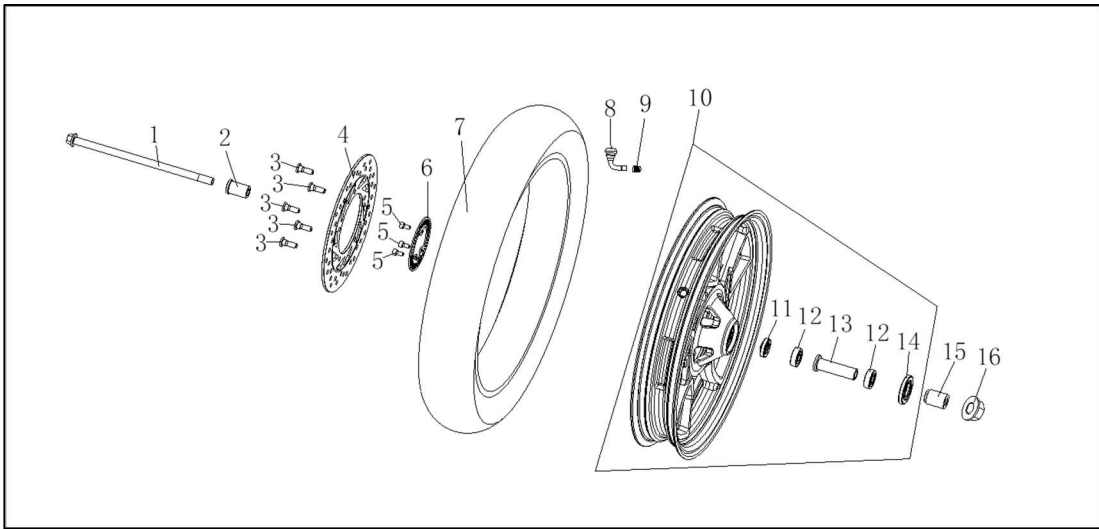
**NOTE:**

- After completing the above tasks, use a cleaner to remove any spilled coolant from the engine surface, then dry the area with compressed air.



## VIII. Removal and Maintenance of Front Wheel Assembly

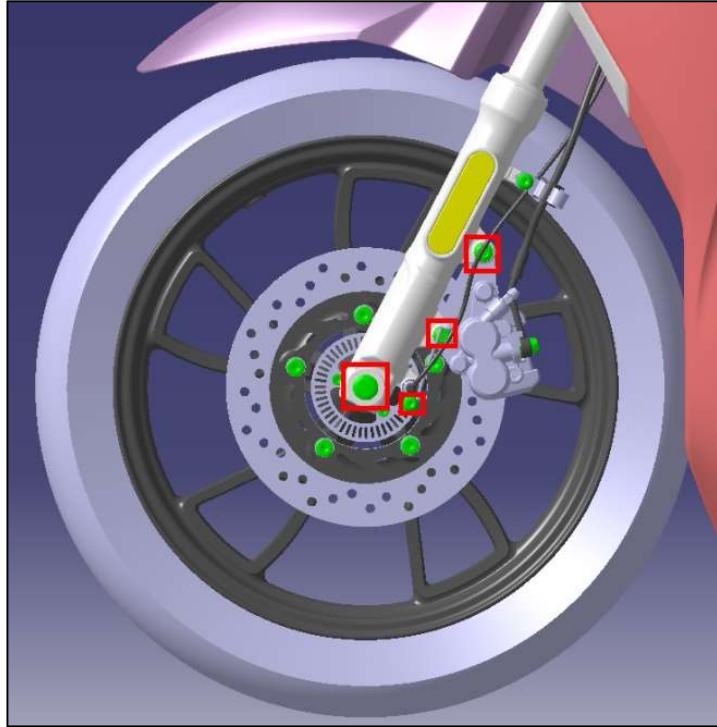
### Front Wheel Assembly and Components



1	Axle	no.	1
2	Bush	no.	1
3	Disc brake fastening bolt	no.	5
4	Front disc brake	no.	1
5	Socket head cap screw	no.	3
6	ABS ring gear	no.	1
7	Tire	no.	1
8	Valve core cap	no.	1
9	Valve core	no.	1
10	Front wheel	no.	1
11	Oil seal	no.	1
12	Bearing	no.	2
13	Hub liner assembly	set	1
14	Oil seal	no.	1
15	Bush	no.	1
16	All-metal hex flange lock nut	no.	1

### Removing the Front Wheel

1. Place the vehicle upright on its center stand.
2. Unscrew the screws and remove the speed sensor.
3. Unscrew the bolts and remove front disc brake caliper.
4. Use a tool to remove the lock nut from the front wheel axle and pull out the front wheel axle.
5. Remove the front wheel assembly.
6. Reinstall the parts in the reverse order of removal.

**NOTE:**

- When removing the front disc brake caliper, do not operate the front brake lever to avoid piston movement, which could make assembly difficult.

**IMPORTANT:**

- During installation, ensure that there is no dirt on the surface of the disc brake pads and the disc rotor.
- After the replacement is done, repeatedly squeeze and release the front brake lever several times to make sure nothing is wrong with it.
- Be sure to apply lithium-based grease when reinstalling the front bushings or oil seals,

## Front wheel specifications

Front wheel	/	Aluminum wheel	2.5×16
Front tire	/	Vacuum tire	100/80-16
Front wheel runout, not greater than	/	mm	1
Radial runout of front wheel, not greater than	/	mm	1
Tightening torque for front axle	M12	Nm	60
Tightening torque for front disc brake caliper	M8	Nm	32
Tire pressure		kP	2.25

## Removing the Front Brake Disc

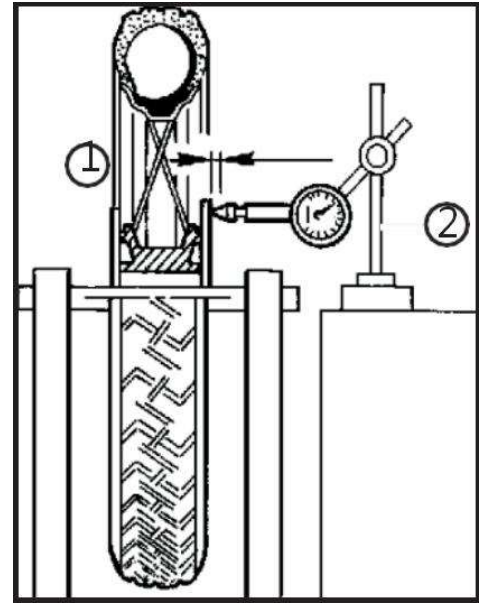
1. Remove the front wheel assembly, and place it on a workbench.
2. Unscrew the disc brake disc fastening bolts, and remove the front disc brake disc and ring gear.
3. Reinstall the parts in the reverse order of removal.

### NOTE:

- The screws for the front brake disc are coated with thread glue. When removing them, make sure to use the appropriate tools. Otherwise, they may be difficult to detach.

### IMPORTANT:

- During assembly, ensure that the surfaces of both the brake pads and the brake disc are free from dirt.
- When reinstalling the brake disc, apply thread-locking adhesive to the bolts that secure it.
- After reinstalling the brake disc, verify the runout of the disc surface by following these steps, as illustrated:
- Place the front wheel on the balancing stand using the balancing shaft (1).
- Use a dial indicator (2) to measure the runout of the brake disc surface.



End runout not greater than	mm	0.3
-----------------------------	----	-----

## Removing the Front Tire

1. Remove the front wheel assembly, and place it on a workbench.
2. Use a tool to release air from the tire toward the top valve core.
3. Use a special tool to remove the front tire.
4. Reinstall the parts in the reverse order of removal.

### NOTE:

- Please use special equipment to install the reassembled tire. Forced assembly by external force will cause permanent damage to the tire.

## Remove the Front Wheel Bearing and Oil Seal

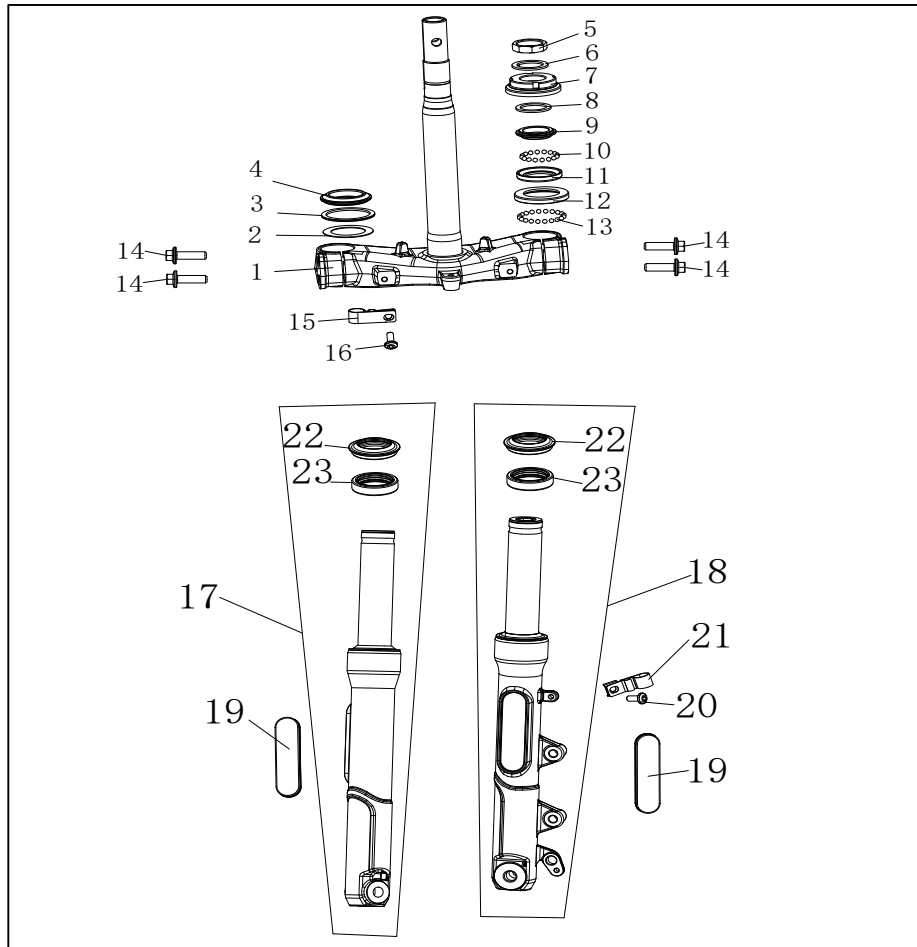
1. After removing the front wheel assembly, place the front wheel on a workbench.
2. Remove the brake disc and tire.
3. Use a special tool to remove the front wheel oil seal, bearing and bushing in turn.
4. Replace the bearing and oil seal with ones of the same size.
5. Reinstall the parts in the reverse order of removal.

### IMPORTANT:

- The front wheel oil seal will be damaged upon removal and must be replaced. Otherwise, inadequate waterproofing may hasten bearing wear.
- To remove the front wheel bearing, a special-purpose puller is required.
- For easier installation, heat the front wheel bearing housing to 100°C before pressing in the bearing.

## IX. Removal and Maintenance of Front Fork Assembly

### Front Fork Assembly and Components

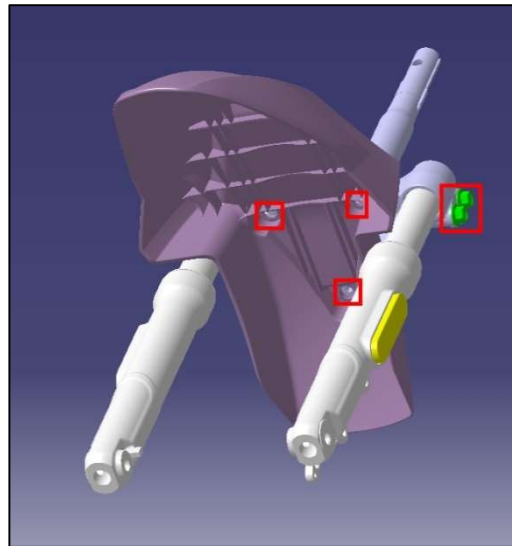
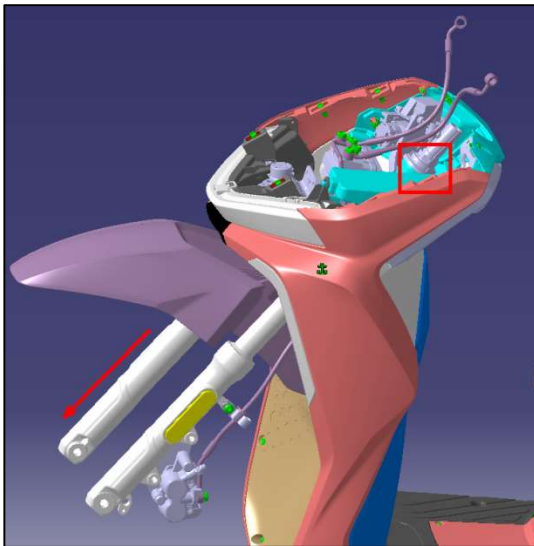


1	Steering column	no.	1
2	Steering column washer	no.	1
3	Rubber steering column dust ring	no.	1
4	Bearing retainer 2	no.	1
5	Steering column lock nut	no.	1
6	Lock washer	no.	1
7	Steering column adjusting nut	no.	1
8	Flat washer	no.	1
9	End ring	no.	1
10	Ball assembly	no.	1
11	Bearing race	no.	1
12	Bearing race 2	no.	1
13	Ball assembly 2	no.	1
14	Hex head flange bolt	no.	4
15	Hose hook	no.	1
16	Socket head cap screws	no.	1
17	Front shock absorber 2	no.	1
18	Front shock absorber	no.	1
19	Side reflector	no.	2

20	Socket head cap screw	no.	1
21	Hose hook	no.	1
22	Front shock absorber dust seal	no.	2
23	Oil seal	no.	2

## Removing the Front Fork

1. Place the vehicle upright on its center stand.
2. Remove the handlebar and related parts following the steps described in Section II: Removal and Maintenance of Handlebar.
3. Remove the front wheel, front ABS oil pipe and front shock absorber clamp bolt, lift the front vehicle head and fasten it following the steps described in Section VIII: Removal and Maintenance of Front Wheel.



4. Remove the steering column lock nut with a special tool, slowly pull out the steering column and front shock absorber, unscrew the bolts fastening the two clips of the front ABS oil pipe, and disconnect the ABS oil pipe.
5. Remove three bolts from under the front fender and remove the front fender.
6. Unscrew the bolts fastening the steering column and front shock absorber on both sides to detach the front shock absorber from the steering column.
7. Reinstall the parts in the reverse order of removal.

### NOTE:

- **When reinstalling the front fender, ensure that the oil pipe and ABS sensor wire harness are bundled in the same manner as they were before removal. Failure to do so may result in interference between the oil pipe and front fender, causing noise while the vehicle is in motion.**

- When reinstalling the front shock absorber, first pre-install the front wheel axle, and then tighten the mounting bolts for the shock absorber on the upper connecting plate and the steering column.

**IMPORTANT:**

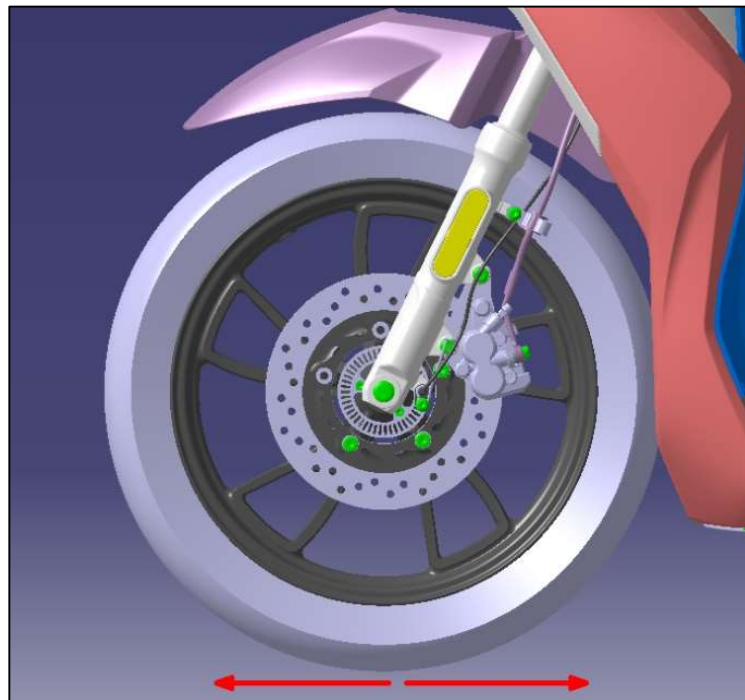
- When reassembling the steering bearings, apply lithium-based grease to ensure proper lubrication of the bearing.
- During reassembly, be sure to check that the gap between the speed sensor probe and the front wheel sensing ring gear is within the acceptable range.

Fastener tightening torque values:

Upper mounting bolt, front shock absorber	M10	N.m	45
Lock nut, steering column	M26	N.m	50±5

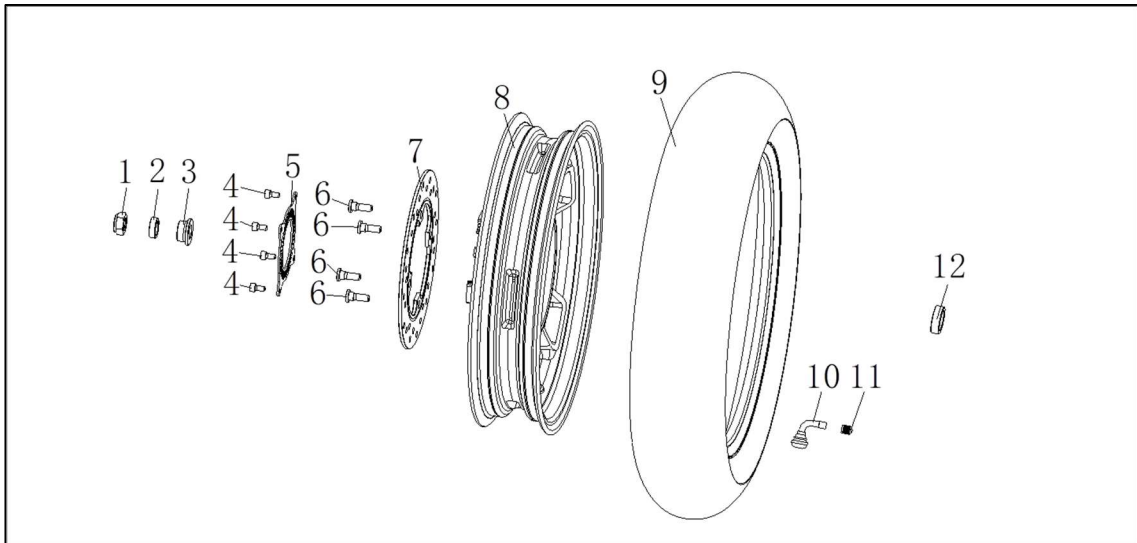
### Assessing the Play in the Steering Bearings

1. To check for looseness in the steering bearings while riding the vehicle at a low speed, repeatedly and quickly engage the front brake lever.
2. Place the vehicle on its stand, and then gently pull the front wheel back and forth in the indicated direction to further assess for any play in the steering bearings.



## X. Removal and Maintenance of Rear Wheel Assembly

### Rear Wheel Assembly and Components

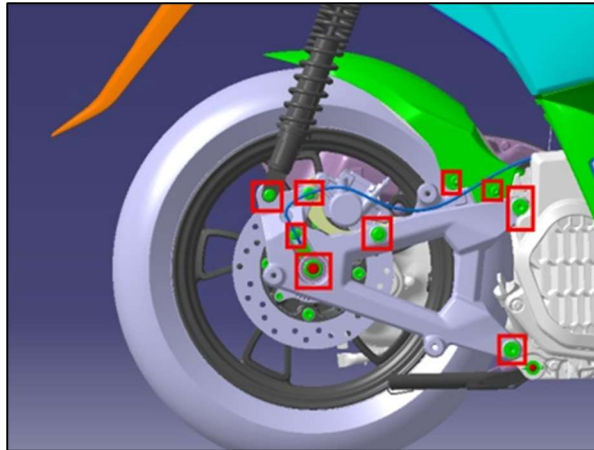


1	All-metal hex lock nut	no.	1
2	Bushing	no.	1
3	Bushing	no.	1
4	Socket head cap screws	no.	4
5	ABS ring gear	no.	1
6	Disc brake fastening bolt	no.	4
7	Rear disc brake	no.	1
8	Rear wheel	no.	1
9	Tire	no.	1
10	Valve core cap	no.	1
11	Valve core	no.	1
12	Bushing	no.	1

### Removing the Rear Wheel

1. Place the vehicle upright on its center stand.
2. Remove the muffler following the steps described in Section IV: Removal and Maintenance of Muffler.
3. Remove the rear disc brake caliper and rear wheel speed sensor following the steps described in Section XII: Removal and Maintenance of Brake System.
4. Remove the bolts from the lower mounting point of the rear shock absorber following the steps described in Section XI: Removal and Maintenance of Rear Shock Absorber.
5. Remove two screws from the rear fender and three bolts from the rear shock absorber connector, and then detach the rear shock absorber connector.
6. Remove the rear wheel from the right side.
7. Reinstall the parts in the reverse order of removal.



**IMPORTANT:**

- During assembly, ensure that there are no contaminants on the disc brake pads and the working surface of the brake disc.
- Apply lithium-based grease when reinstalling the rear bushings and oil seals.

Rear wheel specifications:

Rear wheel		Aluminum wheel	2.75x14
Rear tire		Vacuum tire	120/80-14
Rear wheel end runout, not greater than		mm	1
Radial runout of rear wheel, not greater than		mm	1
Tightening torques for rear axle	M16		120
Tire pressure		bar	2.25

**Removing the Rear Brake Disc**

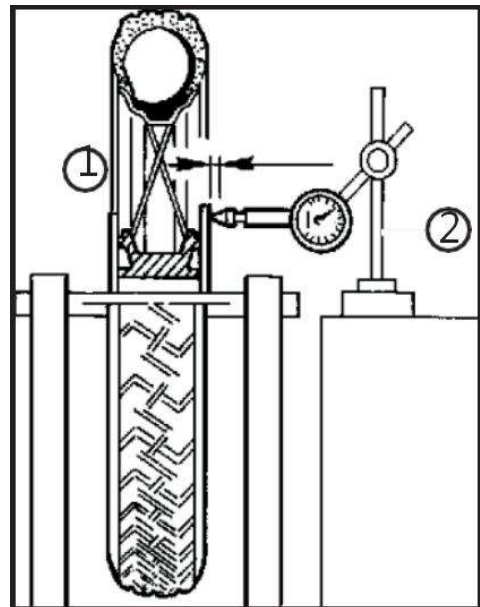
1. Remove the rear wheel assembly, and place it on a workbench.
2. Unscrew the disc brake disc fastening bolts, and remove the front disc brake disc and ring gear.
3. Reinstall the parts in the reverse order of removal.

**NOTE:**

- The screws for the rear brake disc are coated with thread glue. When removing them, make sure to use the appropriate tools. Otherwise, they may be difficult to detach.

**IMPORTANT:**

- During assembly, ensure that the surfaces of both the brake pads and the brake disc are free from dirt.
- When reinstalling the brake disc, apply thread-locking adhesive to the bolts that secure it.
- After reinstalling the brake disc, verify the runout of the disc surface by following these steps, as illustrated:
- Place the front wheel on the balancing stand using the balancing shaft (1).





- Use a dial indicator (2) to measure the runout of the brake disc surface.

End runout not greater than	mm	0.3
-----------------------------	----	-----

## Removing the Rear Tire

1. Remove the rear wheel assembly, and place it on a workbench.
2. Remove the valve core to let out air from inside the tire.
3. Use a special tool to remove the rear tire.
4. Remove the valve core.
5. Reinstall the parts in the reverse order of removal.

### NOTE:

- When reassembling the tire, it is essential to use special-purpose equipment for this purpose. Applying excessive force during installation can lead to permanent damage to the tire.

## Removing the Rear Wheel Bearing and Oil Seal

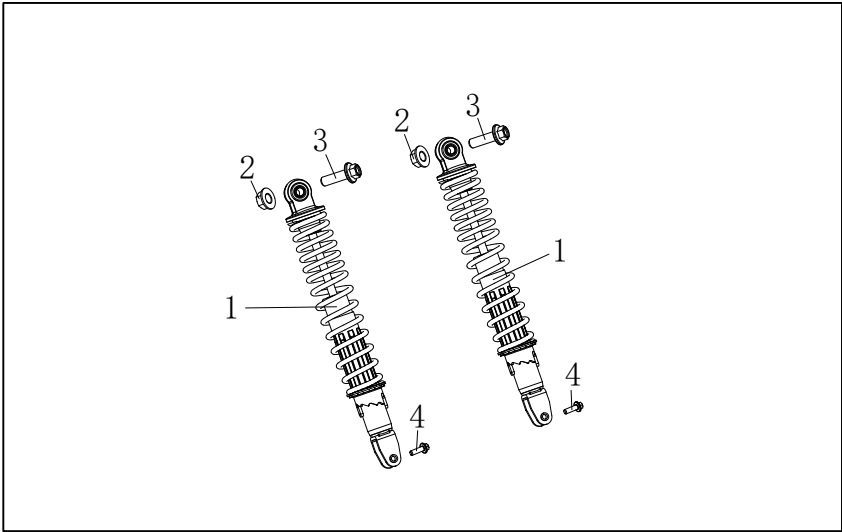
1. The rear wheel assembly and place it on a workbench.
2. Remove the brake disc and tire.
3. Use a special tool such as circlip pliers to remove the rear wheel oil seal, circlip and bearing in turn.
4. Replace the related parts with new ones of the same specifications.
5. Reinstall the parts in the reverse order of removal.

### IMPORTANT:

- The rear wheel oil seal will be damaged upon removal and must be replaced.
- To remove the rear wheel bearing, a special-purpose puller is required.
- To installation easier, heat the rear wheel bearing housing to 100°C before pressing in the bearing.
- Note that one side of the bearing has a retaining snap ring; do not forget to install it.
- When pressing in the bearing, use special pressing equipment. First, press the side with the elastic retaining ring (right side) all the way in, and then proceed to press in the bearing on the other side.

## XI. Removal and maintenance of rear suspension assembly

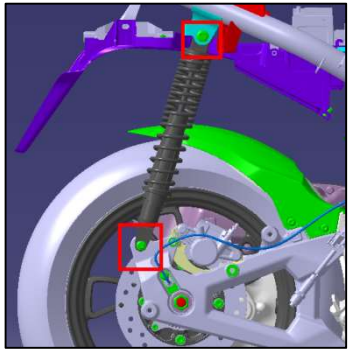
### Rear Suspension Assembly and Components



1	Rear shock absorber	nos.	2
2	All-metal hex flange lock nut	nos.	2
3	Hex head flange bolt	nos.	2
4	Hex head flange bolt	nos.	2

### Removing the Rear Shock Absorber

1. Place the vehicle upright on its center stand.
2. Remove the left and right vehicle bodies and fender following the steps described in Section XII: Removal and Maintenance of Rear Lamp.
3. Remove the muffler following the steps described in Section 4: Removal and Maintenance of Muffler.
4. Unscrew the rear shock absorber upper mounting bolts and nuts.
5. Unscrew the lower mounting bolts from the rear shock absorber and finally remove the rear shock absorber.
6. Reinstall the parts in the reverse order of removal.



Fastener tightening torque values:

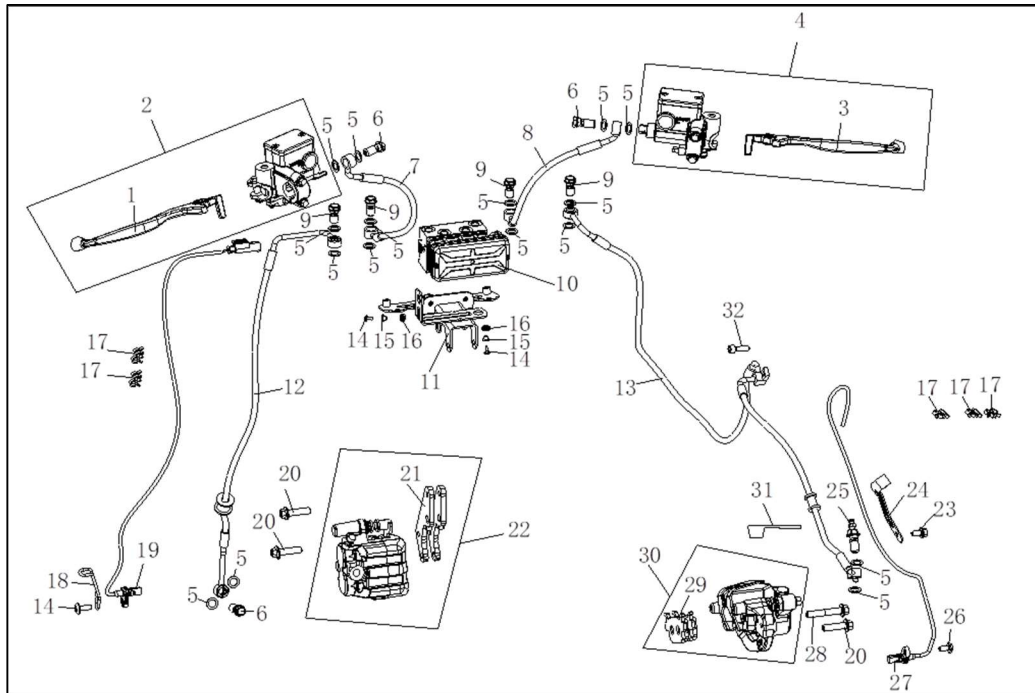
Rear shock absorber upper mounting bolt	M10	Nm	45
Rear shock absorber lower mounting bolt	M8	Nm	32

### NOTE:

- With both the left and right rear shock absorbers removed, the vehicle will be unstable and unable to stand steadily. Therefore, it is essential to support the vehicle body before proceeding with disassembly.

## XII. Removal and Maintenance of Brake System

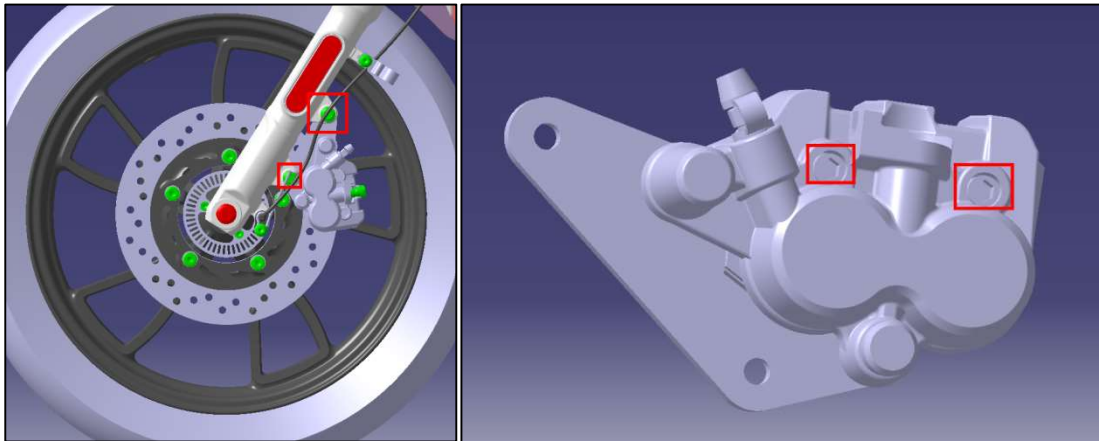
### Braking System and Components



1	Left brake lever	no.	1
2	Rear disc brake cylinder	no.	1
3	Right brake lever	no.	1
4	Front disc brake cylinder	no.	1
5	Flat washer	no.	16
6	Disc brake hose bolt	no.	3
7	ABS oil pipe	no.	1
8	ABS oil pipe	no.	1
9	Disc brake hose bolt	no.	4
10	ABS device	no.	1
11	Front penal support	no.	1
12	ABS oil pipe	no.	1
13	ABS oil pipe	no.	1
14	Socket head cap screws	no.	3
15	Bushing	no.	2
16	Rubber I-ring	no.	2
17	Pipe clip	no.	5
18	Clip	no.	1
19	Speed sensor	no.	1
20	Hex head flange bolt	no.	3
21	Front disc brake assembly	no.	1
22	Front disc brake caliper	no.	1
23	Hex head flange bolt	no.	1
24	Clip	no.	1

25	Disc brake hose bolt	no.	1
26	Socket head cap screws	no.	1
27	Speed sensor	no.	1
28	Hex head flange bolt	no.	1
29	Rear disc brake pad assembly	no.	1
30	Rear disc brake caliper	no.	1
31	Bleeder screw cap	no.	1
32	Socket head cap screw	no.	1

## Replacing the Front Disc Brake Pad

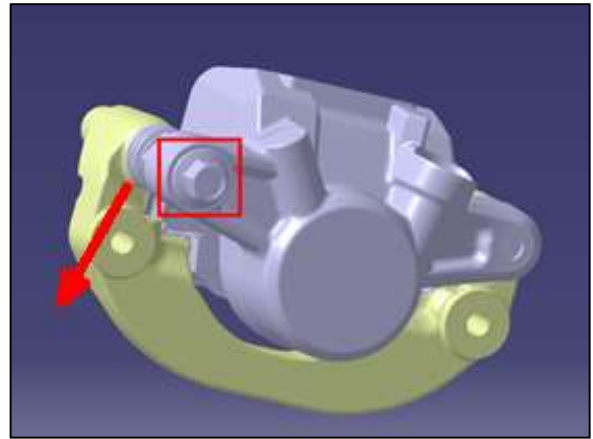
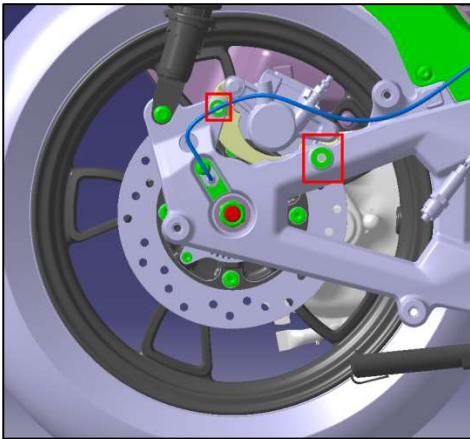


1. Place the vehicle upright on its center stand.
2. Unscrew the mounting bolts from the front disc brake caliper and remove the rear disc brake caliper.
3. Unscrew the hex socket bolt with a tool and take it out.
4. Remove the brake pads.
5. Replace the front brake pads with new ones.
6. Reinstall the parts in the reverse order of removal.

### IMPORTANT:

- When removing the brake pads, do not operate the front brake lever to avoid piston movement, as this can make the brake pads difficult to install.
- When replacing the brake pads, both the inner and outer ones must be replaced as a pair.
- During assembly, ensure that there is no dirt on the working surface of the disc brake pads and the brake disc.
- After replacing the brake pads, repeatedly squeeze the brake lever several times to ensure that it works normally.
- Dispose of the old front disc brake pads in an environmentally responsible manner.

## Replacing the Rear Disc Brake Pads



1. Unscrew the mounting bolts from the rear disc brake caliper and remove the rear disc brake caliper.
2. Unscrew the bolt and remove the brake pad holder in the reverse direction shown.
3. Remove the brake pad.
4. 4, Remove the rear brake pads.
5. Replace the brake pads with new ones.
6. Reinstall the parts in the reverse order of removal.

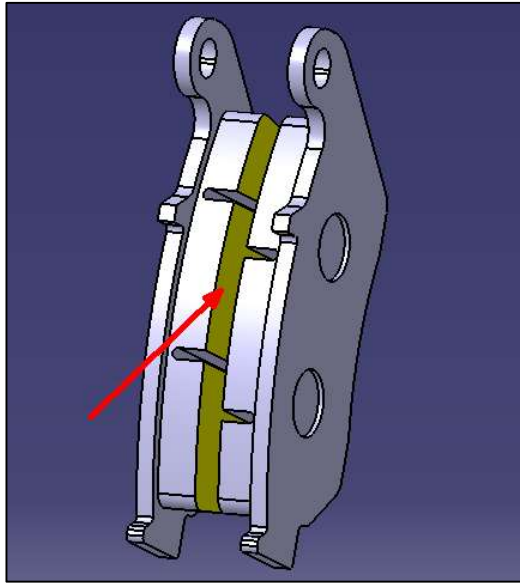
### IMPORTANT:

- When removing the brake pads, do not operate the front brake lever to avoid piston movement, as this can make the brake pads difficult to install.
- When replacing the brake pads, both the inner and outer ones must be replaced as a pair.
- During assembly, ensure that there is no dirt on the working surface of the disc brake pads and the brake disc.
- After replacing the brake pads, repeatedly squeeze the brake lever several times to ensure that it works normally.
- Dispose of the old front disc brake pads in an environmentally responsible manner.

## Checking the Disc Brake Pads

1. The wear surface of the brake pads must not show signs of edge biting or uneven wear. If such conditions occur, please visit a professional service center for inspection.
2. The maximum allowable wear of the brake pads must not exceed the depth of the groove in them.

3. The brake pads should be replaced when the vehicle has traveled 15,000km.



### Checking the Front and Rear Brake Systems for Brake Fluid Level

1. Place the vehicle upright on its center stand.
2. Rotate the handle to position the front brake master cylinder horizontally, and check the fluid level through the opening.
3. The fluid levels for both the front and rear brakes must be between the two limit marks (UPPER/LOWER) on the brake fluid reservoir for the front and rear disc brakes.

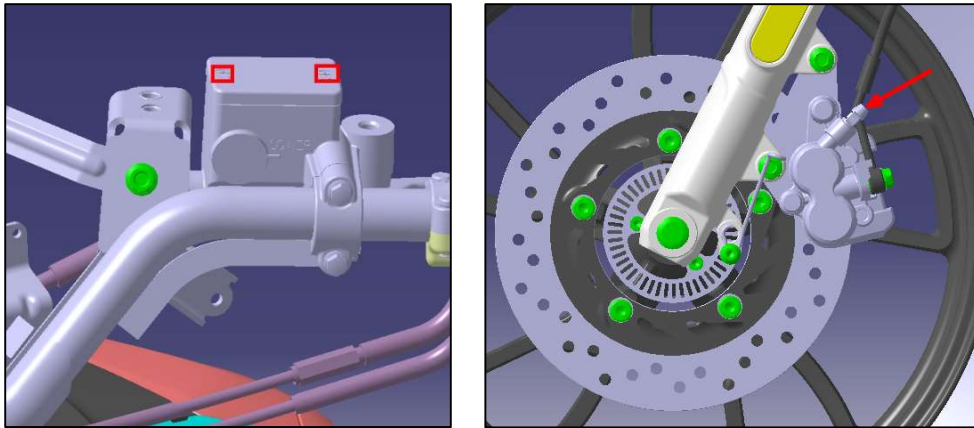


#### NOTE:

- Throughout the process of the front and rear disc brake pads going from new to the wear limit, the brake fluid capacity (minimum/maximum) will still meet the usability requirements. Typically, it is not necessary to add brake fluid due to pad wear.
- If, during the use of the brake pads, the brake fluid level drops below the minimum mark, it may indicate that there are other issues present.



## Replacing the Front Disc Brake Fluid



1. Place the vehicle upright on its center stand.
2. Following the steps described in Chapter II: Removal and Maintenance of Handlebar, disassemble the handlebar until it looks like the illustrated example, and then rotate the handlebar to position the disc brake reservoir cap horizontally.
3. Use a tool to carefully remove the disc brake reservoir cap along with the rubber cover.
4. Connect the brake fluid extractor to the bleeder screw on the front disc brake caliper.
5. Use a tool to loosen the bleeder screw by turning it half a turn.
6. Activate the brake fluid extractor to completely drain all the brake fluid.
7. Pour new brake fluid into the reservoir through the filler while simultaneously activating the extractor until the entire brake line is filled.
8. Tighten the bleeder screw securely.
9. Check and adjust the brake fluid level in the reservoir to ensure it falls between the UPPER and LOWER limit marks.
10. Connect the ABS diagnosing tool to the ABS to check for any fault codes; if any are detected, investigate and resolve them accordingly.
11. Reinstall the parts in the reverse order of removal.

### NOTE:

- After brake fluid refilling is done, it is essential to remove any spilt brake fluid around the reservoir and the bleeder screw on the front brake caliper.

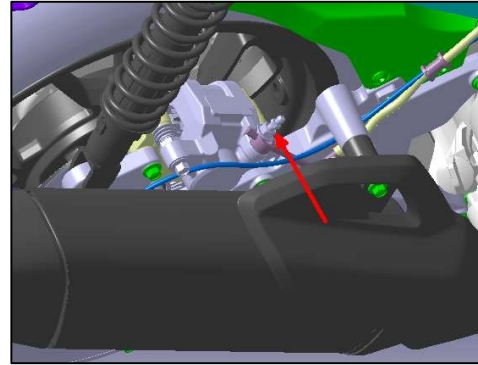
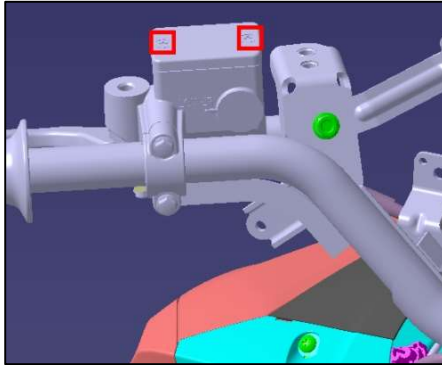
### IMPORTANT:

- Do not allow brake fluid to come into contact with any painted surfaces on the motorcycle, as brake fluid is corrosive.
- When extracting brake fluid, ensure that the fluid level does not drop below the LOWER limit mark on the reservoir. Otherwise, air bubbles may enter the brake system. If this occurs, brake fluid extraction has to be done all over again.
- Once the refilling is complete, apply steady pressure to the front brake lever and hold it for a while, then check the brake lines for any fluid leaks.
- If any issues are found with the disc brake hose assembly or threaded connections, they should be replaced immediately.
- Never mix brake fluids from different brands or types.

Brake fluid specifications:

Front brake system brake fluid capacity	m.	65
Brake fluid type	Great Wall	DOT4

## Replace the rear disc brake fluid



1. Place the vehicle upright on its center stand.
2. Following the steps described in Chapter II: Removal and Maintenance of Handlebar, disassemble the handlebar until it looks like the illustrated example, and then rotate the handlebar to position the disc brake reservoir cap horizontally.
3. Use a tool to carefully remove the disc brake reservoir cap along with the rubber cover.
4. Connect the brake fluid extractor to the bleeder screw on the front disc brake caliper.
5. Use a tool to loosen the bleeder screw by turning it half a turn.
6. Activate the brake fluid extractor to completely drain all the brake fluid.
7. Pour new brake fluid through the filler into the reservoir while simultaneously starting the extractor until the entire brake line is filled.
8. Tighten the bleeder screw securely.
9. Check and adjust the brake fluid level in the reservoir to ensure it falls between the UPPER and LOWER limit marks.
10. Connect the ABS diagnosing tool to the ABS to check for any fault codes; if any are detected, investigate and resolve them accordingly.
11. Reinstall the parts in the reverse order of removal.

### NOTE:

- After brake fluid refilling is done, it is essential to remove any spilt brake fluid around the reservoir and the bleeder screw on the front brake caliper.

### IMPORTANT:

- Do not allow brake fluid to come into contact with any painted surfaces on the motorcycle, as brake fluid is corrosive.
- When extracting brake fluid, ensure that the fluid level does not drop below the LOWER limit mark on the reservoir. Otherwise, air bubbles may enter the brake system. If this occurs, brake fluid extraction has to be done all over again.
- Once the refilling is complete, apply steady pressure to the front brake lever and hold it for a while, then check the brake lines for any fluid leaks.
- If any issues are found with the disc brake hose assembly or threaded connections, they should be replaced immediately.
- Never mix brake fluids from different brands or types.

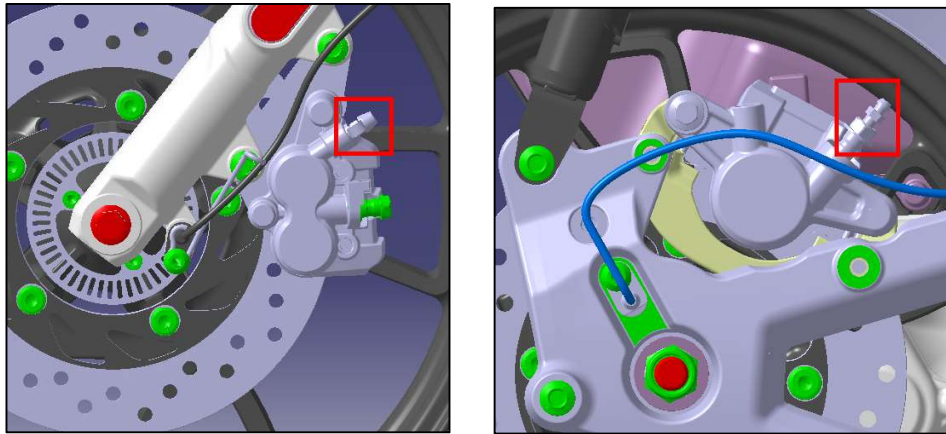


Brake fluid specifications:

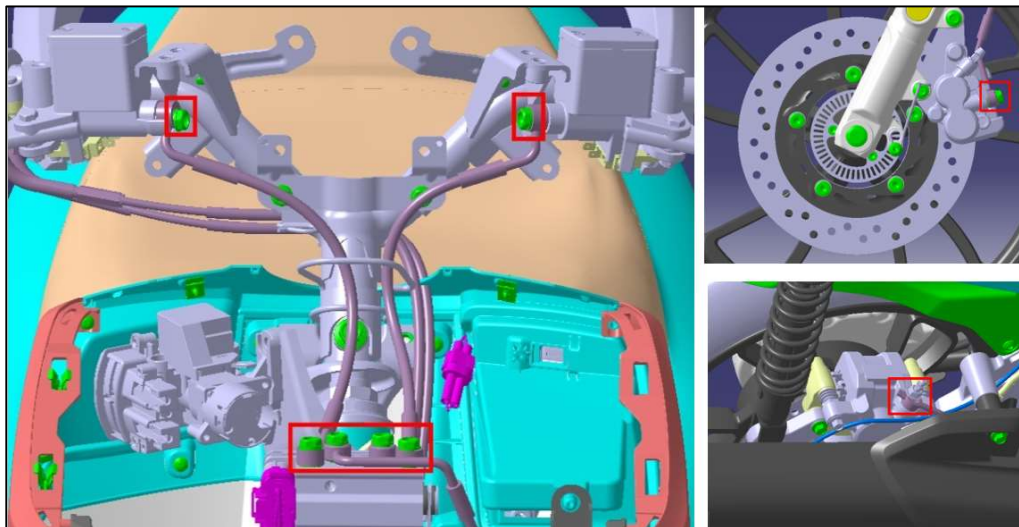
Front brake system brake fluid capacity	m.	65
Brake fluid type	Great Wall	DOT4

## Replacing the ABS and Parts of the Front and Rear Brake Lines

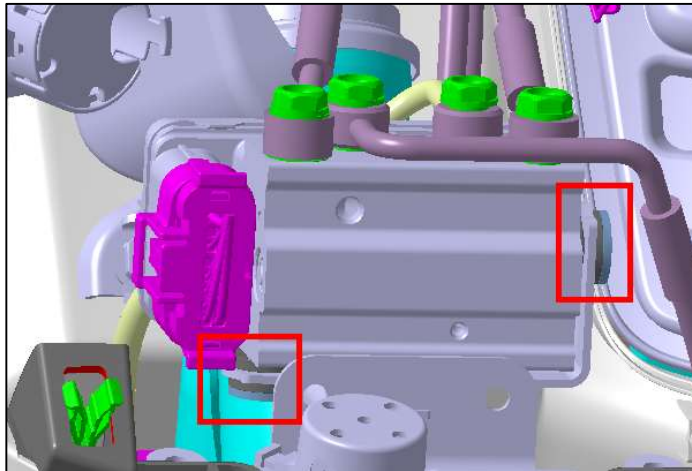
1. Place the vehicle upright on its center stand.
2. Remove the muffler following the steps described in Section IV: Removal and Maintenance of Muffler.
3. Loosen the front and rear bleeder screws, connect the bleeder screws with a fluid extractor, and drain the brake fluid from the pipeline. The procedure is as described above for replacing the brake fluid.



4. Remove the perforated bolts for the fluid hoses connecting the front and rear master cylinders and front and rear brake calipers, as well as the that connecting the brake line to the ABS, along with the associated sealing washers.



5. Then remove the two screws connecting the ABS to the front panel support.



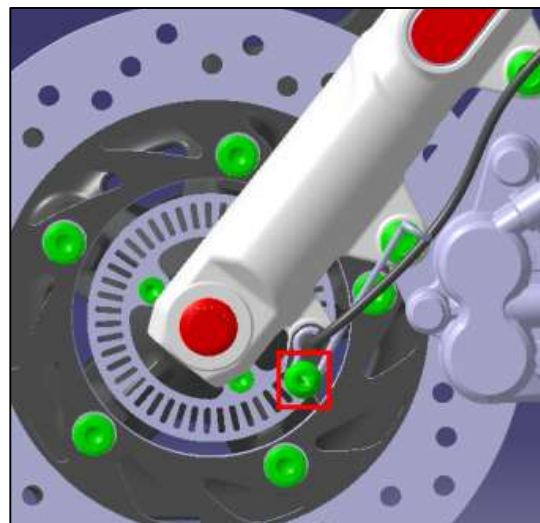
6. Complete the above steps to remove the ABS and brake fluid pipe.
7. Reinstall the parts in the reverse order of removal.
8. Finally, fill the brake fluid reservoir in the same way as described above for replacing the brake fluid, and perform a final check.

**IMPORTANT:**

- **Brake fluid is corrosive. Take care not to splash it onto your skin or clothing when draining and refilling.**
- **The sealing washer on the perforated bolt must be replaced with a new one upon reinstallation. Otherwise, there is a risk of fluid leakage.**
- **Sealing washers must be installed at each adjacent sealing surface.**

**Removing the Front Wheel Speed Sensor**

1. Place the vehicle upright on its center stand.
2. Unscrew the screws and remove the front wheel speed sensor.
3. Reinstall the parts in the reverse order of removal.

**IMPORTANT:**

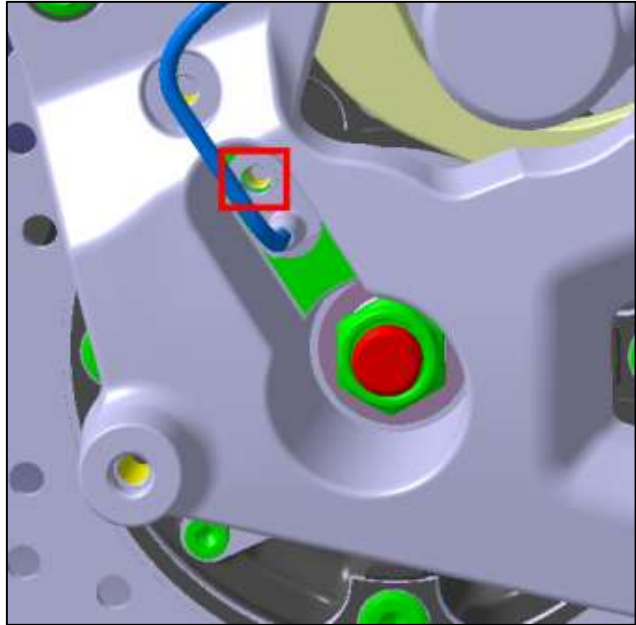
1. **After reinstalling the front wheel speed sensor, lift the front wheel off the ground. Rotate the front wheel and observe the changes in the gap between the wheel speed sensor and the front ABS ring gear.**

Front wheel speed sensor specifications:

Sensor bolt tightening torque	M6	Nm	9
Clearance between front wheel speed sensor and ABS ring gear		mm	1

## Removing the Rear Wheel Speed Sensor

1. Place the vehicle upright on its center stand.
2. Remove the muffler following the steps described in Section IV: Removal and Maintenance of Muffler.
3. Unscrew the bolts and remove the rear wheel speed sensor.
4. Reinstall the parts in the reverse order of removal.



### IMPORTANT:

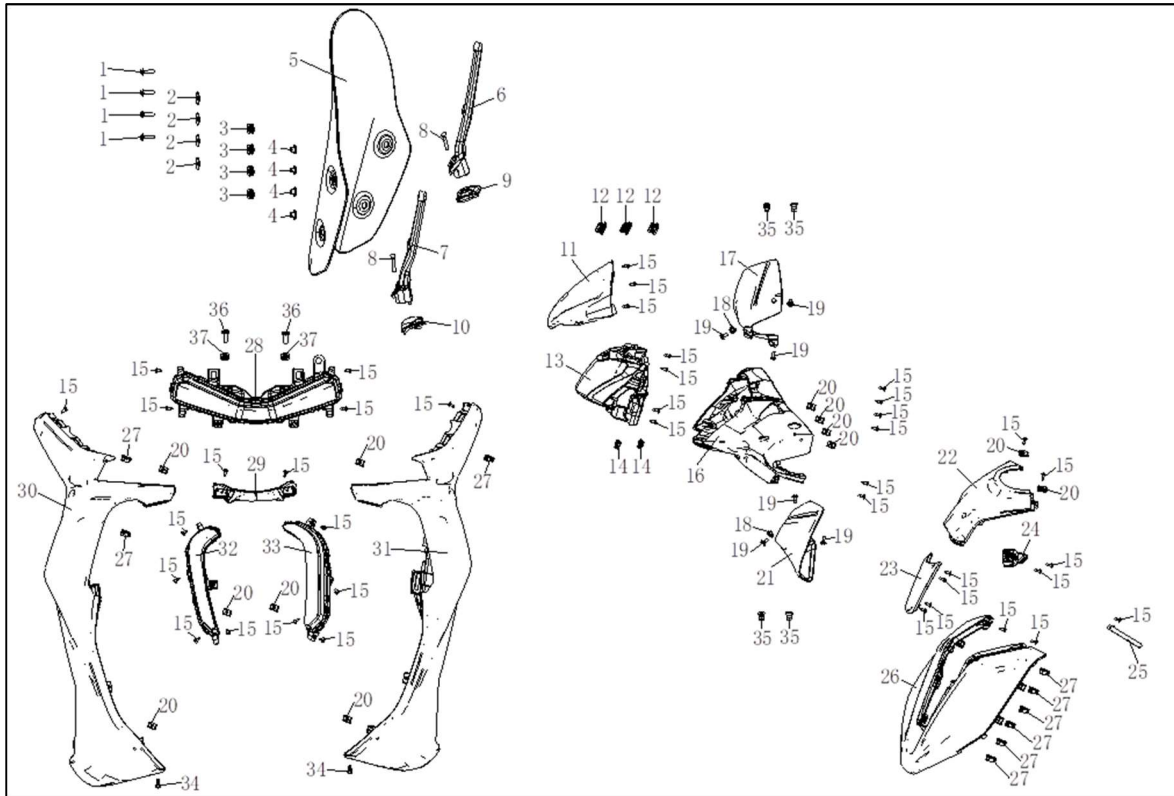
**After reinstalling the rear wheel speed sensor, lift the front wheel off the ground. Rotate the rear wheel and observe the changes in the gap between the wheel speed sensor and the rear ABS ring gear.**

Front wheel speed sensor specifications:

Sensor bolt tightening torque	M6	Nm	9
Gap between rear speed sensor and ABS ring gear		mm	1

### XIII. Removal and Maintenance of Lamps

#### Headlamp Assembly and Components

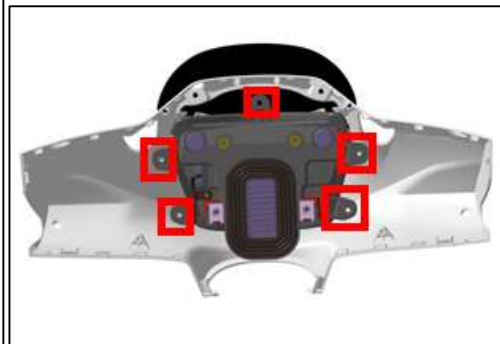
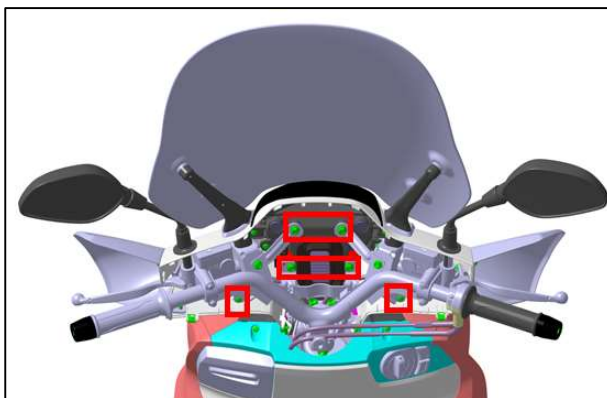
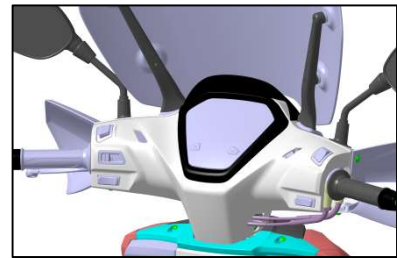


1	Socket head cap screw	no.	4
2	Flat washer	no.	4
3	Rubber I-ring	no.	4
4	Bushing	no.	4
5	Windshield	no.	1
6	Windshield stay	no.	1
7	Windshield stay	no.	1
8	Hex head flange bolt	no.	2
9	Windshield rubber sleeve	no.	1
10	Windshield rubber sleeve	no.	1
11	Deflector panel	no.	1
12	Rubber I-ring	no.	3
13	Headlamp	no.	1
14	Clip nut	no.	2
15	Cross-recessed pan head self-tapping screw	no.	39
16	Deflector	no.	1
17	Right handlebar guard	no.	1
18	Clip nut	no.	2
19	Cross-recessed pan screw	no.	6
20	Clip nut	no.	6
21	Left handlebar shield	no.	1

22	Front panel connector	no.	1
23	Front panel trim cover	no.	1
24	Camera mounting bracket	no.	1
25	Locating wire clip	no.	1
26	Front panel	no.	1
27	Retaining clip	no.	10
28	Front position lamp	no.	1
29	Windshield trim cover	no.	1
30	Right windshield	no.	1
31	Left windshield	no.	1
32	Right turn signal lamp	no.	1
33	Left turn signal lamp	no.	1
34	Expansion screw set	no.	2
35	Threaded sleeve	no.	4
36	Socket head cap screw	no.	2
37	Rubber I-ring	no.	2

## Removing the Headlamp

1. Place the vehicle upright on its center stand.
2. Unscrew the bolts and remove the windshield and windshield stay.
3. Unscrew the bolts and remove the left and right rearview mirrors.
4. Remove the instrument housing following the steps described in Section II: Removal and Maintenance of Handlebar.
5. Unscrew the bolts fastening the handlebar to the deflector, and remove the deflector.
6. Unscrew the self-tapping screws and remove the headlamp.



7. Reinstall the parts in the reverse order of removal.

### NOTE:

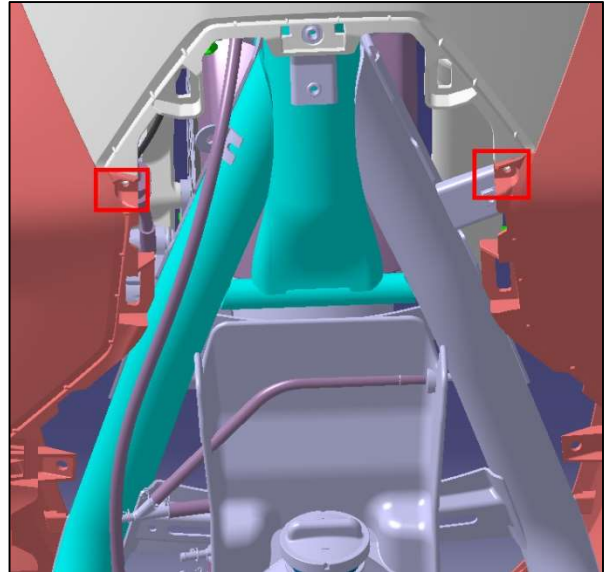
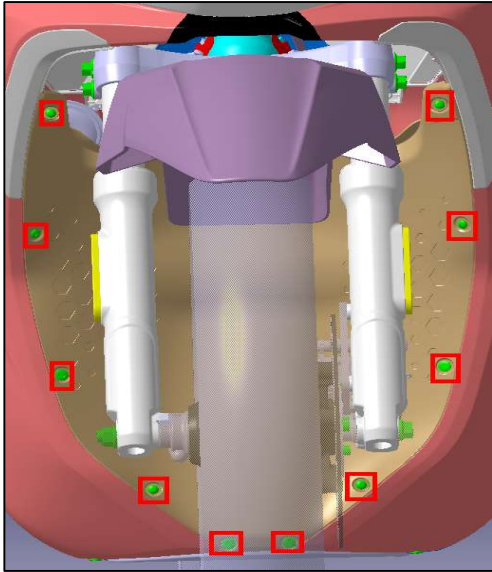
Before removing the lamps and electrical components, please disconnect the related wiring harnesses and the main cable.

## Removing the Front Position Lamp

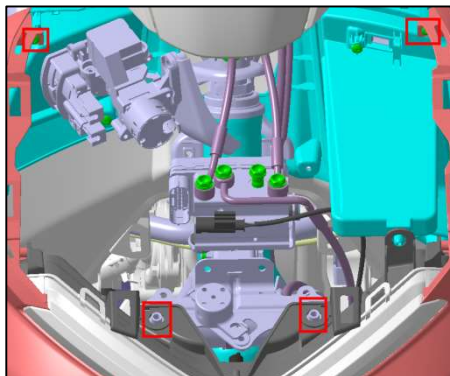
1. Place the vehicle upright on its center stand.



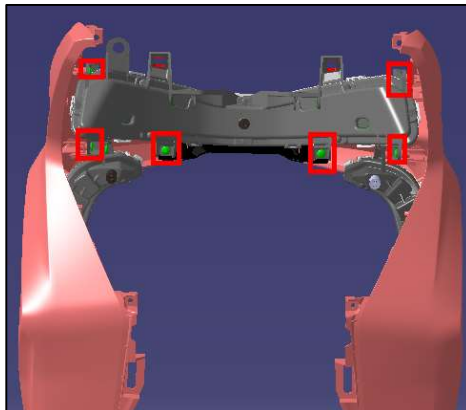
2. Unscrew the self-tapping screws and expansion screws fastening the inner windshield panel, and take out the inner windshield panel from the side.
3. Remove the center joint panel, left and right rear footpegs and left and right guard plates following the steps described in Section V: Removal and Maintenance of Fuel Tank.



4. Remove the front panel following the steps described in Section II: Removal and Maintenance of Handlebar.
5. Remove the screws connecting the left and right windshields to the vehicle body.



6. Remove the left and right windshields together with the position lamp and turn signal lamp from the vehicle body.
7. Unscrew the self-tapping screws and remove the position lamp.



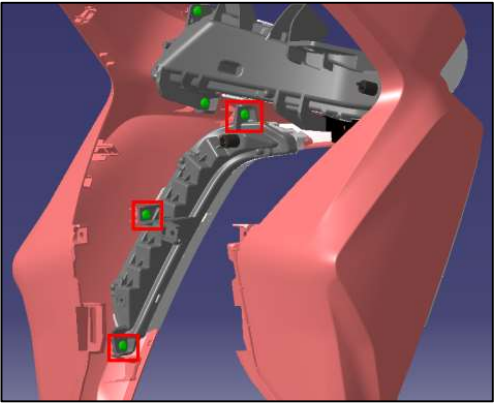
8. Reinstall the parts in the reverse order of removal.

**NOTE:**

Before removing the lamps and electrical components, please disconnect the related wiring harnesses and the main cable.

**Removing the Left and Right Turn Signal Lamps**

1. To remove the position light, take off the assembly show below, unscrew the self-tapping screws on both sides, and then take out the left and right turn signal lamps.

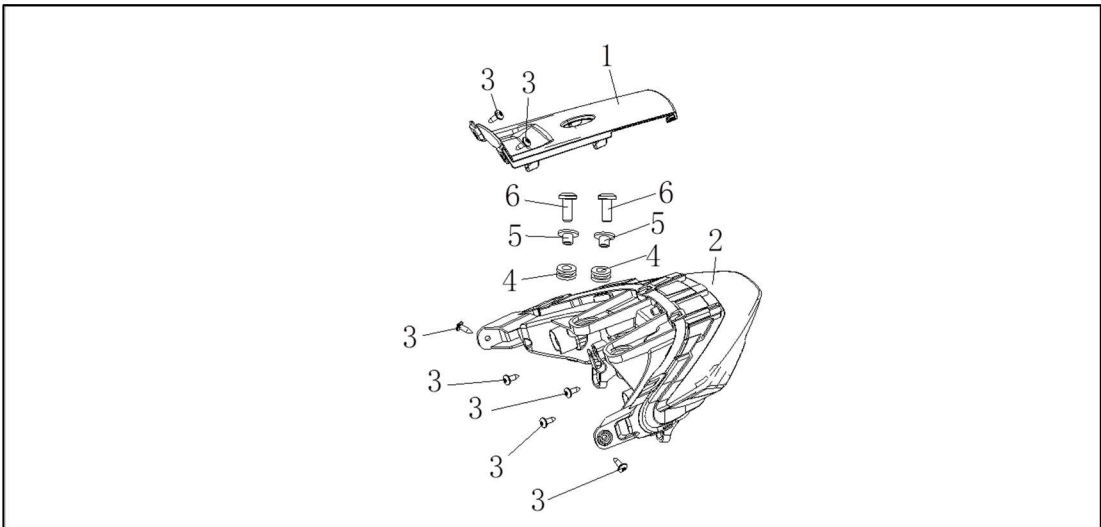


2. Reinstall the parts in the reverse order of removal.

**NOTE:**

- Before removing the lamps and electrical components, please disconnect the related wiring harnesses and the main cable.

**Rear Lamp Assembly and Components**



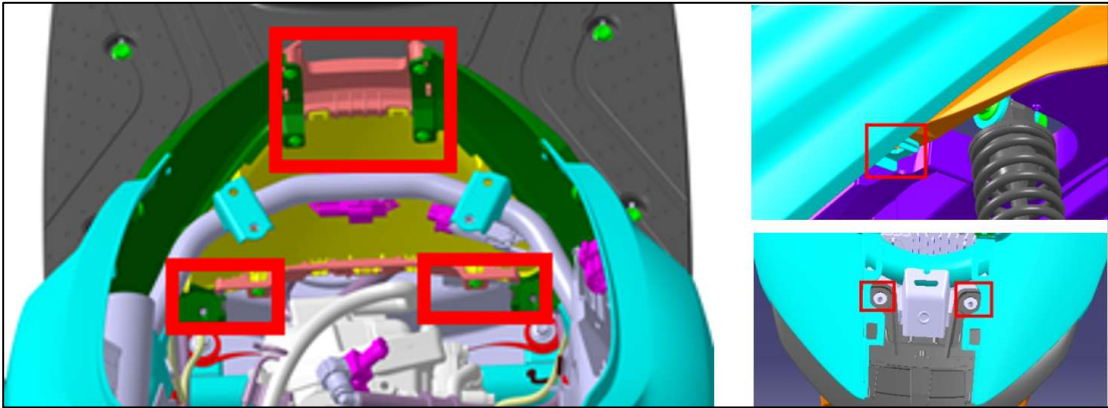
1	Tail hood	no.	1
2	Rear lamp	no.	1
3	Cross recessed pan head self-tapping screw	no.	7
4	Rubber I-ring	no.	2
5	Bushing	no.	2
6	Hex socket screw	no.	2

**Removing the Rear Lamp**

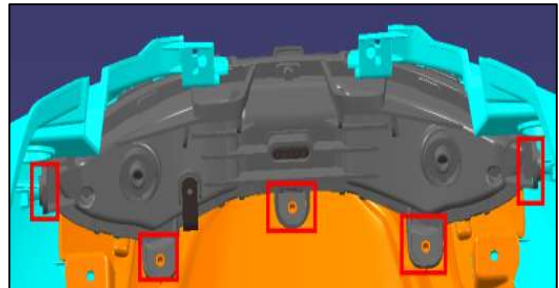
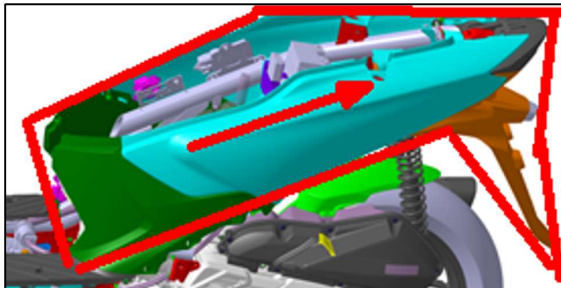
1. Place the vehicle upright on its center stand.



2. Remove the left and right rear footpegs and left and right guard plates following the steps described in Section IV: Removal and Maintenance of Muffler.
3. Refer to Chapter 3 Air Filter Removal, remove the seat cushion and trunk box following the steps described in Section III.
4. Unscrew the rear luggage rack bolts, rear hood screws and three screws on the rear fender, and remove the rear luggage rack and rear hood.
5. Unscrew the screws of the connecting parts in the middle of the vehicle body and remove the covering parts.
6. Unscrew the fastening bolts of the left and right vehicle bodies, rear lamp and frame.



7. Pull out the left and right vehicle bodies in the direction shown above.
8. Unscrew the screws fastening the rear lamp to the vehicle body and fender, and remove the rear lamp.



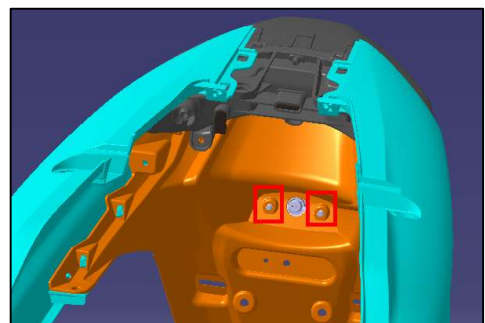
9. Reinstall the parts in the reverse order of removal.

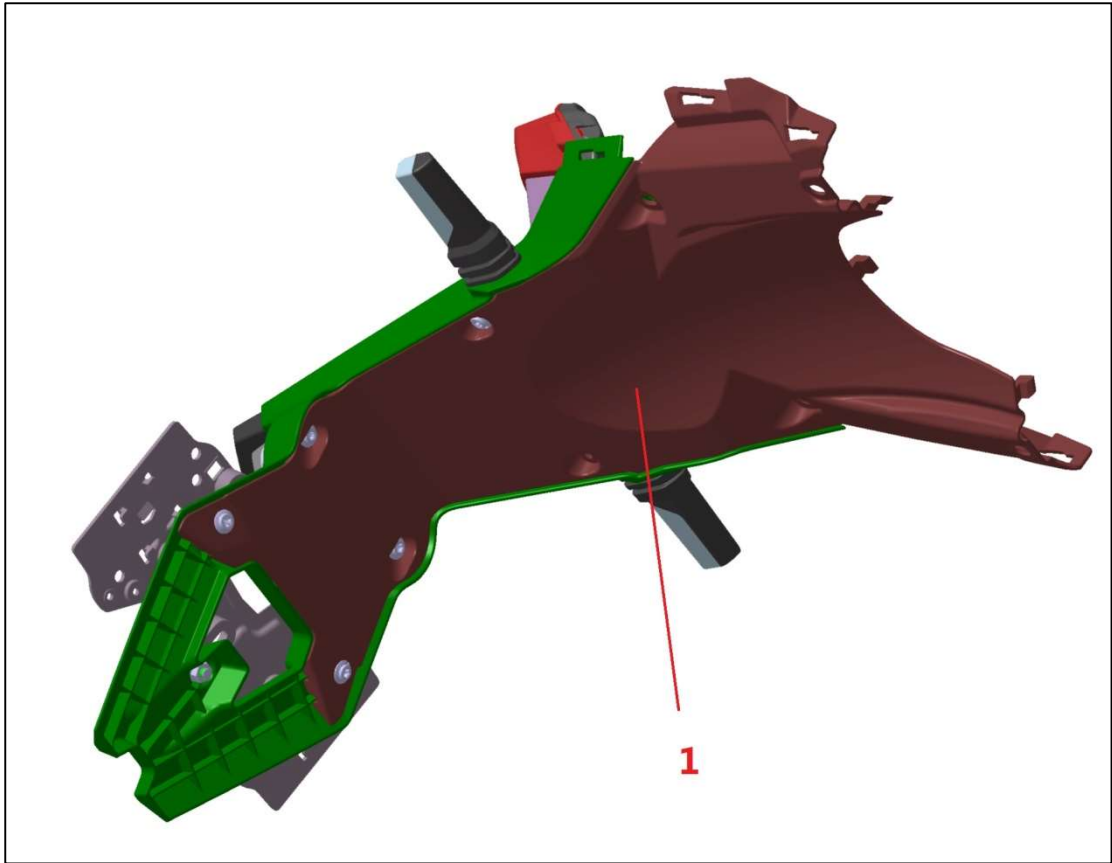
#### NOTE:

- When removing the rear lamp, please disconnect the connectors for the rear lamp, rear license lamp wiring harness, and the main cable.

### Removing the Rear License Lamp

1. Place the vehicle upright on its center stand.
2. Remove the assembly as shown using the same procedure as that for removing the rear lamp assembly.
3. Unscrew the nuts and remove the rear license lamp.
4. Reinstall the parts in the reverse order of removal.





**NOTE:**

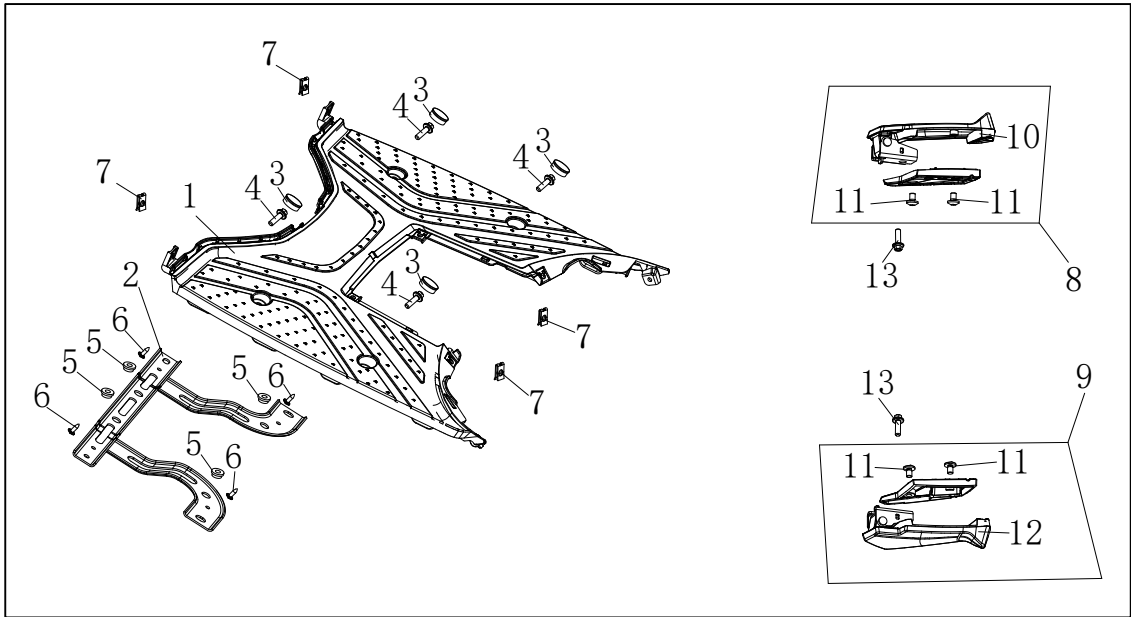
- When reinstalling the rear license lamp, be sure to arrange the wiring harness that is trapped between the inner and outer panels of the rear fender to avoid it being pinched.

Fastener tightening torque values:

Self-tapping screws for exterior components	ST4.2	Nm	1
Hex flange nut	M5	Nm	4.5
Internal spline head bolt for exterior components	M5	Nm	3
	M6	Nm	4.5
Self-tapping screws for exterior components	M6	Nm	6

## XIV. Removal and Maintenance of Main and Secondary Footrest Assemblies

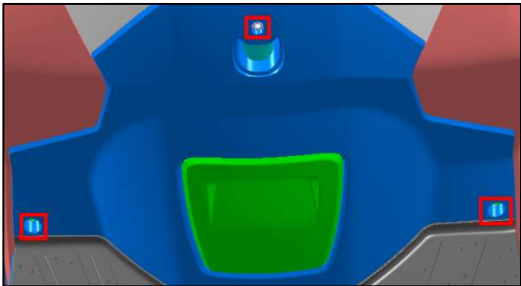
### Main and Secondary Footrest Assemblies and Components



1	foot rest	no.	1
2	footrest	no.	1
3	plug	no.	4
4	Hex head flange bolt	no.	4
5	I-shaped rubber ring	no.	4
6	cross recessed pan head tapping screw	no.	4
7	clip nut	no.	4
8	right auxiliary leg rest	set	1
9	left auxiliary leg rest	set	1
10	right accessory leg rest	no.	1
11	socket head cap screws	no.	4
12	left accessory leg rest	no.	1
13	Hex head flange bolt	no.	2

### Removing the Main Footrest (Footboard)

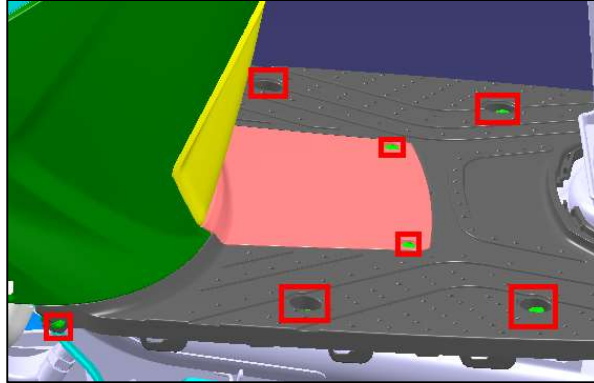
1. Place the vehicle upright on its center stand.
2. Unscrew the bolts and screws and remove the center joint plate.



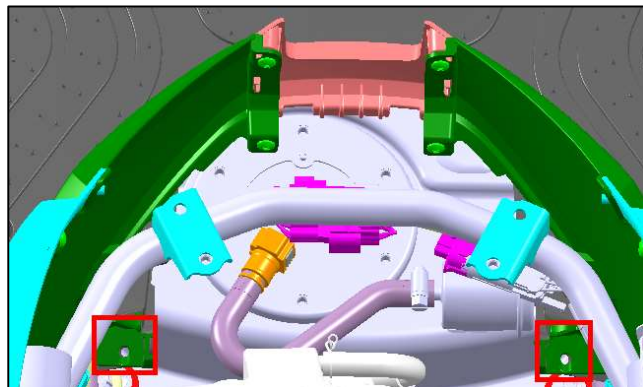
3. Remove the left and right rear footpegs and left and right guard plates following the steps

described in Section IV.

4. Unscrew the screws fastening the footboard and left and right vehicle bodies.
5. Unscrew the screws from the middle connecting part and remove the covering part.



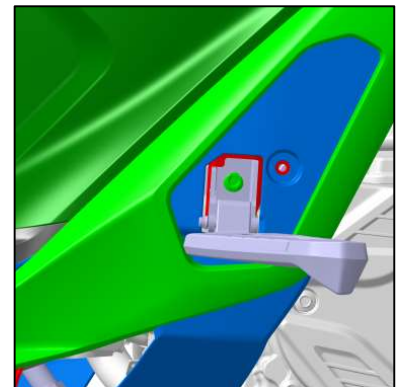
6. Remove the seat cushion and trunk box following the steps described in Section XIII: Removal and Maintenance of Rear Lamp.
7. Remove the screws fastening the footboard inside the vehicle body.



8. Use a tool to pry out the four plugs on the footboard.
9. Remove the four bolts under the plug and remove the footboard.
10. Reinstall the parts in the reverse order of removal.

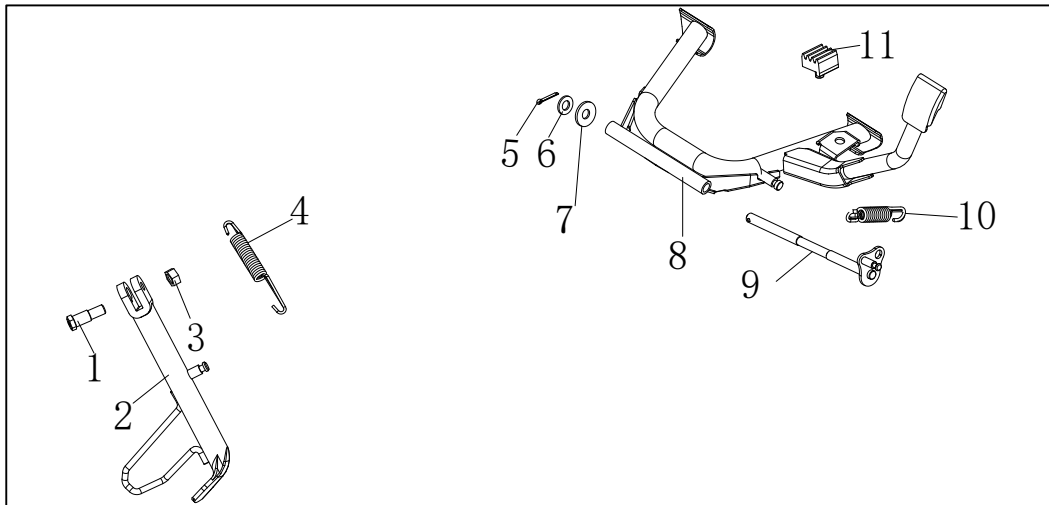
## Removing the Left and Right Secondary Footrests

1. Place the vehicle upright on its center stand.
2. Use a tool to unscrew the bolts and remove left and right rear footpegs.
3. Reinstall the parts in the reverse order of removal.



## XV. Removal and Maintenance of Side Stand and Center Stand

### Side Stand and Center Stand Assemblies and Components

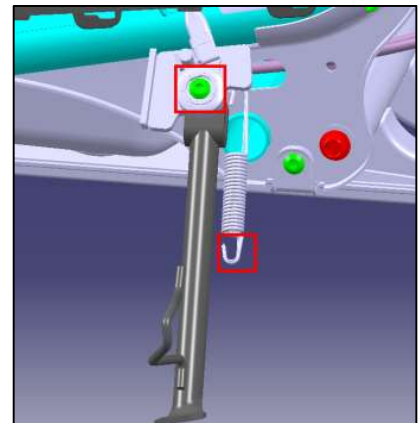


1	Hexagon head shoulder bolt	no.	1
2	Side stand	no.	1
3	Hex nut	no.	1
4	Tension spring	no.	1
5	Cotter pin	no.	1
6	Flat washer	no.	1
7	Flat rubber pad	no.	1
8	Center stand	no.	1
9	Shaft	no.	1
10	Tension spring	no.	1
11	Center stand shock pad	no.	1

### Removing the Side Stand and Center Stand

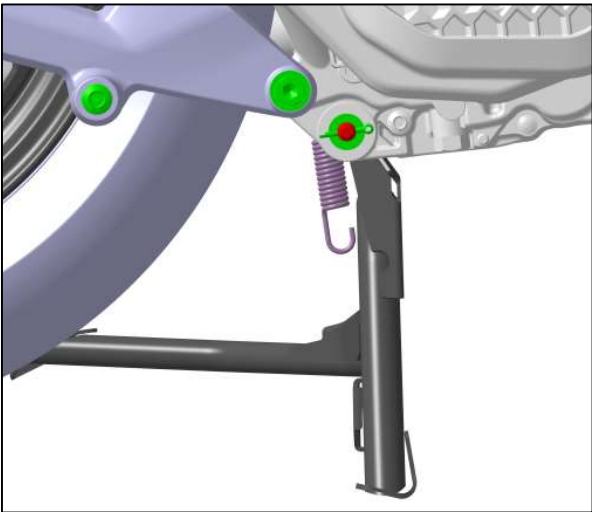
**Remove the side stand as follows:**

1. Place the vehicle upright on its center stand.
2. Remove the left rear footpeg and left guard plate following the steps described in Section IV: Removal and Maintenance of Muffler.
3. Remove the side stand tension spring with a tool.
4. Unscrew the hexagon shoulder bolt and remove the engine kill switch on the side stand.
5. Remove the side stand.
6. Reinstall the parts in the reverse order of removal.



**Remove the center stand as follows:**

1. Keep the whole vehicle in an upright state with professional tooling.
2. Use a tool to remove the center stand tension spring.
3. Remove the cotter pin and pull out the center stand shaft.
4. Remove the center stand.
5. Reinstall the parts in the reverse order of removal.



**IMPORTANT:**

- **When reassembling the side stand and center stand, apply lithium-based grease at the pivot points.**
- **The installation and removal of the center stand and side stand springs require specialized tools to avoid injury.**

Fastener tightening torque values:

Hexagon head shoulder bolt	M10	Nm	40
Engine kill switch on side stand	M6	Nm	9
Lithium grease		g	5